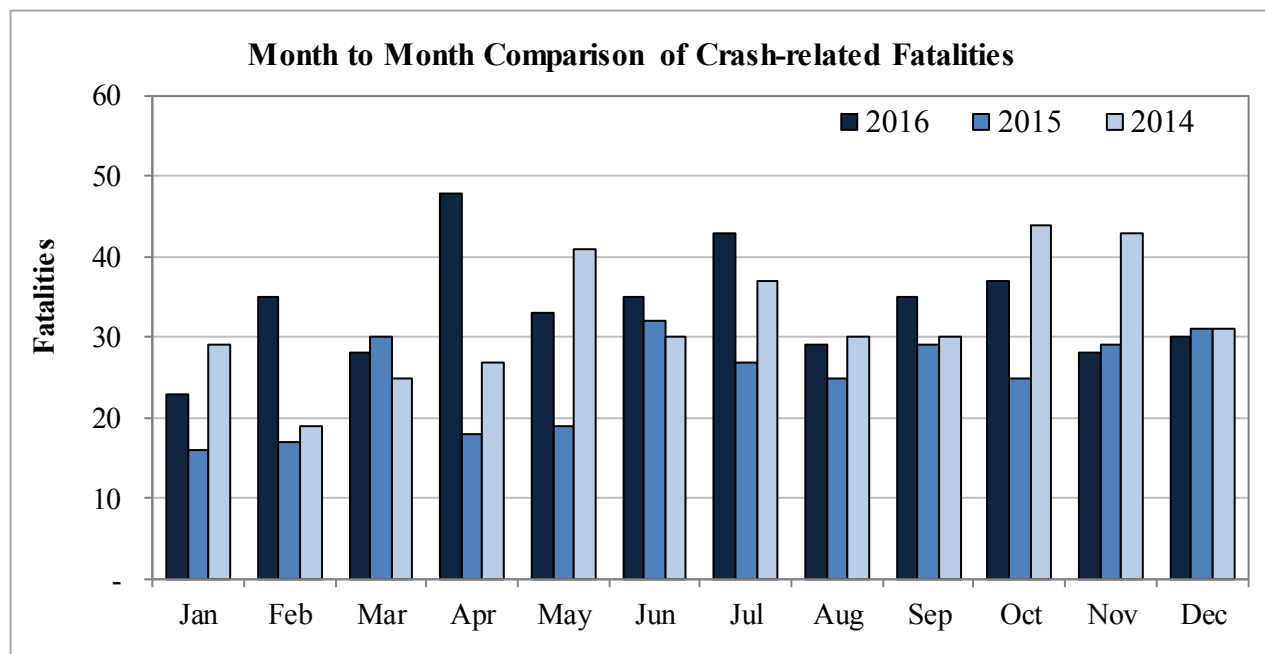


## New Mexico Monthly Traffic Fatality Report, 2016

Produced for the New Mexico Department of Transportation, Traffic Safety Division, Traffic Records Bureau,  
Under Contract No. 5801 by UNM Geospatial and Population Studies, Traffic Research Unit (TRU)

Fatalities by Month 2016, 2015 and 2014			
Month	2016	2015	2014
January	23	16	29
February	35	17	19
March	28	30	25
April	48	18	27
May	33	19	41
June	35	32	30
July	43	27	37
August	29	25	30
September	35	29	30
October	37	25	44
November	28	29	43
December	30	31	31
<b>Total</b>	<b>404</b>	<b>298</b>	<b>386</b>



Fatalities by Vehicle Type, 2016										
Month in 2016	Cars	Pickup Trucks	Semi Trucks	Vans, SUVs, Utility Vehicles	ATV (4W)	Motorcyclists	Pedestrians	Pedalcyclists	Vehicle Type Unknown or Other	Total Fatalities
January	8	3	1	2	-	1	7	1	-	23
February	6	11	-	8	-	2	8	-	-	35
March	10	6	-	6	-	3	3	-	-	28
April	13	9	1	7	-	10	7	1	-	48
May	9	8	-	3	-	8	4	1	-	33
June	10	3	-	9	-	6	7	-	-	35
July	14	5	-	14	-	3	7	-	-	43
August	9	6	1	6	-	2	4	1	-	29
September	5	6	3	10	1	6	4	-	-	35
October	6	7	-	6	1	3	14	-	-	37
November	9	5	-	5	-	2	7	-	-	28
December	13	5	-	6	-	1	5	-	-	30
<b>Total</b>	<b>112</b>	<b>74</b>	<b>6</b>	<b>82</b>	<b>2</b>	<b>47</b>	<b>77</b>	<b>4</b>	<b>-</b>	<b>404</b>

Fatalities by Alcohol Involvement <sup>1</sup> , 2016				
Month in 2016	Alcohol-involved <sup>1</sup>	Not Alcohol-involved	Alcohol Unknown	Total Fatalities
January	11	12	-	23
February	13	22	-	35
March	8	20	-	28
April	22	26	-	48
May	13	20	-	33
June	17	18	-	35
July	19	24	-	43
August	9	20	-	29
September	13	22	-	35
October	19	18	-	37
November	14	14	-	28
December	15	15	-	30
<b>Total</b>	<b>173</b>	<b>231</b>	<b>-</b>	<b>404</b>

<sup>1</sup> All fatalities in alcohol-involved crashes.

Alcohol-involved <sup>1</sup> Fatalities			
Month	2016	2015	2014
January	11	13	10
February	13	5	8
March	8	11	13
April	22	9	10
May	13	5	17
June	17	12	13
July	19	14	23
August	9	12	8
September	13	11	16
October	19	8	22
November	14	15	19
December	15	5	11
<b>Total</b>	<b>173</b>	<b>120</b>	<b>170</b>

<sup>1</sup> All fatalities in alcohol-involved crashes.

Fatalities Under 21, 2016	
Age	Fatalities
1	3
2	3
3	3
4	1
5	1
6	1
7	-
8	1
9	-
10	1
11	-
12	5
13	1
14	-
15	4
16	2
17	6
18	9
19	13
20	5
<b>Total</b>	<b>59</b>

Month in 2016	Total Fatalities	Alcohol-involved <sup>1</sup> Fatalities, 2016			
		Motorcyclist Fatalities	Percent Motorcyclist Fatalities	Pedestrian Fatalities	Percent Pedestrian Fatalities
January	23	-	0.0%	5	21.7%
February	35	1	2.9%	5	14.3%
March	28	-	0.0%	1	3.6%
April	48	1	2.1%	6	12.5%
May	33	4	12.1%	3	9.1%
June	35	1	2.9%	7	20.0%
July	43	1	2.3%	7	16.3%
August	29	1	3.4%	2	6.9%
September	35	3	8.6%	3	8.6%
October	37	1	2.7%	9	24.3%
November	28	1	3.6%	4	14.3%
December	30	-	0.0%	2	6.7%
<b>Total</b>	<b>404</b>	<b>14</b>	<b>3.5%</b>	<b>54</b>	<b>13.4%</b>

<sup>1</sup> All fatalities in alcohol-involved crashes.

Alcohol-involved <sup>1</sup> Fatalities, 2016		
Alcohol-involved	173	42.8%
Not Alcohol-involved	231	57.2%
Alcohol Unknown	0	0.0%
<b>Total</b>	<b>404</b>	<b>100%</b>

<sup>1</sup> All fatalities in alcohol-involved crashes.

Motorcyclist/4W Helmet Usage, 2016	
Helmet Usage	Fatalities
Yes	25
No	24
Unknown	-
<b>Total</b>	<b>49</b>

Fatalities by Vehicle <sup>1</sup> Occupant Seat Belt Usage, 2016				
Restraint	Yes	No	Unknown	Total
Seat Belt	123	145	-	268

<sup>1</sup> Total vehicle occupant fatalities. Excludes motorcyclist, 4W/ATV, semi truck, pedestrian and pedalcyclist fatalities.

Senior (65+) Fatalities,	
Year	Fatalities
2016	60
2015	37
2014	37

Fatalities by Residency and Location, 2016				
Location	New Mexico Resident	Non-Resident	Unknown Residency	Total
Rural	159	66	1	226
Urban	163	15	-	178
Unknown	-	-	-	-
<b>Total</b>	<b>322</b>	<b>81</b>	<b>1</b>	<b>404</b>

Month to Month Comparison of Fatalities by Alcohol Involvement, 2016, 2015 and 2014												
Month	2016 Fatalities				2015 Fatalities				2014 Fatalities			
	Alcohol-involved <sup>1</sup>			Total	Alcohol-involved <sup>1</sup>			Total	Alcohol-involved <sup>1</sup>			Total
	Yes	No	Unk		Yes	No	Unk		Yes	No	Unk	
January	11	12	-	23	13	3	-	16	10	19	-	29
February	13	22	-	35	5	12	-	17	8	11	-	19
March	8	20	-	28	11	19	-	30	13	12	-	25
April	22	26	-	48	9	9	-	18	10	17	-	27
May	13	20	-	33	5	14	-	19	17	24	-	41
June	17	18	-	35	12	20	-	32	13	17	-	30
July	19	24	-	43	14	13	-	27	23	14	-	37
August	9	20	-	29	12	13	-	25	8	22	-	30
September	13	22	-	35	11	18	-	29	16	14	-	30
October	19	18	-	37	8	17	-	25	22	22	-	44
November	14	14	-	28	15	14	-	29	19	24	-	43
December	15	15	-	30	5	26	-	31	11	20	-	31
<b>Total</b>	<b>173</b>	<b>231</b>	<b>-</b>	<b>404</b>	<b>120</b>	<b>178</b>	<b>-</b>	<b>298</b>	<b>170</b>	<b>216</b>	<b>-</b>	<b>386</b>

<sup>1</sup> Identifies whether the fatality resulted from an alcohol-involved crash.

Month to Month Comparison of Fatalities by Seat Belt Usage, 2016, 2015 and 2014												
Month	2016 Fatalities				2015 Fatalities				2014 Fatalities			
	Seat Belt <sup>1</sup>			Total <sup>2</sup>	Seat Belt <sup>1</sup>			Total <sup>2</sup>	Seat Belt <sup>1</sup>			Total <sup>2</sup>
	Yes	No	Unk		Yes	No	Unk		Yes	No	Unk	
January	8	5	-	13	3	6	-	9	8	10	-	18
February	4	21	-	25	2	7	-	9	6	9	-	15
March	12	10	-	22	9	8	-	17	4	13	-	17
April	15	14	-	29	6	9	-	15	2	13	-	15
May	7	13	-	20	3	9	-	12	8	17	-	25
June	10	12	-	22	7	14	-	21	4	10	-	14
July	15	18	-	33	6	11	-	17	10	12	-	22
August	13	8	-	21	4	7	-	11	6	8	-	14
September	14	7	-	21	6	10	-	16	6	10	-	16
October	5	14	-	19	4	9	-	13	14	20	-	34
November	8	11	-	19	4	15	1	20	7	19	-	26
December	12	12	-	24	15	10	-	25	8	10	1	19
<b>Total</b>	<b>123</b>	<b>145</b>	<b>-</b>	<b>268</b>	<b>69</b>	<b>115</b>	<b>1</b>	<b>185</b>	<b>83</b>	<b>151</b>	<b>1</b>	<b>235</b>

<sup>1</sup> Identifies whether a vehicle occupant was belted (Yes), unbelted (No), or belt usage was not reported (Unk).

<sup>2</sup> Total vehicle occupant fatalities. Excludes motorcyclist, 4W/ATV, semi truck, pedestrian and pedalcyclist fatalities.

Fatalities by County and Month, 2016														
County	Jan.	Feb.	Mar.	Apr.	May	Jun.	Jul.	Aug.	Sep.	Oct.	Nov.	Dec.	2016 Total	2015 Total
Bernalillo	11	10	3	11	9	8	8	8	5	13	9	5	100	64
Catron	-	-	-	-	-	-	-	-	-	-	-	-	-	-
Chaves	-	3	3	-	-	2	1	-	3	-	1	1	14	13
Cibola	1	-	1	1	2	1	3	1	4	3	-	-	17	11
Colfax	-	-	-	-	1	1	1	-	2	-	-	-	5	4
Curry	-	-	1	1	-	1	1	-	-	-	2	1	7	2
De Baca	-	-	1	-	-	1	1	1	-	1	-	-	5	3
Doña Ana	1	3	2	5	1	3	-	1	4	-	2	2	24	18
Eddy	-	1	-	2	3	-	-	-	1	-	-	-	7	10
Grant	-	2	1	-	-	-	-	-	-	-	-	-	3	3
Guadalupe	1	1	-	1	1	-	4	1	1	1	-	1	12	8
Harding	-	-	2	-	-	-	-	-	-	-	-	-	2	-
Hidalgo	-	1	-	-	-	-	-	-	-	2	-	-	3	3
Lea	-	1	-	5	-	1	-	-	2	1	1	2	13	13
Lincoln	-	1	-	-	3	-	1	-	1	1	-	-	7	1
Los Alamos	-	-	-	-	-	-	-	-	-	-	-	-	-	-
Luna	3	-	-	1	3	2	1	-	-	2	-	-	12	6
McKinley	1	3	1	-	-	2	3	4	-	2	1	5	22	23
Mora	-	1	1	-	-	-	2	-	-	-	-	-	4	2
Otero	-	-	-	-	1	-	-	-	-	1	1	-	3	10
Quay	-	-	2	-	-	-	-	-	-	-	2	-	4	11
Rio Arriba	1	-	-	1	1	1	2	1	2	1	-	1	11	12
Roosevelt	-	-	1	-	-	-	-	1	1	1	-	1	5	5
San Juan	1	1	6	2	2	3	4	1	3	5	1	2	31	31
San Miguel	2	-	1	-	1	1	-	-	1	-	1	-	7	4
Sandoval	-	-	1	2	3	3	-	3	1	1	2	-	16	5
Santa Fe	-	1	-	1	1	1	5	3	3	1	1	5	22	14
Sierra	-	-	-	2	-	-	1	-	-	-	-	-	3	3
Socorro	-	4	-	5	-	3	1	1	-	-	-	2	16	4
Taos	-	-	-	2	-	-	2	2	-	1	1	-	8	2
Torrance	-	1	1	5	1	1	1	-	1	-	1	1	13	8
Union	-	-	-	-	-	-	1	-	-	-	-	-	1	-
Valencia	1	1	-	1	-	-	-	1	-	-	2	1	7	5
<b>Total</b>	<b>23</b>	<b>35</b>	<b>28</b>	<b>48</b>	<b>33</b>	<b>35</b>	<b>43</b>	<b>29</b>	<b>35</b>	<b>37</b>	<b>28</b>	<b>30</b>	<b>404</b>	<b>298</b>

Fatalities by County Relating to Alcohol, Belt Use, and Under 21 BAC, 2016							
County	Alcohol-involved Fatalities <sup>1</sup>		Unbelted Fatalities		Under 21 (15-20) with a BAC <sup>2</sup>		Total Fatalities
	Count	Percent <sup>3</sup>	Count	Percent <sup>3</sup>	Count	Percent <sup>3</sup>	
Bernalillo	52	52.0%	29	29.0%	3	3.0%	100
Catron	-	-	-	-	-	-	-
Chaves	4	28.6%	7	50.0%	-	0.0%	14
Cibola	5	29.4%	9	52.9%	1	5.9%	17
Colfax	-	0.0%	1	20.0%	-	0.0%	5
Curry	3	42.9%	1	14.3%	-	0.0%	7
De Baca	3	60.0%	3	60.0%	1	20.0%	5
Doña Ana	10	41.7%	12	50.0%	1	4.2%	24
Eddy	1	14.3%	1	14.3%	-	0.0%	7
Grant	3	100.0%	1	33.3%	-	0.0%	3
Guadalupe	2	16.7%	2	16.7%	-	0.0%	12
Harding	-	0.0%	-	0.0%	-	0.0%	2
Hidalgo	-	0.0%	2	66.7%	-	0.0%	3
Lea	5	38.5%	5	38.5%	1	7.7%	13
Lincoln	-	0.0%	4	57.1%	-	0.0%	7
Los Alamos	-	-	-	-	-	-	-
Luna	5	41.7%	3	25.0%	-	0.0%	12
McKinley	12	54.5%	11	50.0%	-	0.0%	22
Mora	1	25.0%	3	75.0%	-	0.0%	4
Otero	1	33.3%	2	66.7%	-	0.0%	3
Quay	2	50.0%	2	50.0%	-	0.0%	4
Rio Arriba	9	81.8%	-	0.0%	1	9.1%	11
Roosevelt	1	20.0%	2	40.0%	-	0.0%	5
San Juan	21	67.7%	9	29.0%	-	0.0%	31
San Miguel	4	57.1%	2	28.6%	-	0.0%	7
Sandoval	8	50.0%	5	31.3%	-	0.0%	16
Santa Fe	9	40.9%	10	45.5%	-	0.0%	22
Sierra	-	0.0%	-	0.0%	-	0.0%	3
Socorro	2	12.5%	6	37.5%	-	0.0%	16
Taos	5	62.5%	5	62.5%	-	0.0%	8
Torrance	5	38.5%	5	38.5%	-	0.0%	13
Union	-	0.0%	1	100.0%	-	0.0%	1
Valencia	-	0.0%	2	28.6%	-	0.0%	7
<b>Total</b>	<b>173</b>	<b>42.8%</b>	<b>145</b>	<b>35.9%</b>	<b>8</b>	<b>2.0%</b>	<b>404</b>

<sup>1</sup> All fatalities in alcohol-involved crashes.

<sup>2</sup> Fatalities under 21 with a reported BAC (Blood Alcohol Content) above zero.

<sup>3</sup> Percentage based on total fatalities in the county.

Fatalities by Maintenance District and Month, 2016													
District	Jan.	Feb.	Mar.	Apr.	May	Jun.	Jul.	Aug.	Sep.	Oct.	Nov.	Dec.	Total
District 1	4	10	3	13	4	8	3	2	4	4	2	4	61
District 2	-	6	6	8	7	5	4	2	8	5	5	5	61
District 3	12	11	4	12	9	11	8	10	6	13	13	6	115
District 4	3	2	6	1	3	2	8	1	4	1	3	1	35
District 5	2	3	7	11	5	6	14	7	9	8	4	9	85
District 6	2	3	2	3	5	3	6	7	4	6	1	5	47
<b>Total</b>	<b>23</b>	<b>35</b>	<b>28</b>	<b>48</b>	<b>33</b>	<b>35</b>	<b>43</b>	<b>29</b>	<b>35</b>	<b>37</b>	<b>28</b>	<b>30</b>	<b>404</b>

Fatalities by Maintenance District Relating to Alcohol, Belt Use, and Under 21 BAC, 2016							
District	Alcohol-involved Fatalities <sup>1</sup>		Unbelted Fatalities		Under 21 (15-20) Fatalities with a BAC <sup>2</sup>		Total Fatalities
	Count	Percent <sup>3</sup>	Count	Percent <sup>3</sup>	Count	Percent <sup>3</sup>	
District 1	20	32.8%	24	39.3%	1	1.6%	61
District 2	18	29.5%	25	41.0%	2	3.3%	61
District 3	57	49.6%	33	28.7%	3	2.6%	115
District 4	9	25.7%	11	31.4%	-	0.0%	35
District 5	49	57.6%	29	34.1%	1	1.2%	85
District 6	20	42.6%	23	48.9%	1	2.1%	47
<b>Total</b>	<b>173</b>	<b>42.8%</b>	<b>145</b>	<b>35.9%</b>	<b>8</b>	<b>2.0%</b>	<b>404</b>

<sup>1</sup> All fatalities in alcohol-involved crashes.

<sup>2</sup> Fatalities under 21 with a reported BAC (Blood Alcohol Content) above zero.

<sup>3</sup> Percentage based on total fatalities in the district