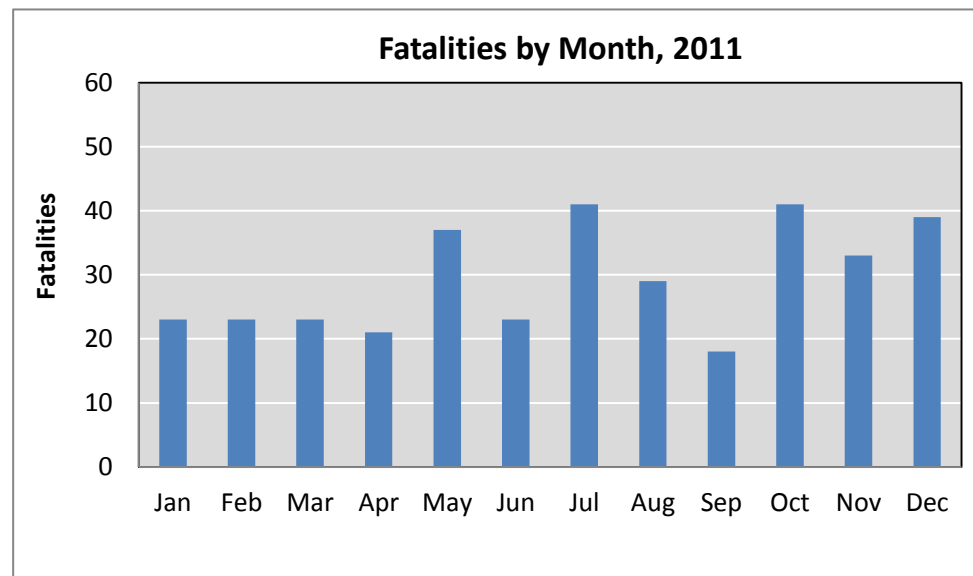
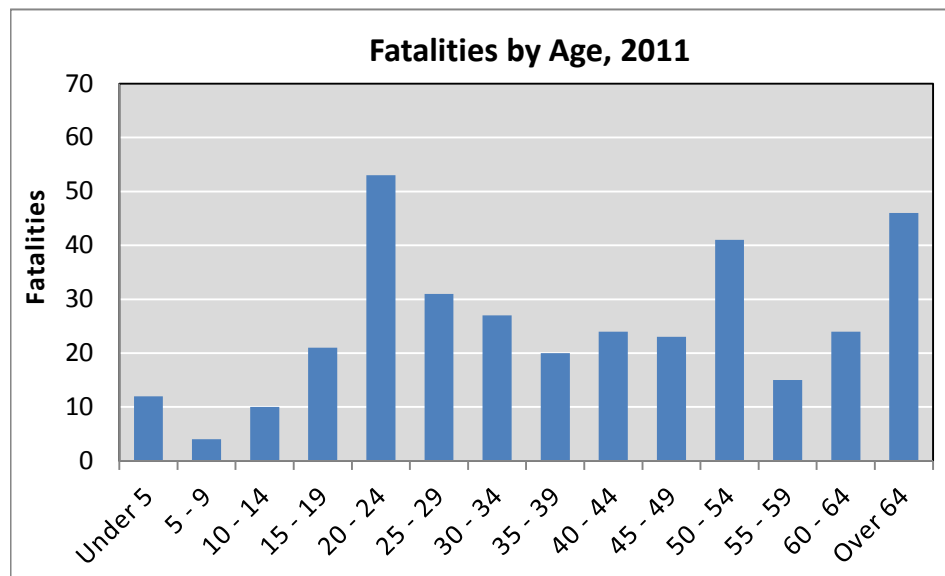


## 2011\* New Mexico Fatalities by Age and Month

Produced for the New Mexico DOT - Traffic Safety Division

Under Contract C05407/1 by the Division of Government Research, University of New Mexico

Month	Age														Total
	Under 5	5 - 9	10 - 14	15 - 19	20 - 24	25 - 29	30 - 34	35 - 39	40 - 44	45 - 49	50 - 54	55 - 59	60 - 64	Over 64	
Jan	2	0	1	2	3	2	5	0	1	2	0	1	2	2	<b>23</b>
Feb	1	0	2	2	4	0	1	0	2	3	3	2	1	2	<b>23</b>
Mar	0	0	1	3	3	3	1	0	1	0	4	1	2	4	<b>23</b>
Apr	0	0	1	2	2	2	0	0	0	0	4	1	2	7	<b>21</b>
May	0	1	0	2	2	5	0	7	5	1	9	3	1	1	<b>37</b>
Jun	3	0	0	3	5	1	2	1	2	0	1	1	1	3	<b>23</b>
Jul	0	1	1	1	5	3	3	4	2	4	5	1	4	7	<b>41</b>
Aug	0	0	1	0	4	3	3	2	2	3	1	1	3	6	<b>29</b>
Sep	0	0	0	2	5	1	2	2	2	0	2	1	0	1	<b>18</b>
Oct	0	1	1	4	4	7	2	2	4	4	4	1	3	4	<b>41</b>
Nov	2	0	1	0	9	3	2	1	3	2	4	2	1	3	<b>33</b>
Dec	4	1	1	0	7	1	6	1	0	4	4	0	4	6	<b>39</b>
<b>Total</b>	<b>12</b>	<b>4</b>	<b>10</b>	<b>21</b>	<b>53</b>	<b>31</b>	<b>27</b>	<b>20</b>	<b>24</b>	<b>23</b>	<b>41</b>	<b>15</b>	<b>24</b>	<b>46</b>	<b>351</b>



\*Preliminary analysis subject to change and review. Source: NMDOT crash data as of 7/6/2012, excluding fatalities with unknown age.

[http://www.dgr.unm.edu/index\\_tsb.html](http://www.dgr.unm.edu/index_tsb.html)