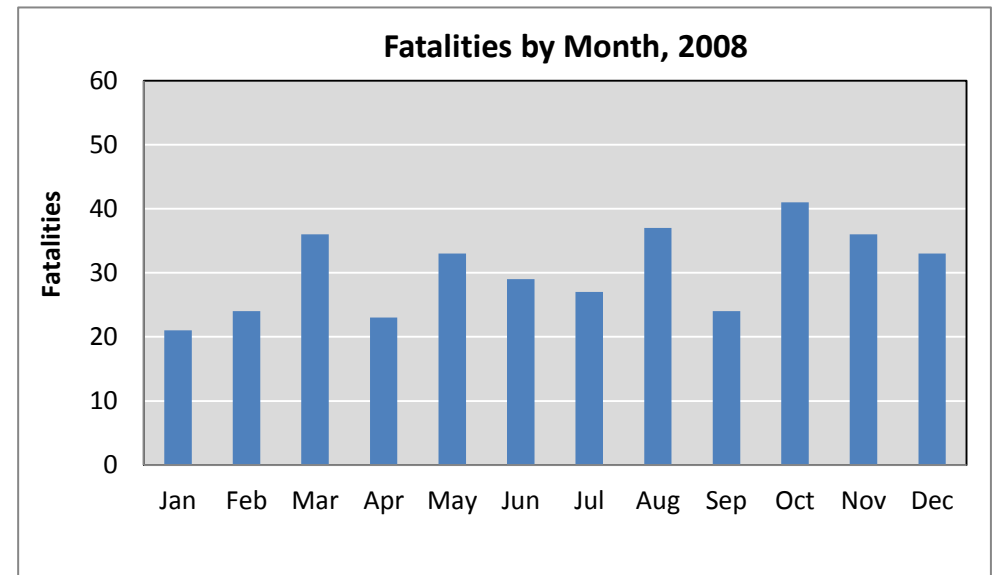
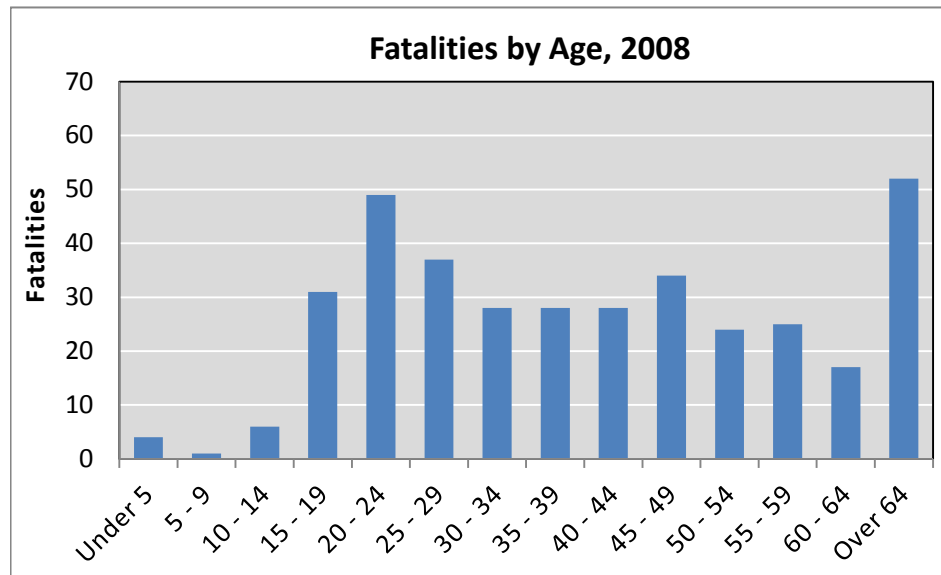


2008 New Mexico Fatalities by Age and Month

Produced for the New Mexico DOT - Traffic Safety Division

Under Contract C05407/1 by the Division of Government Research, University of New Mexico

Month	Age														Total
	Under 5	5 - 9	10 - 14	15 - 19	20 - 24	25 - 29	30 - 34	35 - 39	40 - 44	45 - 49	50 - 54	55 - 59	60 - 64	Over 64	
Jan	0	0	1	1	5	0	2	3	4	1	2	0	1	1	21
Feb	0	0	1	4	1	2	0	3	3	1	1	0	1	7	24
Mar	0	0	0	4	4	4	3	3	3	3	2	3	1	6	36
Apr	0	0	0	3	4	2	0	0	0	5	2	2	1	4	23
May	0	0	1	2	6	2	4	2	3	3	5	1	1	3	33
Jun	0	0	0	3	3	4	2	1	3	3	2	1	2	5	29
Jul	1	0	0	2	6	5	2	1	2	2	0	3	0	3	27
Aug	0	0	0	3	7	5	5	3	3	1	1	2	4	3	37
Sep	1	0	0	1	4	3	0	2	1	2	2	2	5	1	24
Oct	0	0	2	5	4	2	3	3	3	3	3	3	1	9	41
Nov	2	0	1	1	2	5	4	6	1	2	2	4	0	6	36
Dec	0	1	0	2	3	3	3	1	2	8	2	4	0	4	33
Total	4	1	6	31	49	37	28	28	28	34	24	25	17	52	364



Source: NMDOT crash data as of 7/6/2012, excluding fatalities with unknown age.

http://www.dgr.unm.edu/index_tsb.html