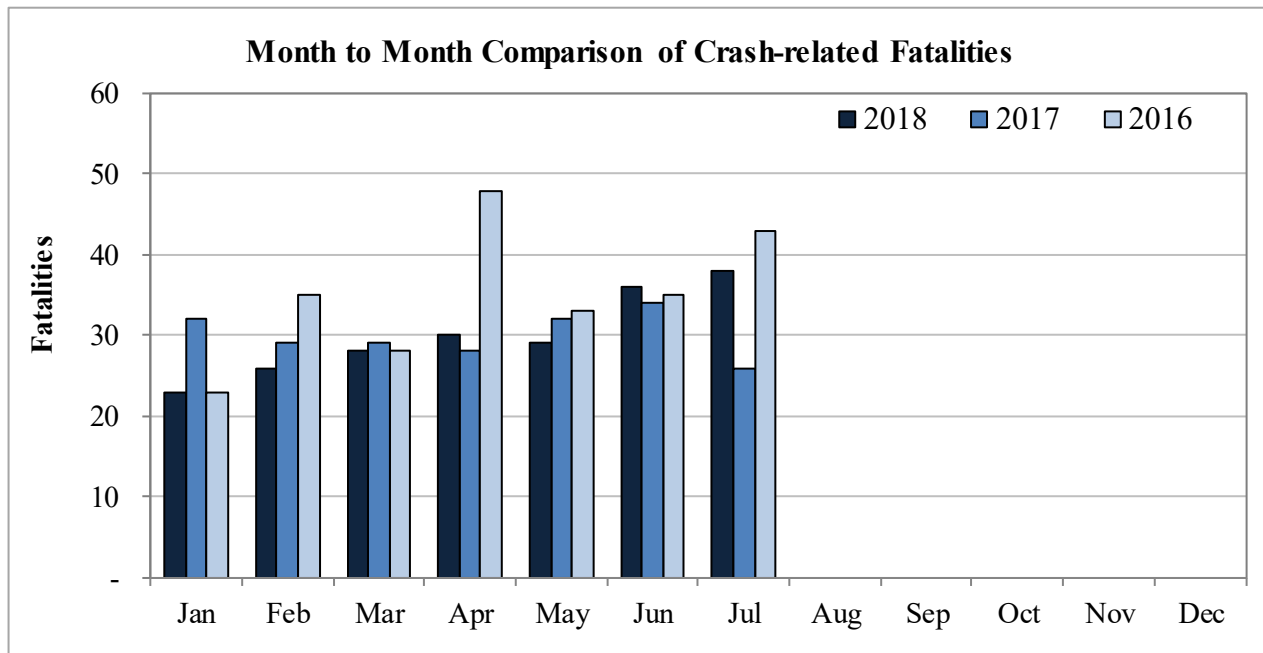


New Mexico Monthly Traffic Fatality Report, 2018

Produced for the New Mexico Department of Transportation, Traffic Safety Division, Traffic Records Bureau,
Under Contract No. 5801 by UNM Geospatial and Population Studies, Traffic Research Unit (TRU)

Fatalities by Month 2018, 2017, and 2016 Year to Date			
Month	2018	2017	2016
January	23	32	23
February	26	29	35
March	28	29	28
April	30	28	48
May	29	32	33
June	36	34	35
July	38	26	43
August	-	-	-
September	-	-	-
October	-	-	-
November	-	-	-
December	-	-	-
Total	210	210	245



Fatalities by Vehicle Type, 2018 to Date										
Month in 2018	Cars	Pickup Trucks	Semi Trucks	Vans, SUVs, Utility Vehicles	ATV (4W)	Motorcyclists	Pedestrians	Pedalcyclists	Vehicle Type Unknown or Other	Total Fatalities
January	9	5	-	3	-	1	5	-	-	23
February	10	4	-	4	-	-	8	-	-	26
March	7	5	1	1	-	5	9	-	-	28
April	7	7	-	3	-	6	7	-	-	30
May	6	3	-	7	-	6	7	-	-	29
June	9	7	1	8	-	2	7	2	-	36
July	10	8	-	3	-	7	7	2	1	38
August	-	-	-	-	-	-	-	-	-	-
September	-	-	-	-	-	-	-	-	-	-
October	-	-	-	-	-	-	-	-	-	-
November	-	-	-	-	-	-	-	-	-	-
December	-	-	-	-	-	-	-	-	-	-
Total	58	39	2	29	-	27	50	4	1	210

Fatalities by Alcohol Involvement ¹ , 2018 to Date				
Month in 2018	Alcohol-involved ¹	Not Alcohol-involved	Alcohol Unknown	Total Fatalities
January	9	14	-	23
February	7	19	-	26
March	7	21	-	28
April	15	15	-	30
May	8	21	-	29
June	5	31	-	36
July	6	32	-	38
August	-	-	-	-
September	-	-	-	-
October	-	-	-	-
November	-	-	-	-
December	-	-	-	-
Total	57	153	-	210

¹ All fatalities in alcohol-involved crashes.

Alcohol-involved ¹ Fatalities, Year to Date			
Month	2018	2017	2016
January	9	15	11
February	7	14	13
March	7	12	8
April	15	15	20
May	8	13	13
June	5	7	17
July	6	9	19
August	-	-	-
September	-	-	-
October	-	-	-
November	-	-	-
December	-	-	-
Total	57	85	101

¹ All fatalities in alcohol-involved crashes.

Fatalities Under 21, 2018 to Date	
Age	Fatalities
1	-
2	-
3	-
4	-
5	1
6	2
7	-
8	-
9	1
10	2
11	-
12	2
13	-
14	-
15	1
16	3
17	3
18	-
19	1
20	5
Total	21

Month in 2018	Total Fatalities, 2018 to Date	Alcohol-involved ¹ Fatalities, 2018 to Date			
		Motorcyclist Fatalities	Percent Motorcyclist Fatalities	Pedestrian Fatalities	Percent Pedestrian Fatalities
January	23	-	0.0%	3	13.0%
February	26	-	0.0%	-	0.0%
March	28	1	3.6%	3	10.7%
April	30	2	6.7%	4	13.3%
May	29	1	3.4%	1	3.4%
June	36	-	0.0%	1	2.8%
July	38	-	0.0%	2	5.3%
August	-	-	-	-	-
September	-	-	-	-	-
October	-	-	-	-	-
November	-	-	-	-	-
December	-	-	-	-	-
Total	210	4	1.9%	14	6.7%

¹ All fatalities in alcohol-involved crashes.

Alcohol-involved ¹ Fatalities, 2018 to Date		
Alcohol-involved	57	27.1%
Not Alcohol-involved	153	72.9%
Alcohol Unknown	0	0.0%
Total	210	100%

¹ All fatalities in alcohol-involved crashes.

Motorcyclist/4W Helmet Usage, 2018 to Date	
Helmet Usage	Fatalities
Yes	9
No	15
Unknown	3
Total	27

Fatalities by Vehicle ¹ Occupant Seat Belt Usage, 2018 to Date				
Restraint	Yes	No	Unknown	Total
Seat Belt	44	77	2	123

¹ Total vehicle occupant fatalities. Excludes motorcyclist, 4W/ATV, semi truck, pedestrian and pedalcyclist fatalities.

Senior (65+) Fatalities, Year to Date	
Year	Fatalities
2018	33
2017	30
2016	33

Fatalities by Residency and Location, 2018 to Date				
Location	New Mexico Resident	Non-Resident	Unknown Residency	Total
Rural	83	25	-	108
Urban	89	13	-	102
Unknown	-	-	-	-
Total	172	38	-	210

Month to Month Comparison of Fatalities by Alcohol Involvement, Year to Date												
Month	2018 Fatalities				2017 Fatalities				2016 Fatalities			
	Alcohol-involved ¹			Total	Alcohol-involved ¹			Total	Alcohol-involved ¹			Total
	Yes	No	Unk		Yes	No	Unk		Yes	No	Unk	
January	9	14	-	23	15	17	-	32	11	12	-	23
February	7	19	-	26	14	15	-	29	13	22	-	35
March	7	21	-	28	12	17	-	29	8	20	-	28
April	15	15	-	30	15	13	-	28	20	28	-	48
May	8	21	-	29	13	19	-	32	13	20	-	33
June	5	31	-	36	7	27	-	34	17	18	-	35
July	6	32	-	38	9	17	-	26	19	24	-	43
August	-	-	-	-	-	-	-	-	-	-	-	-
September	-	-	-	-	-	-	-	-	-	-	-	-
October	-	-	-	-	-	-	-	-	-	-	-	-
November	-	-	-	-	-	-	-	-	-	-	-	-
December	-	-	-	-	-	-	-	-	-	-	-	-
Total	57	153	-	210	85	125	-	210	101	144	-	245

¹ Identifies whether the fatality resulted from an alcohol-involved crash.

Month to Month Comparison of Fatalities by Seat Belt Usage, Year to Date												
Month	2018 Fatalities				2017 Fatalities				2016 Fatalities			
	Seat Belt ¹			Total ²	Seat Belt ¹			Total ²	Seat Belt ¹			Total ²
	Yes	No	Unk		Yes	No	Unk		Yes	No	Unk	
January	6	11	-	17	8	14	-	22	8	5	-	13
February	5	13	-	18	7	8	-	15	4	21	1	26
March	7	6	-	13	12	9	-	21	11	11	-	22
April	5	12	-	17	8	9	-	17	14	14	-	28
May	5	11	-	16	12	15	-	27	7	13	-	20
June	10	12	2	24	11	10	-	21	9	13	-	22
July	6	12	-	18	5	8	1	14	14	19	-	33
August	-	-	-	-	-	-	-	-	-	-	-	-
September	-	-	-	-	-	-	-	-	-	-	-	-
October	-	-	-	-	-	-	-	-	-	-	-	-
November	-	-	-	-	-	-	-	-	-	-	-	-
December	-	-	-	-	-	-	-	-	-	-	-	-
Total	44	77	2	123	63	73	1	137	67	96	1	164

¹ Identifies whether a vehicle occupant was belted (Yes), unbelted (No), or belt usage was not reported (Unk).

² Total vehicle occupant fatalities. Excludes motorcyclist, 4W/ATV, semi truck, pedestrian and pedalcyclist fatalities.

Fatalities by County and Month, 2018 to Date														
County	Jan.	Feb.	Mar.	Apr.	May	Jun.	Jul.	Aug.	Sep.	Oct.	Nov.	Dec.	2018 Total, to Date	2017 Total, to Date
Bernalillo	4	6	9	4	6	12	17	-	-	-	-	-	58	47
Catron	1	-	-	-	1	-	2	-	-	-	-	-	4	1
Chaves	-	-	-	2	2	1	-	-	-	-	-	-	5	3
Cibola	-	-	-	2	-	1	-	-	-	-	-	-	3	7
Colfax	-	-	1	-	-	2	-	-	-	-	-	-	3	4
Curry	-	1	2	-	-	-	-	-	-	-	-	-	3	1
De Baca	-	-	-	-	-	-	-	-	-	-	-	-	-	-
Doña Ana	1	1	2	-	2	-	2	-	-	-	-	-	8	15
Eddy	1	2	1	1	2	1	-	-	-	-	-	-	8	11
Grant	-	-	-	-	-	-	-	-	-	-	-	-	-	3
Guadalupe	-	-	-	-	-	-	-	-	-	-	-	-	-	4
Harding	-	-	-	-	-	-	-	-	-	-	-	-	-	-
Hidalgo	-	-	-	-	-	-	1	-	-	-	-	-	1	10
Lea	5	-	3	4	1	2	3	-	-	-	-	-	18	11
Lincoln	-	-	-	-	-	-	1	-	-	-	-	-	1	4
Los Alamos	-	-	-	-	-	-	-	-	-	-	-	-	-	-
Luna	1	-	-	-	-	-	-	-	-	-	-	-	1	2
McKinley	1	2	3	6	2	5	4	-	-	-	-	-	23	16
Mora	-	-	-	-	-	-	-	-	-	-	-	-	-	2
Otero	-	2	-	1	1	1	-	-	-	-	-	-	5	4
Quay	-	-	-	-	-	-	-	-	-	-	-	-	-	1
Rio Arriba	1	-	1	1	1	4	2	-	-	-	-	-	10	4
Roosevelt	-	-	1	-	-	-	-	-	-	-	-	-	1	4
San Juan	3	4	-	2	5	-	1	-	-	-	-	-	15	15
San Miguel	3	-	1	-	1	1	-	-	-	-	-	-	6	2
Sandoval	1	2	3	2	1	1	-	-	-	-	-	-	10	12
Santa Fe	1	2	1	3	1	2	2	-	-	-	-	-	12	12
Sierra	-	-	-	1	-	-	-	-	-	-	-	-	1	3
Socorro	-	-	-	-	1	-	-	-	-	-	-	-	1	-
Taos	-	1	-	-	1	1	-	-	-	-	-	-	3	3
Torrance	-	2	-	-	-	-	2	-	-	-	-	-	4	4
Union	-	-	-	-	-	-	-	-	-	-	-	-	-	-
Valencia	-	1	-	1	1	2	1	-	-	-	-	-	6	5
Total	23	26	28	30	29	36	38	-	-	-	-	-	210	210

Fatalities by County Relating to Alcohol, Belt Use, and Under 21 BAC, 2018 to Date							
County	Alcohol-involved Fatalities ¹		Unbelted Fatalities		Under 21 (15-20) with a BAC ²		Total Fatalities
	Count	Percent ³	Count	Percent ³	Count	Percent ³	
Bernalillo	7	12.1%	6	10.3%	-	0.0%	58
Catron	1	25.0%	3	75.0%	-	0.0%	4
Chaves	2	40.0%	3	60.0%	-	0.0%	5
Cibola	2	66.7%	2	66.7%	-	0.0%	3
Colfax	1	33.3%	1	33.3%	-	0.0%	3
Curry	-	0.0%	1	33.3%	-	0.0%	3
De Baca	-	-	-	-	-	-	-
Doña Ana	-	0.0%	5	62.5%	-	0.0%	8
Eddy	1	12.5%	1	12.5%	-	0.0%	8
Grant	-	-	-	-	-	-	-
Guadalupe	-	-	-	-	-	-	-
Harding	-	-	-	-	-	-	-
Hidalgo	-	0.0%	-	0.0%	-	0.0%	1
Lea	6	33.3%	7	38.9%	-	0.0%	18
Lincoln	-	0.0%	1	100.0%	-	0.0%	1
Los Alamos	-	-	-	-	-	-	-
Luna	-	0.0%	-	0.0%	-	0.0%	1
McKinley	10	43.5%	11	47.8%	-	0.0%	23
Mora	-	-	-	-	-	-	-
Otero	-	0.0%	2	40.0%	-	0.0%	5
Quay	-	-	-	-	-	-	-
Rio Arriba	1	10.0%	8	80.0%	-	0.0%	10
Roosevelt	1	100.0%	-	0.0%	-	0.0%	1
San Juan	10	66.7%	11	73.3%	-	0.0%	15
San Miguel	1	16.7%	3	50.0%	-	0.0%	6
Sandoval	7	70.0%	5	50.0%	-	0.0%	10
Santa Fe	1	8.3%	2	16.7%	-	0.0%	12
Sierra	1	100.0%	-	0.0%	-	0.0%	1
Socorro	-	0.0%	-	0.0%	-	0.0%	1
Taos	2	66.7%	1	33.3%	-	0.0%	3
Torrance	-	0.0%	2	50.0%	-	0.0%	4
Union	-	-	-	-	-	-	-
Valencia	3	50.0%	2	33.3%	-	0.0%	6
Total	57	27.1%	77	36.7%	-	0.0%	210

¹ All fatalities in alcohol-involved crashes.

² Fatalities under 21 with a reported BAC (Blood Alcohol Content) above zero.

³ Percentage based on total fatalities in the county.

Fatalities by Maintenance District and Month, 2018 to Date													
District	Jan.	Feb.	Mar.	Apr.	May	Jun.	Jul.	Aug.	Sep.	Oct.	Nov.	Dec.	Total
District 1	2	1	2	1	3	-	3	-	-	-	-	-	12
District 2	6	5	7	8	6	5	4	-	-	-	-	-	41
District 3	5	7	11	7	8	15	18	-	-	-	-	-	71
District 4	3	-	2	-	1	3	-	-	-	-	-	-	9
District 5	5	8	2	6	8	7	7	-	-	-	-	-	43
District 6	2	5	4	8	3	6	6	-	-	-	-	-	34
Total	23	26	28	30	29	36	38	-	-	-	-	-	210

Fatalities by Maintenance District Relating to Alcohol, Belt Use, and Under 21 BAC, 2018 to Date							
District	Alcohol-involved Fatalities ¹		Unbelted Fatalities		Under 21 (15-20) Fatalities with a BAC ²		Total Fatalities
	Count	Percent ³	Count	Percent ³	Count	Percent ³	
District 1	1	8.3%	5	41.7%	-	0.0%	12
District 2	10	24.4%	15	36.6%	-	0.0%	41
District 3	15	21.1%	10	14.1%	-	0.0%	71
District 4	2	22.2%	4	44.4%	-	0.0%	9
District 5	13	30.2%	23	53.5%	-	0.0%	43
District 6	16	47.1%	20	58.8%	-	0.0%	34
Total	57	27.1%	77	36.7%	-	0.0%	210

¹ All fatalities in alcohol-involved crashes.

² Fatalities under 21 with a reported BAC (Blood Alcohol Content) above zero.

³ Percentage based on total fatalities in the district