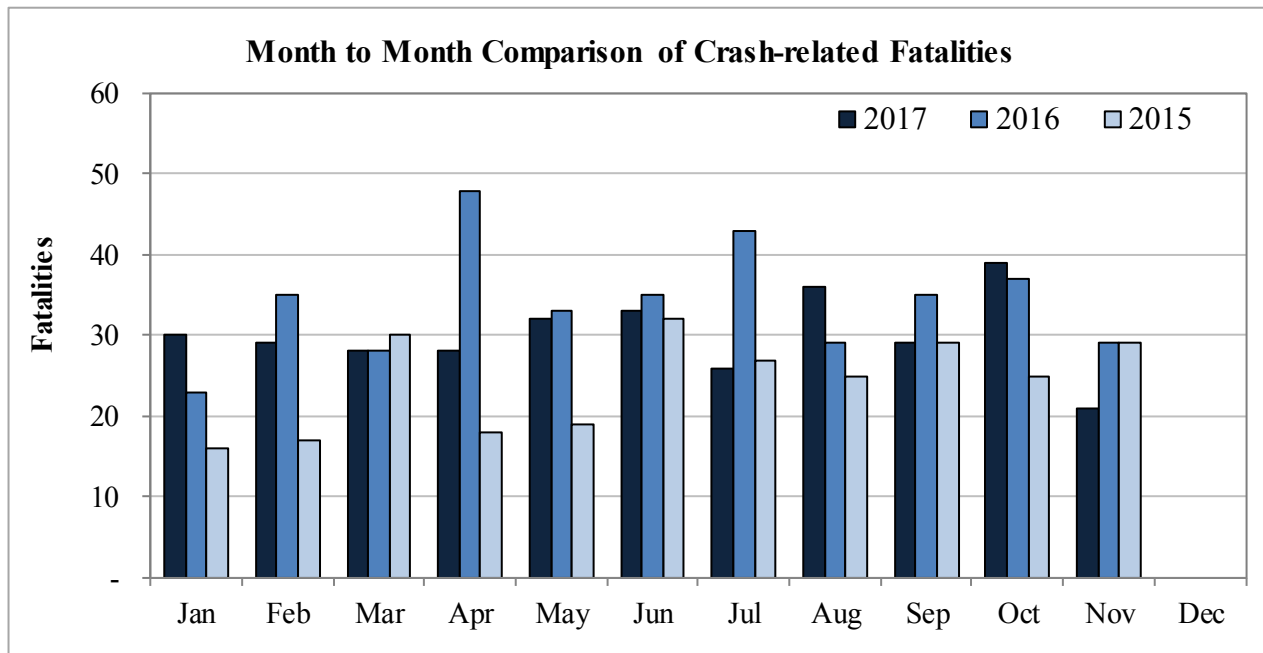


New Mexico Monthly Traffic Fatality Report, 2017

Produced for the New Mexico Department of Transportation, Traffic Safety Division, Traffic Records Bureau,
Under Contract No. 5801 by UNM Geospatial and Population Studies, Traffic Research Unit (TRU)

Fatalities by Month 2017, 2016 and 2015, Year to Date			
Month	2017	2016	2015
January	30	23	16
February	29	35	17
March	28	28	30
April	28	48	18
May	32	33	19
June	33	35	32
July	26	43	27
August	36	29	25
September	29	35	29
October	39	37	25
November	21	29	29
December	-	-	-
Total	331	375	267



Fatalities by Vehicle Type, 2017 to Date										
Month in 2017	Cars	Pickup Trucks	Semi Trucks	Vans, SUVs, Utility Vehicles	ATV (4W)	Motorcyclists	Pedestrians	Pedalcyclists	Vehicle Type Unknown or Other	Total Fatalities
January	10	5	2	5	-	2	6	-	-	30
February	9	2	1	4	-	6	7	-	-	29
March	8	5	-	7	-	6	2	-	-	28
April	7	3	1	7	2	3	5	-	-	28
May	10	6	1	11	-	1	3	-	-	32
June	8	8	2	5	-	2	8	-	-	33
July	4	5	1	5	-	5	6	-	-	26
August	7	4	1	9	-	7	8	-	-	36
September	9	4	-	6	-	7	3	-	-	29
October	10	7	-	4	-	7	11	-	-	39
November	4	5	-	1	1	4	6	-	-	21
December	-	-	-	-	-	-	-	-	-	-
Total	86	54	9	64	3	50	65	-	-	331

Fatalities by Alcohol Involvement ¹ , 2017 to Date				
Month in 2017	Alcohol-involved ¹	Not Alcohol-involved	Alcohol Unknown	Total Fatalities
January	16	14	-	30
February	14	15	-	29
March	11	17	-	28
April	15	13	-	28
May	13	19	-	32
June	6	27	-	33
July	9	17	-	26
August	7	29	-	36
September	8	21	-	29
October	16	23	-	39
November	7	14	-	21
December	-	-	-	-
Total	122	209	-	331

¹ All fatalities in alcohol-involved crashes.

Alcohol-involved ¹ Fatalities, Year to Date			
Month	2017	2016	2015
January	16	11	13
February	14	13	5
March	11	8	11
April	15	20	9
May	13	13	5
June	6	17	12
July	9	19	14
August	7	9	12
September	8	14	11
October	16	19	8
November	7	14	15
December	-	-	-
Total	122	157	115

¹ All fatalities in alcohol-involved crashes.

Fatalities Under 21, 2017 to Date	
Age	Fatalities
1	2
2	1
3	-
4	1
5	-
6	2
7	1
8	1
9	-
10	-
11	-
12	1
13	-
14	4
15	-
16	1
17	2
18	3
19	7
20	10
Total	36

Month in 2017	Total Fatalities, 2017 to Date	Alcohol-involved ¹ Fatalities, 2017 to Date			
		Motorcyclist Fatalities	Percent Motorcyclist Fatalities	Pedestrian Fatalities	Percent Pedestrian Fatalities
January	30	1	3.3%	4	13.3%
February	29	2	6.9%	5	17.2%
March	28	4	14.3%	1	3.6%
April	28	1	3.6%	2	7.1%
May	32	-	0.0%	2	6.3%
June	33	2	6.1%	1	3.0%
July	26	-	0.0%	4	15.4%
August	36	-	0.0%	3	8.3%
September	29	1	3.4%	2	6.9%
October	39	2	5.1%	7	17.9%
November	21	-	0.0%	4	19.0%
December	-	-	-	-	-
Total	331	13	3.9%	35	10.6%

¹ All fatalities in alcohol-involved crashes.

Alcohol-involved ¹ Fatalities, 2017 to Date		
Alcohol-involved	122	36.9%
Not Alcohol-involved	209	63.1%
Alcohol Unknown	-	0.0%
Total	331	100%

¹ All fatalities in alcohol-involved crashes.

Motorcyclist/4W Helmet Usage, 2017 to Date	
Helmet Usage	Fatalities
Yes	16
No	35
Unknown	2
Total	53

Fatalities by Vehicle ¹ Occupant Seat Belt Usage, 2017 to Date				
Restraint	Yes	No	Unknown	Total
Seat Belt	93	107	4	204

¹ Total vehicle occupant fatalities. Excludes motorcyclist, 4W/ATV, semi truck, pedestrian and pedalcyclist fatalities.

Senior (65+) Fatalities, Year to Date	
Year	Fatalities
2017	48
2016	52
2015	33

Fatalities by Residency and Location, 2017 to Date				
Location	New Mexico Resident	Non-Resident	Unknown Residency	Total
Rural	130	54	-	184
Urban	136	11	-	147
Unknown	-	-	-	-
Total	266	65	-	331

Month to Month Comparison of Fatalities by Alcohol Involvement, Year to Date												
Month	2017 Fatalities				2016 Fatalities				2015 Fatalities			
	Alcohol-involved ¹			Total	Alcohol-involved ¹			Total	Alcohol-involved ¹			Total
	Yes	No	Unk		Yes	No	Unk		Yes	No	Unk	
January	16	14	-	30	11	12	-	23	13	3	-	16
February	14	15	-	29	13	22	-	35	5	12	-	17
March	11	17	-	28	8	20	-	28	11	19	-	30
April	15	13	-	28	20	28	-	48	9	9	-	18
May	13	19	-	32	13	20	-	33	5	14	-	19
June	6	27	-	33	17	18	-	35	12	20	-	32
July	9	17	-	26	19	24	-	43	14	13	-	27
August	7	29	-	36	9	20	-	29	12	13	-	25
September	8	21	-	29	14	21	-	35	11	18	-	29
October	16	23	-	39	19	18	-	37	8	17	-	25
November	7	14	-	21	14	15	-	29	15	14	-	29
December	-	-	-	-	-	-	-	-	-	-	-	-
Total	122	209	-	331	157	218	-	375	115	152	-	267

¹ Identifies whether the fatality resulted from an alcohol-involved crash.

Month to Month Comparison of Fatalities by Seat Belt Usage, Year to Date												
Month	2017 Fatalities				2016 Fatalities				2015 Fatalities			
	Seat Belt ¹			Total ²	Seat Belt ¹			Total ²	Seat Belt ¹			Total ²
	Yes	No	Unk		Yes	No	Unk		Yes	No	Unk	
January	8	12	-	20	8	5	-	13	3	6	-	9
February	7	8	-	15	4	21	1	26	2	7	-	9
March	12	8	-	20	11	11	-	22	9	8	-	17
April	8	9	-	17	14	14	-	28	6	9	-	15
May	12	15	-	27	7	13	-	20	3	9	-	12
June	11	10	-	21	9	13	-	22	7	14	-	21
July	5	8	1	14	14	19	-	33	6	11	-	17
August	10	9	1	20	13	8	-	21	4	7	-	11
September	9	10	-	19	14	7	-	21	6	10	-	16
October	10	11	-	21	5	14	-	19	4	9	-	13
November	1	7	2	10	9	10	-	19	4	15	1	20
December	-	-	-	-	-	-	-	-	-	-	-	-
Total	93	107	4	204	108	135	1	244	54	105	1	160

¹ Identifies whether a vehicle occupant was belted (Yes), unbelted (No), or belt usage was not reported (Unk).

² Total vehicle occupant fatalities. Excludes motorcyclist, 4W/ATV, semi truck, pedestrian and pedalcyclist fatalities.

Fatalities by County and Month, 2017 to Date

County	Jan.	Feb.	Mar.	Apr.	May	Jun.	Jul.	Aug.	Sep.	Oct.	Nov.	Dec.	2017 Total, to Date	2016 Total, to Date
Bernalillo	9	8	4	8	7	4	8	10	7	13	5	-	83	95
Catron	-	-	1	-	-	-	-	-	-	-	-	-	1	-
Chaves	-	2	-	-	-	1	-	2	1	-	-	-	6	13
Cibola	-	-	1	2	1	2	1	2	1	-	1	-	11	17
Colfax	1	-	-	-	-	-	3	-	-	-	-	-	4	5
Curry	1	-	-	-	-	-	-	1	-	2	-	-	4	6
De Baca	-	-	-	-	-	-	-	-	-	-	-	-	-	5
Doña Ana	2	3	2	1	3	2	2	2	2	3	2	-	24	22
Eddy	1	1	2	1	2	2	2	-	1	3	2	-	17	7
Grant	-	2	-	-	1	-	-	2	-	1	-	-	6	3
Guadalupe	-	1	-	1	-	2	-	4	1	-	-	-	9	11
Harding	-	-	-	-	-	-	-	-	-	-	-	-	-	2
Hidalgo	-	2	-	-	-	7	1	2	-	-	-	-	12	3
Lea	4	-	3	1	1	1	1	1	-	-	-	-	12	11
Lincoln	-	-	1	-	2	-	1	-	1	1	-	-	6	7
Los Alamos	-	-	-	-	-	-	-	-	-	-	-	-	-	-
Luna	-	1	-	-	-	-	1	-	-	-	-	-	2	12
McKinley	1	1	1	2	2	4	2	2	1	3	2	-	21	17
Mora	-	-	2	-	-	-	-	-	-	-	-	-	2	4
Otero	-	1	1	-	1	-	1	-	-	-	1	-	5	3
Quay	-	1	-	-	-	-	-	-	-	-	-	-	1	4
Rio Arriba	-	-	-	2	-	-	1	1	1	-	1	-	6	10
Roosevelt	-	-	2	1	1	-	-	-	1	-	-	-	5	4
San Juan	5	1	4	-	3	2	-	2	3	6	1	-	27	30
San Miguel	-	-	-	2	-	-	-	-	-	1	-	-	3	7
Sandoval	1	1	1	-	5	2	1	2	1	1	1	-	16	16
Santa Fe	2	1	1	5	2	1	-	1	1	1	-	-	15	18
Sierra	-	2	1	-	-	-	-	1	1	2	-	-	7	3
Socorro	-	-	-	-	-	-	-	-	1	1	-	-	2	14
Taos	-	-	-	1	-	1	1	1	3	-	1	-	8	8
Torrance	1	-	1	1	-	1	-	-	-	1	-	-	5	11
Union	-	-	-	-	-	-	-	-	-	-	1	-	1	1
Valencia	2	1	-	-	1	1	-	-	2	-	3	-	10	6
Total	30	29	28	28	32	33	26	36	29	39	21	-	331	375

Fatalities by County Relating to Alcohol, Belt Use, and Under 21 BAC, 2017 to Date							
County	Alcohol-involved Fatalities ¹		Unbelted Fatalities		Under 21 (15-20) with a BAC ²		Total Fatalities
	Count	Percent ³	Count	Percent ³	Count	Percent ³	
Bernalillo	31	37.3%	19	22.9%	-	0.0%	83
Catron	-	0.0%	1	100.0%	-	0.0%	1
Chaves	2	33.3%	3	50.0%	1	16.7%	6
Cibola	3	27.3%	6	54.5%	-	0.0%	11
Colfax	-	0.0%	-	0.0%	-	0.0%	4
Curry	1	25.0%	1	25.0%	-	0.0%	4
De Baca	-	-	-	-	-	-	-
Doña Ana	8	33.3%	6	25.0%	-	0.0%	24
Eddy	3	17.6%	10	58.8%	1	5.9%	17
Grant	3	50.0%	5	83.3%	-	0.0%	6
Guadalupe	1	11.1%	2	22.2%	1	11.1%	9
Harding	-	-	-	-	-	-	-
Hidalgo	-	0.0%	2	16.7%	-	0.0%	12
Lea	4	33.3%	7	58.3%	-	0.0%	12
Lincoln	1	16.7%	-	0.0%	-	0.0%	6
Los Alamos	-	-	-	-	-	-	-
Luna	1	50.0%	1	50.0%	-	0.0%	2
McKinley	15	71.4%	7	33.3%	-	0.0%	21
Mora	-	0.0%	-	0.0%	-	0.0%	2
Otero	5	100.0%	2	40.0%	-	0.0%	5
Quay	-	0.0%	-	0.0%	-	0.0%	1
Rio Arriba	2	33.3%	3	50.0%	-	0.0%	6
Roosevelt	1	20.0%	1	20.0%	-	0.0%	5
San Juan	15	55.6%	13	48.1%	-	0.0%	27
San Miguel	1	33.3%	-	0.0%	-	0.0%	3
Sandoval	8	50.0%	3	18.8%	-	0.0%	16
Santa Fe	9	60.0%	3	20.0%	-	0.0%	15
Sierra	1	14.3%	2	28.6%	-	0.0%	7
Socorro	-	0.0%	2	100.0%	-	0.0%	2
Taos	4	50.0%	2	25.0%	-	0.0%	8
Torrance	-	0.0%	1	20.0%	-	0.0%	5
Union	-	0.0%	1	100.0%	-	0.0%	1
Valencia	3	30.0%	4	40.0%	-	0.0%	10
Total	122	36.9%	107	32.3%	3	0.9%	331

¹ All fatalities in alcohol-involved crashes.

² Fatalities under 21 with a reported BAC (Blood Alcohol Content) above zero.

³ Percentage based on total fatalities in the county.

Fatalities by Maintenance District and Month, 2017 to Date													
District	Jan.	Feb.	Mar.	Apr.	May	Jun.	Jul.	Aug.	Sep.	Oct.	Nov.	Dec.	Total
District 1	2	10	3	1	4	9	4	7	4	7	2	-	53
District 2	6	4	9	3	7	4	5	4	4	6	3	-	55
District 3	11	10	5	9	8	6	9	12	11	14	8	-	103
District 4	1	2	2	3	-	2	3	4	1	1	1	-	20
District 5	8	2	6	8	5	5	2	4	7	8	3	-	58
District 6	2	1	3	4	8	7	3	5	2	3	4	-	42
Total	30	29	28	28	32	33	26	36	29	39	21	-	331

Fatalities by Maintenance District Relating to Alcohol, Belt Use, and Under 21 BAC, 2017 to Date							
District	Alcohol-involved Fatalities ¹		Unbelted Fatalities		Under 21 (15-20) Fatalities with a BAC ²		Total Fatalities
	Count	Percent ³	Count	Percent ³	Count	Percent ³	
District 1	13	24.5%	18	34.0%	-	0.0%	53
District 2	17	30.9%	24	43.6%	2	3.6%	55
District 3	38	36.9%	25	24.3%	-	0.0%	103
District 4	2	10.0%	3	15.0%	1	5.0%	20
District 5	28	48.3%	22	37.9%	-	0.0%	58
District 6	24	57.1%	15	35.7%	-	0.0%	42
Total	122	36.9%	107	32.3%	3	0.9%	331

¹ All fatalities in alcohol-involved crashes.

² Fatalities under 21 with a reported BAC (Blood Alcohol Content) above zero.

³ Percentage based on total fatalities in the district