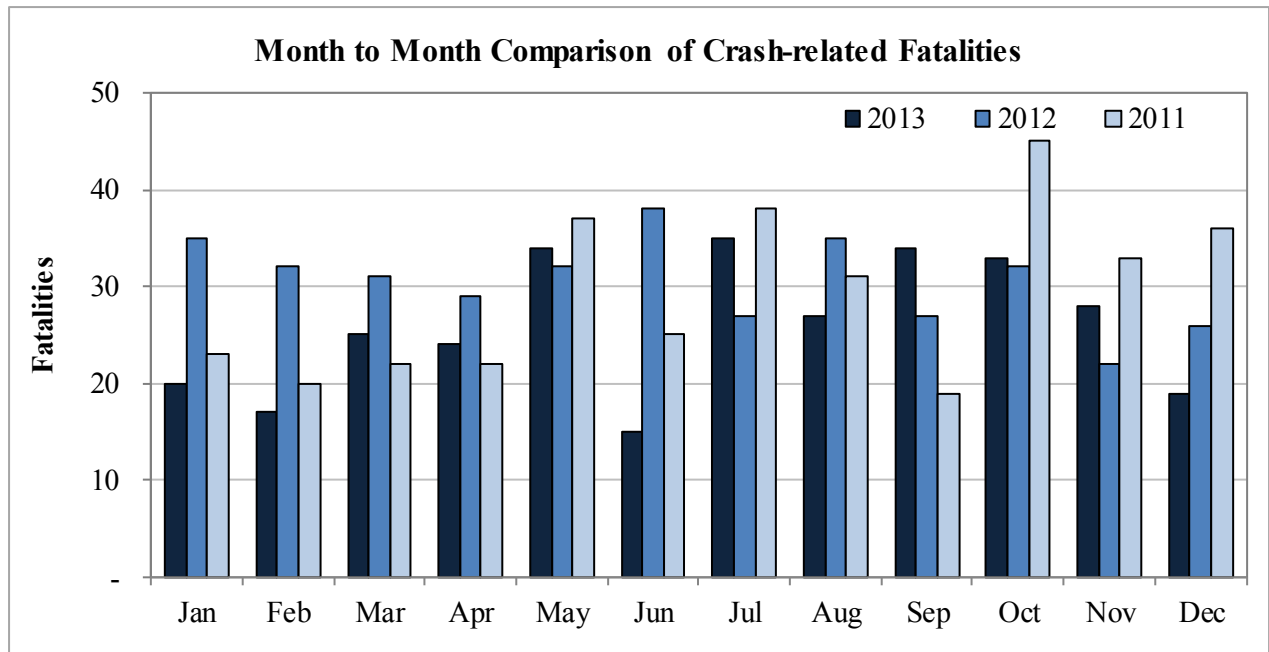


New Mexico Monthly Traffic Fatality Report, 2013

Produced for the New Mexico DOT - Planning and Traffic Safety Division under Contract # 5801
by the UNM Geospatial and Population Studies Traffic Research Unit (TRU)

Fatalities by Month 2013, 2012 and 2011			
Month	2013	2012	2011
January	20	35	23
February	17	32	20
March	25	31	22
April	24	29	22
May	34	32	37
June	15	38	25
July	35	27	38
August	27	35	31
September	34	27	19
October	33	32	45
November	28	22	33
December	19	26	36
Total	311	366	351



Fatalities by Vehicle Type, 2013										
Month in 2013	Cars	Pickup Trucks	Semi Trucks	Vans, SUVs, Utility Vehicles	ATV (4W)	Motorcyclists	Pedestrians	Pedalcyclists	Vehicle Type Unknown or Other	Total Fatalities
January	8	2	-	-	1	-	9	-	-	20
February	8	1	-	1	-	2	5	-	-	17
March	7	6	1	4	1	3	3	-	-	25
April	18	1	-	1	-	2	1	-	1	24
May	12	3	2	3	-	8	5	1	-	34
June	8	1	2	-	-	2	2	-	-	15
July	15	-	2	6	1	5	6	-	-	35
August	9	5	1	2	2	4	2	2	-	27
September	11	6	2	5	-	5	5	-	-	34
October	11	2	3	5	-	5	6	-	1	33
November	9	7	1	4	-	4	3	-	-	28
December	7	1	1	3	-	1	6	-	-	19
Total	123	35	15	34	5	41	53	3	2	311

Fatalities by Alcohol Involvement ¹ , 2013				
Month in 2013	Alcohol-involved ¹	Not Alcohol-involved	Alcohol Unknown	Total Fatalities
January	9	11	-	20
February	7	10	-	17
March	14	11	-	25
April	11	13	-	24
May	17	17	-	34
June	5	10	-	15
July	15	20	-	35
August	10	17	-	27
September	15	19	-	34
October	15	18	-	33
November	10	18	-	28
December	5	14	-	19
Total	133	178	-	311

Alcohol-involved ¹ Fatalities by Month			
Month	2013	2012	2011
January	9	18	8
February	7	13	10
March	14	21	8
April	11	11	11
May	17	14	15
June	5	16	5
July	15	9	21
August	10	12	10
September	15	11	9
October	15	11	26
November	10	5	18
December	5	12	11
Total	133	153	152

¹ All fatalities in alcohol-involved crashes.

Fatalities Under 21, 2013	
Age	Fatalities
1	1
2	1
3	4
4	3
5	1
6	2
7	-
8	1
9	-
10	-
11	-
12	1
13	4
14	1
15	-
16	1
17	1
18	12
19	9
20	10
Total	52

Month in 2013	Total Fatalities, 2013	Alcohol-involved ¹ Fatalities, 2013			
		Motorcyclist Fatalities	Percent Motorcyclist Fatalities	Pedestrian Fatalities	Percent Pedestrian Fatalities
January	20	-	0.0%	6	30.0%
February	17	-	0.0%	4	23.5%
March	25	2	8.0%	2	8.0%
April	24	1	4.2%	-	0.0%
May	34	6	17.6%	4	11.8%
June	15	1	6.7%	1	6.7%
July	35	1	2.9%	3	8.6%
August	27	2	7.4%	2	7.4%
September	34	2	5.9%	3	8.8%
October	33	2	6.1%	3	9.1%
November	28	2	7.1%	3	10.7%
December	19	-	0.0%	-	0.0%
Total	311	19	6.1%	31	10.0%

¹ All fatalities in alcohol-involved crashes.

Alcohol-involved ¹ Fatalities, 2013		
Alcohol-involved	133	42.8%
Not Alcohol-involved	178	57.2%
Alcohol Unknown	0	0.0%
Total	311	100.0%

¹ All fatalities in alcohol-involved crashes.

Motorcyclist/4W Helmet Usage, 2013	
Helmet Usage	Fatalities
Yes	7
No	39
Unknown	-
Total	46

Fatalities by Vehicle Occupant ¹ Seat Belt Usage, 2013				
Restraint	Yes	No	Unknown	Total
Seat Belt	60	130	2	192

¹ Total vehicle occupant fatalities. Excludes motorcyclist, 4W/ATV, semi truck, pedestrian and pedalcyclist fatalities.

Senior (65+) Fatalities	
Year	Fatalities
2011	45
2012	62
2013	42

Fatalities by Residency and Location, 2013				
Location	New Mexico Resident	Non-Resident	Unknown Residency	Total
Rural	173	39	-	212
Urban	92	7	-	99
Unknown	-	-	-	-
Total	265	46	-	311

Month to Month Comparison of Fatalities by Alcohol Involvement, 2013, 2012 and 2011												
Month	2013 Fatalities				2012 Fatalities				2011 Fatalities			
	Alcohol-involved ¹			Total	Alcohol-involved ¹			Total	Alcohol-involved ¹			Total
	Yes	No	Unk		Yes	No	Unk		Yes	No	Unk	
January	9	11	-	20	18	17	-	35	8	15	-	23
February	7	10	-	17	13	19	-	32	10	10	-	20
March	14	11	-	25	21	10	-	31	8	14	-	22
April	11	13	-	24	11	18	-	29	11	11	-	22
May	17	17	-	34	14	18	-	32	15	22	-	37
June	5	10	-	15	16	22	-	38	5	20	-	25
July	15	20	-	35	9	18	-	27	21	17	-	38
August	10	17	-	27	12	23	-	35	10	21	-	31
September	15	19	-	34	11	16	-	27	9	10	-	19
October	15	18	-	33	11	21	-	32	26	19	-	45
November	10	18	-	28	5	17	-	22	18	15	-	33
December	5	14	-	19	12	14	-	26	11	25	-	36
Total	133	178	-	311	153	213	-	366	152	199	-	351

¹ Identifies whether the fatality resulted from an alcohol-involved crash.

Month to Month Comparison of Fatalities by Seat Belt Usage, 2013, 2012 and 2011												
Month	2013 Fatalities				2012 Fatalities				2011 Fatalities			
	Seat Belt ¹			Total ²	Seat Belt ¹			Total ²	Seat Belt ¹			Total ²
	Yes	No	Unk		Yes	No	Unk		Yes	No	Unk	
January	2	8	-	10	8	18	-	26	2	14	-	16
February	3	7	-	10	7	11	-	18	6	9	-	15
March	7	8	2	17	8	11	-	19	10	5	-	15
April	6	14	-	20	9	10	-	19	8	7	-	15
May	10	8	-	18	2	16	-	18	12	10	-	22
June	1	8	-	9	10	14	-	24	13	7	-	20
July	6	15	-	21	7	7	-	14	12	17	-	29
August	3	13	-	16	5	15	-	20	7	11	-	18
September	3	19	-	22	5	7	-	12	1	13	-	14
October	12	6	-	18	9	11	-	20	6	24	-	30
November	7	13	-	20	8	9	-	17	12	13	-	25
December	-	11	-	11	4	9	-	13	22	10	-	32
Total	60	130	2	192	82	138	-	220	111	140	-	251

¹ Identifies whether a vehicle occupant was belted (Yes), unbelted (No), or belt usage was not reported (Unk).

² Total vehicle occupant fatalities. Excludes motorcyclist, 4W/ATV, semi truck, pedestrian, and pedalcyclist fatalities.

County	Fatalities by County and Month, 2013												2013 Total	2012 Total
	Jan.	Feb.	Mar.	Apr.	May	Jun.	Jul.	Aug.	Sep.	Oct.	Nov.	Dec.		
Bernalillo	2	6	1	5	7	5	4	2	3	8	4	3	50	69
Catron	-	2	-	1	-	-	-	1	1	-	1	-	6	2
Chaves	-	-	1	-	-	-	1	1	2	3	1	1	10	8
Cibola	4	1	1	1	2	1	-	1	-	1	2	2	16	8
Colfax	1	-	1	-	1	-	-	1	-	-	1	1	6	5
Curry	1	-	-	1	-	-	-	-	1	-	-	1	4	4
De Baca	-	-	-	-	-	-	-	-	1	-	1	-	2	1
Doña Ana	-	-	2	1	1	1	1	5	-	2	1	-	14	27
Eddy	2	-	2	3	-	-	2	-	1	4	-	1	15	14
Grant	1	1	-	-	2	-	1	-	-	-	-	-	5	6
Guadalupe	-	-	-	-	2	-	1	-	1	1	-	1	6	8
Harding	-	-	-	-	-	1	-	-	-	-	-	-	1	3
Hidalgo	-	-	-	-	-	-	-	-	-	1	-	-	1	3
Lea	1	-	-	-	1	1	-	2	3	2	2	-	12	17
Lincoln	-	-	-	-	1	-	-	2	-	1	-	-	4	4
Los Alamos	-	-	-	-	-	-	-	-	-	-	-	-	-	-
Luna	-	-	1	1	1	-	1	2	-	-	-	-	6	5
McKinley	4	-	5	-	4	1	3	1	4	-	3	1	26	29
Mora	-	-	-	-	1	1	1	-	-	-	-	-	3	5
Otero	-	-	1	1	-	-	-	1	2	1	2	-	8	16
Quay	2	-	1	-	-	-	-	-	-	1	2	-	6	5
Rio Arriba	-	-	2	3	1	-	3	2	1	1	-	-	13	19
Roosevelt	-	-	1	-	-	-	2	-	-	-	1	-	4	2
San Juan	-	2	2	4	-	2	4	1	3	3	3	3	27	27
San Miguel	1	1	-	3	-	1	1	-	-	-	-	-	7	9
Sandoval	-	1	-	-	-	1	6	4	2	1	-	3	18	12
Santa Fe	1	1	2	-	1	-	2	-	-	-	2	-	9	18
Sierra	-	1	-	-	1	-	-	-	1	1	-	-	4	6
Socorro	-	-	-	-	2	-	-	-	5	1	-	-	8	4
Taos	-	-	2	-	1	-	1	1	1	-	-	-	6	8
Torrance	-	-	-	-	4	-	1	-	2	1	2	1	11	10
Union	-	-	-	-	-	-	-	-	-	-	-	1	1	2
Valencia	-	1	-	-	1	-	-	-	-	-	-	-	2	10
Total	20	17	25	24	34	15	35	27	34	33	28	19	311	366

Fatalities by County Relating to Alcohol, Belt Use, and Under 21 BAC, 2013							
County	Alcohol-involved Fatalities ¹		Unbelted Fatalities		Under 21 (15-20) with a BAC ²		Total Fatalities
	Count	Percent ³	Count	Percent ³	Count	Percent ³	
Bernalillo	23	46.0%	9	18.0%	1	2.0%	50
Catron	2	33.3%	5	83.3%	-	0.0%	6
Chaves	5	50.0%	5	50.0%	-	0.0%	10
Cibola	6	37.5%	10	62.5%	-	0.0%	16
Colfax	2	33.3%	1	16.7%	-	0.0%	6
Curry	1	25.0%	2	50.0%	-	0.0%	4
De Baca	-	0.0%	1	50.0%	-	0.0%	2
Doña Ana	6	42.9%	4	28.6%	-	0.0%	14
Eddy	2	13.3%	6	40.0%	1	6.7%	15
Grant	1	20.0%	1	20.0%	-	0.0%	5
Guadalupe	1	16.7%	1	16.7%	-	0.0%	6
Harding	-	0.0%	-	0.0%	-	0.0%	1
Hidalgo	1	100.0%	-	0.0%	-	0.0%	1
Lea	5	41.7%	7	58.3%	1	8.3%	12
Lincoln	4	100.0%	-	0.0%	-	0.0%	4
Los Alamos	-	-	-	-	-	-	-
Luna	2	33.3%	3	50.0%	1	16.7%	6
McKinley	17	65.4%	12	46.2%	1	3.8%	26
Mora	-	0.0%	2	66.7%	-	0.0%	3
Otero	3	37.5%	3	37.5%	-	0.0%	8
Quay	1	16.7%	3	50.0%	-	0.0%	6
Rio Arriba	6	46.2%	5	38.5%	-	0.0%	13
Roosevelt	1	25.0%	2	50.0%	-	0.0%	4
San Juan	15	55.6%	17	63.0%	-	0.0%	27
San Miguel	4	57.1%	4	57.1%	1	14.3%	7
Sandoval	5	27.8%	11	61.1%	-	0.0%	18
Santa Fe	6	66.7%	1	11.1%	-	0.0%	9
Sierra	2	50.0%	2	50.0%	1	25.0%	4
Socorro	1	12.5%	5	62.5%	-	0.0%	8
Taos	3	50.0%	2	33.3%	-	0.0%	6
Torrance	6	54.5%	3	27.3%	-	0.0%	11
Union	1	100.0%	1	100.0%	-	0.0%	1
Valencia	1	50.0%	2	100.0%	-	0.0%	2
Total	133	42.8%	130	41.8%	7	2.3%	311

¹ All fatalities in alcohol-involved crashes.

² Fatalities under 21 with a reported BAC (Blood Alcohol Content) above zero.

³ Percentage based on total fatalities in the county.

Fatalities by Maintenance District and Month, 2013													
District	Jan.	Feb.	Mar.	Apr.	May	Jun.	Jul.	Aug.	Sep.	Oct.	Nov.	Dec.	Total
District 1	1	2	3	2	7	1	3	7	6	5	1	-	38
District 2	4	-	5	5	2	1	5	6	10	11	7	3	59
District 3	2	8	1	5	8	6	9	6	5	9	4	6	69
District 4	3	1	2	3	3	3	3	1	1	2	3	3	28
District 5	2	4	7	7	8	2	11	4	7	5	7	4	68
District 6	8	2	7	2	6	2	4	3	5	1	6	3	49
Total	20	17	25	24	34	15	35	27	34	33	28	19	311

Fatalities by Maintenance District Relating to Alcohol, Belt Use, and Under 21 BAC, 2013							
District	Alcohol-involved Fatalities ¹		Unbelted Fatalities		Under 21 (15-20) Fatalities with a BAC ²		Total Fatalities
	Count	Percent ³	Count	Percent ³	Count	Percent ³	
District 1	13	34.2%	15	39.5%	2	5.3%	38
District 2	21	35.6%	26	44.1%	2	3.4%	59
District 3	28	40.6%	21	30.4%	1	1.4%	69
District 4	8	28.6%	12	42.9%	1	3.6%	28
District 5	37	54.4%	28	41.2%	0	0.0%	68
District 6	26	53.1%	28	57.1%	1	2.0%	49
Total	133	42.8%	130	41.8%	7	2.3%	311

¹ All fatalities in alcohol-involved crashes.

² Fatalities under 21 with a reported BAC (Blood Alcohol Content) above zero.

³ Percentage based on total fatalities in the district