

**D** riving  
**W** hile  
**I** mpaired



**NewMexico 2005**



**Message from Rachel O'Connor  
State DWI Czar  
Office of the Governor**



Impaired driving is a problem that touches every New Mexican, and its solution involves virtually every agency in state government. Over the past several years, state agencies have come together to share their knowledge and resources to help to reduce DWI in New Mexico. In 2005, New Mexico had an 11% reduction in alcohol related fatalities and a 20% reduction in alcohol related injury crashes. In 2005, New Mexico had its lowest rates ever of alcohol related deaths per 100,000 population.

Despite progress, the Richardson administration's effort to reduce DWI will continue. 2005 marked the onset of a flurry of new policies and programs in the areas of public awareness, enforcement, education and treatment. The Department of Transportation doubled the efforts of full time law enforcement in the counties with the highest DWI crash fatality rate, and funded over 700 DWI checkpoints. "You Drink, You Drive, You Lose" our public awareness campaign, has become a statewide slogan. The Mobile Strike Unit developed by the Department of Public Safety has cracked down on establishments that are serving minors and persons who are intoxicated. Based on recommendations of a statewide Task Force, the Regulation and Licensing Department has increased the penalties for establishments who consistently violate the law. Our new toll free "Drunkbusters" hotline is being used to report and to arrest drunk drivers.

The State's Comprehensive Impaired Driving Plan serves as the driving force for the Governor's DWI initiatives. Our partners at the federal level—the National Highway Traffic Safety Administration—offer assistance in implementing the Governor's Highway Safety Plan. Many state agencies including the Department of Transportation, the Department of Public Safety, the Regulation and Licensing Department, the Department of Health and others will work together to insure that New Mexico is taking a comprehensive approach to reducing death and injury due to DWI. Together we can all work to make our roads safer for all New Mexicans.

**FOR MORE INFORMATION CONTACT:**

New Mexico Department of Transportation  
Traffic Safety Bureau  
505-827-0427  
1-800-541-7952

The University of New Mexico, Division of Government Research, produces this "Driving While Impaired" report for the New Mexico Department of Transportation. The report provides statistical information that contributes to the impaired driving plan and the DWI initiatives conducted statewide.

**On the Cover:**

The entrance to the Emergency Room at the University of New Mexico Hospital.  
Photo by Joseph Culpepper, UNM Emergency Medicine.

# DWI in New Mexico

is a publication of the

New Mexico Department of Transportation  
Programs Division  
Traffic Safety Bureau

P.O. Box 1149  
Santa Fe, NM 87504-1149  
(505) 827-0427

<http://www.nmshtd.state.nm.us/main.asp?secid=14474>

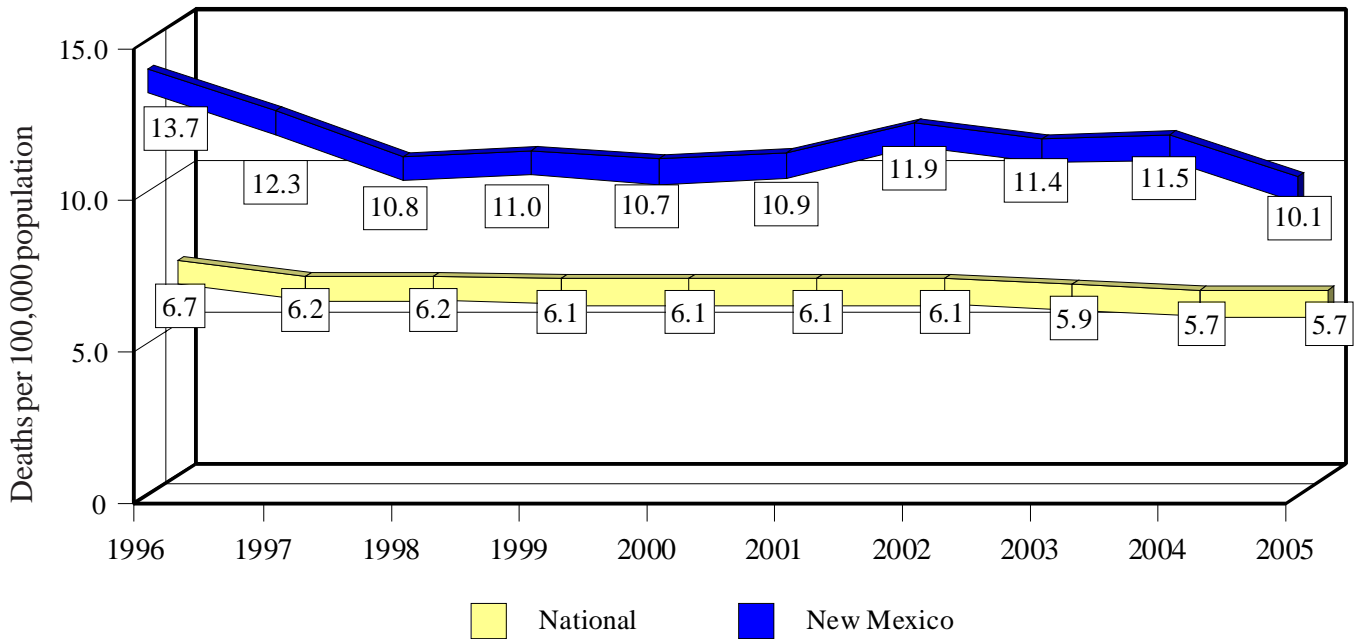
## CONTENTS

<b>Impact on New Mexico</b>	<b>2</b>
<b>Laws</b>	<b>4</b>
<b>Where</b>	<b>6</b>
<b>When</b>	<b>8</b>
<b>Who</b>	<b>10</b>
<b>BAC Tests</b>	<b>11</b>
<b>Case Results</b>	<b>12</b>
<b>Trends</b>	<b>13</b>
<b>Repeat Offenders</b>	<b>14</b>
<b>Index and Sources</b>	<b>16</b>
<b>Per Capita Costs of Crashes Map</b>	<b>Back Cover</b>

The Traffic Safety Bureau of the New Mexico Department of Transportation (NMDOT) develops programs to address traffic issues in the state. The mission of the Bureau is to continuously reduce traffic-related fatalities, injuries and crashes. Program initiatives include education, enforcement, regulation, legislation, prevention, screening and treatment, and public information. The Bureau works in partnership with New Mexico law enforcement agencies statewide to enforce traffic safety laws.

**Note:** The 1999 crash file contains 15% fewer crashes than the 1998 file. This may be due to problems in implementing the new system after the old system failed, or to under-reporting. Care should be used when interpreting differences between 1999 and other years in this report.

## Alcohol-involved Fatality Rates, 1996-2005



Source: Fatality Analysis Reporting System, the Census Bureau and Crash files

**Note on drugs other than alcohol:** As in previous years, counts of other drug involvement are included in counts of alcohol involvement. This year there were 104 drug-involved drivers. The sole drug-involved driver in a fatal crash was both drug and alcohol-involved.

## Contributing Factors in Fatal Crashes, 2005

Contributing Factor	Count	Percent	Percent of Involvements
Driver inattention	212	31.3	31.3
Excessive speed	199	29.4	29.4
Alcohol involved	178	26.3	26.3
Other	137	20.2	20.2
Other improper driving	75	11.1	11.1
Drove left of center	69	10.2	10.2
Failure to yield	32	4.7	4.7
Disregard traffic control	23	3.4	3.4
Mechanical defects	19	2.8	2.8
Follow too close	11	1.6	1.6
Improper overtaking	9	1.3	1.3
Improper turn	6	0.9	0.9
Total	677		

Source: Crash files

- ◆ These are counts of all factors reported to have contributed to fatal crashes. These are *not* the same thing as fatal crash counts. A single crash often involves more than one vehicle, and each vehicle may be affected by more than one factor. The percents shown are the percents of vehicles in fatal crashes which were affected by each of the contributing factors. For these reasons the total here is higher than in other tables presenting fatal crash information, and the percentages sum to more than 100.

## Victims of Alcohol-involved Crashes, 2005

County	People in Crashes			Impact (in dollars) <sup>2</sup>		2005 Population <sup>3</sup>
	Total	Sober <sup>1</sup>	Under 18	Total (000)	Per capita	
Bernalillo	1,951	932	470	186,116	308	603,562
Catron	1	1	0	597	175	3,409
Chaves	167	68	28	24,046	389	61,860
Cibola	95	34	16	22,029	798	27,620
Colfax	47	9	7	13,178	958	13,755
Curry	107	48	25	13,405	292	45,846
De Baca	1	0	0	597	296	2,016
Doña Ana	472	194	103	72,500	383	189,444
Eddy	156	43	34	23,655	460	51,437
Grant	75	28	13	13,277	446	29,747
Guadalupe	38	18	4	8,972	2,054	4,369
Harding	0	0	0	0	0	740
Hidalgo	18	5	4	4,582	892	5,139
Lea	165	67	33	25,403	448	56,719
Lincoln	99	22	19	19,123	910	21,007
Los Alamos	31	4	4	5,704	303	18,822
Luna	41	20	9	4,447	168	26,498
McKinley	537	220	147	85,630	1,191	71,918
Mora	18	4	2	5,953	1,166	5,107
Otero	108	31	13	17,518	276	63,538
Quay	7	4	1	803	87	9,259
Rio Arriba	145	44	19	36,280	889	40,828
Roosevelt	43	14	5	7,864	431	18,238
Sandoval	236	81	38	47,319	440	107,460
San Juan	574	202	110	91,334	724	126,208
San Miguel	82	24	14	19,017	644	29,530
Santa Fe	684	277	122	101,128	718	140,855
Sierra	25	6	3	4,241	331	12,815
Socorro	67	32	11	14,577	803	18,148
Taos	93	28	17	19,656	620	31,722
Torrance	28	8	6	5,996	343	17,501
Union	10	3	1	1,421	369	3,850
Valencia	143	59	35	24,132	348	69,417
<b>Total</b>	<b>6,264</b>	<b>2,530</b>	<b>1,313</b>	<b>920,501</b>	<b>477</b>	<b>1,928,384</b>

Source: Crash files

- 1 Sober people are drivers, passengers and pedestrians who were involved in a crash with a driver or pedestrian who had been drinking.
- 2 Impact is the cost of DWI related crashes in New Mexico based on Federal Highway Administration estimation formulae (*The Costs of Highway Crashes*, FHWA-RD-91-055, Federal Highway Administration, 1991). The figures are based on 1988 dollars, adjusted for inflation to 2005 dollars. **These are estimates, not actual dollar amounts.** Included are direct costs such as lost wages and medical expenses, and indirect "willingness to pay" estimates of lost quality of life.
- 3 Population estimates are for July 2005 and are from the U.S. Census Bureau.

## DWI Penalties in New Mexico\*

Offense	Administrative License Revocation
Implied Consent Violation (Driving with BAC over legal limit or refusal to take BAC test)	Age under 21 and BAC at least .02: 1 year for first offense Age 21 or older and BAC at least .08: 90 days for first offense CDL and BAC at least .04: 90 days for first offense No limited license <sup>1</sup> Refusal: 1 year Any subsequent offense: 1 year Ignition interlock license available <sup>2</sup>

Note that this is **not** a criminal offense, and the resulting license revocation is an administrative, not a criminal penalty. Municipalities are prohibited from establishing *per se* BAC limits different from state limits (§66-8-102.2). Licenses remain revoked until offenders reinstate them.

Criminal Sanctions (Basic Sentence)					Aggravated <sup>3</sup>
DWI Offense	Jail <sup>4</sup>	Fines/Fees/Costs <sup>5</sup>	License Revocation	Other	If convicted of ADWI
<b>1st</b> Misdemeanor §66-8-102E	<b>Maximum:</b> 90 days <sup>4</sup>  <b>Mandatory:</b> 48 hours if offender fails to comply with any condition of probation	<b>Maximum:</b> \$500 §66-8-102E License Fee: \$100 §66-5-33.1 Crime Lab Fee: \$65 §31-12-7A Community Fee: \$75 §31-12-7B DWI School: up to \$150 Alcohol Screening: \$100-\$200 Limited license: \$45 Interlock license fee: \$45 Interlock costs: \$960+/yr. Corrections fee: \$20	1 year  No limited license <sup>1</sup>  Interlock license required 66-8-102N(1)	<b>Mandatory:</b> screening <sup>6</sup> DWI school Interlock installed for 1 year Community service <b>If ordered by Court:</b> treatment <sup>6</sup> §66-8-102E,K Probation (up to 1 year)	<b>Mandatory:</b> additional 48 hours jail §66-8-102D,E
<b>2nd</b> Misdemeanor §66-8-102F	<b>Mandatory:</b> 96 hours <b>Maximum:</b> 364 days <sup>4</sup>  <b>Mandatory:</b> 7 days if offender fails to comply with sentence	<b>Maximum:</b> \$1,000 §66-8-102F <b>Mandatory:</b> \$500 §66-8-102F(1)  Fees and costs are the same as for first offense	2 years §66-5-29A(3)  Interlock license required <sup>2</sup> §66-8-102N(2)  No limited license §66-5-35A(3) <sup>1</sup>	<b>Mandatory:</b> 48 hours community service, ignition interlock, screening <sup>6</sup> , treatment §66-8-102F(1),L,K,N <b>If ordered by court:</b> up to 5 years probation §66-8-102F	<b>Mandatory:</b> additional 96 hours jail, §66-8-102D & F(1)
<b>3rd</b> Misdemeanor §66-8-102F	<b>Mandatory:</b> 30 days <b>Maximum:</b> 364 days <sup>4</sup>  <b>Mandatory:</b> 60 days if offender fails to comply with sentence	<b>Maximum:</b> \$1,000 §66-8-102F <b>Mandatory:</b> \$750 §66-8-102F(2)  Fees and costs are the same as for first offense	3 years  Ignition interlock license required 66-8-102N(3) <sup>2</sup>	<b>Mandatory:</b> screening <sup>6</sup> treatment, ignition interlock §66-8-102L,K,N <b>If ordered by court:</b> probation, up to 5 years §66-8-102F Vehicle forfeiture in civil action in the cities of Albuquerque, Las Cruces, and Santa Fe, & the counties of Doña Ana, Santa Fe, and Torrance.	<b>Mandatory:</b> additional 60 days jail §66-8-102D & F(2)

\* All section numbers (§...) refer to New Mexico Statutes Annotated, 1978

<b>Criminal Sanctions (Basic Sentence) - continued</b>				
<b>DWI Offense</b>	<b>Jail<sup>4</sup></b>	<b>Fines/Fees/Costs<sup>5</sup></b>	<b>License Revocation</b>	<b>Other</b>
<b>4th or 5th</b> 4th Degree Felony §66-8-102G	<b>Mandatory:</b> 6 months (4th) 1 year for (5th) §66-8-102F,G  <b>Maximum:</b> 18 months (4th) <sup>4</sup> 2 years (5th) <sup>4</sup> §66-8-102F,G	<b>Maximum:</b> \$5,000 §31-18-15E(5)  Fees and costs are the same as for first offense	revoked for life ignition interlock license required 66-5-29A(3) & 66-5-29C(2)(c) Offender may apply to district ct. for restoration of license after 5 years.	<b>Mandatory:</b> treatment, screening <sup>6</sup> , ignition interlock for life §66-8-102K,M,P  vehicle forfeiture in civil action as for 3rd
<b>6th or subsequent</b>  3rd Degree Felony §66-8-102I,J	<b>Mandatory:</b> 18 months(6th) 2 years (7th+) §66-8-102I,J  <b>Maximum:</b> 30 months (6th) <sup>4</sup> 3 years (7th+) <sup>4</sup> §66-8-102I,J	<b>Maximum:</b> \$5,000 §31-18-15E(5)  Fees and costs are the same as for first offense	Same as for fourth offense	<b>Mandatory:</b> treatment, screening <sup>6</sup> , ignition interlock for life §66-8-102K,H,M,P  vehicle forfeiture in civil action as for 3rd
<b>Vehicular Homicide</b>  3rd Degree Felony §66-8-101	<b>Maximum:</b> 6 years per offense <sup>2</sup> §31-18-15A(5)	<b>Maximum:</b> \$5,000 §31-18-15E(4)	Depends on number of prior DWI offenses  No interlock license available	4 years extra jail time added for <b>each</b> prior DWI conviction in the past 10 years. §66-8-101D, including tribal convictions, §66-8-101E(2)
<b>Driving While Revoked for DWI</b>  Misdemeanor §66-5-39	<b>Mandatory:</b> 7 days §66-5-39A <b>Maximum:</b> 364 days <sup>4</sup> §66-5-39A	<b>Mandatory:</b> \$300 §66-5-39A <b>Maximum:</b> \$1,000 §66-5-39A	1 year §66-5-39C	30 days immobilization of vehicle driven by offender. §66-5-39B  vehicle forfeiture in civil action as for 3rd

## Notes on DWI Penalties

1. **Limited license:** A limited license is restricted to driving to or from work or school or to attend court-ordered treatment and is no longer available to persons convicted of DWI, 66-6-35A(3).
  2. **An ignition interlock license** allows drivers to drive without time and place restrictions and is available to every revoked driver except those who have committed vehicular homicide or great bodily injury by vehicle while under the influence of intoxicating liquor or drugs. An interlock is defined as "a device, approved by the traffic safety bureau, that prevents the operation of a motor vehicle by an intoxicated or impaired person." 66-5-502B. The penalty for driving without an interlock when it's required by license is the same as driving while revoked, 66-5-504, 66-5-39. For an ignition interlock license application go to <http://ipl.unm.edu/traf/pubs/mvd10792.pdf>.
  3. **Aggravated DWI** is a conviction for DWI when the offender: (a) drove with a BAC (Blood Alcohol Concentration) of .16 or higher, **or** (b) caused a person bodily injury while DWI, **or** (c) refused a BAC test when arrested.
  4. **Mandatory jail time** must be served consecutively.
  5. **Fines and Fees** do not include increased insurance costs, treatment, lost wages, towing and storage, court costs and attorney fees.
  6. **Screening:** The judge shall sentence the offender to alcohol screening; the court will approve screening programs; the court does not have to order the offender to pay for it (§66-8-102K).
- ◆ *A deferred sentence on a first offense is considered a first offense for the purposes of defining subsequent offenses (§66-8-102E).*

Source: Institute of Public Law, UNM School of Law. Laws are available at IPL's website ( <http://ipl.unm.edu/traf>).

## Alcohol-involved Crashes and DWI Convictions by County, 2005

County	Crashes <sup>1</sup>				People Killed	People Injured	DWI Conv.	Rates <sup>2</sup>		2005 Licensed Drivers
	Alcohol Fatal	% of all Fatal	Alcohol Injury	% of all Injury				Severe <sup>3</sup> Alcohol Crashes	DWI Conv.	
Bernalillo	32	48	350	5	39	550	3,317	0.9	7.8	423,081
Catron	0	0	0	0	0	0	22	0	6.8	3,230
Chaves	4	44	37	8	4	64	265	1.0	6.2	42,580
Cibola	6	38	19	12	9	34	247	1.5	15.3	16,171
Colfax	5	63	13	12	5	17	59	1.7	5.5	10,666
Curry	5	38	26	8	5	39	180	1.0	6.0	30,218
De Baca	0	0	1	8	0	1	6	0.6	3.5	1,693
Doña Ana	5	24	89	8	5	141	1,137	0.8	9.2	123,685
Eddy	7	78	38	11	8	64	220	1.2	6.0	36,936
Grant	0	0	26	12	0	36	150	1.2	6.6	22,570
Guadalupe	1	17	10	16	1	24	28	3.5	8.9	3,156
Harding	0	0	0	0	0	0	6	0	9.8	612
Hidalgo	1	20	5	16	1	9	32	1.7	9.1	3,512
Lea	4	29	36	9	4	60	217	1.0	5.6	39,026
Lincoln	2	33	24	15	2	30	139	1.5	8.2	16,885
Los Alamos	1	50	13	16	1	15	44	0.9	2.8	15,965
Luna	2	11	6	5	6	10	110	0.4	6.1	18,131
McKinley	23	59	78	18	28	146	736	2.7	19.5	37,674
Mora	2	50	3	10	2	7	40	1.4	10.8	3,694
Otero	0	0	31	8	0	45	276	0.8	7.0	39,239
Quay	0	0	0	0	0	0	57	0	7.7	7,362
Rio Arriba	11	65	33	15	12	63	393	1.5	13.0	30,145
Roosevelt	0	0	13	10	0	19	90	1.1	7.5	11,992
Sandoval	3	14	63	9	3	100	538	0.8	6.9	77,861
San Juan	15	47	108	10	16	171	1,278	1.6	17.1	74,728
San Miguel	5	42	23	15	5	36	230	1.5	12.5	18,343
Santa Fe	13	45	139	9	15	209	955	1.5	9.1	104,648
Sierra	1	100	6	13	1	13	47	0.7	5.0	9,381
Socorro	6	38	11	11	6	20	134	1.4	11.4	11,760
Taos	5	63	18	7	5	30	177	0.9	7.3	24,212
Torrance	3	25	8	8	3	14	88	1.0	7.9	11,149
Union	0	0	2	7	0	2	22	0.6	6.9	3,187
Valencia	5	50	32	9	8	53	373	0.8	7.6	48,766
Other							798			
Total	167	40	1,261	8	194	2,022	12,411	1.1	9.4	1,322,258

Sources: Crash files and Driver History file

<sup>1</sup> The crash percentages shown are the percent of all crashes which involved alcohol. For example, 48 percent of all Bernalillo County fatal crashes involved alcohol, and resulted in 39 fatalities.

<sup>2</sup> Rates are per 1,000 licensed drivers.

<sup>3</sup> Severe crashes are those involving death or injury.

◆ DWI convictions are those handed down in 2005. The citations that resulted in these convictions could have been issued prior to 2005. See the note on page 14 for a complete explanation. Convictions are counted by county of driver residence, not the county in which the citation was issued. Driver residence county was determined by ZIP code. The 798 convictions received by drivers with missing, invalid, or out-of-state ZIP codes are shown as “Other” and are included in the total.



## Alcohol-involved Crashes and DWI Convictions by City, 2005

City	Crashes <sup>1</sup>				People Killed	People Injured	DWI Conv.	Rates <sup>2</sup>		2005 Licensed Drivers
	Alcohol Fatal	% of all Fatal	Alcohol Injury	% of all Injury				Severe <sup>3</sup> Alcohol Crashes	DWI Conv.	
Alamogordo	0	0	15	6	0	19	182	0.6	7.0	26,066
Albuquerque	30	54	337	5	36	527	3,252	0.9	8.0	407,855
Artesia	0	0	4	8	0	4	55	0.4	4.9	11,228
Aztec	0	0	3	6	0	3	119	0.3	10.6	11,179
Bayard	0	0	0	0	0	0	20	0	11.2	1,779
Belen	0	0	5	13	0	9	96	0.3	6.5	14,764
Bernalillo	0	0	7	7	0	14	69	1.1	11.0	6,261
Bloomfield	2	100	2	5	2	4	123	0.4	12.8	9,597
Bosque Farms	0	0	1	6	0	2	28	0.3	7.3	3,839
Carlsbad	3	100	23	11	3	29	148	1.1	6.2	23,794
Clayton	0	0	1	14	0	1	21	0.5	9.6	2,193
Clovis	1	17	21	8	1	24	166	0.8	6.0	27,783
Corrales	0	0	1	6	0	1	17	0.1	2.2	7,721
Deming	1	25	3	5	2	4	99	0.2	5.9	16,668
Española	0	0	18	7	0	34	170	1.5	14.6	11,630
Eunice	0	0	0	0	0	0	10	0	4.8	2,094
Farmington	0	0	51	9	0	62	521	1.5	14.8	35,099
Gallup	2	50	29	13	2	35	246	2.1	16.5	14,936
Grants	1	50	9	13	1	15	94	1.4	13.4	7,003
Hobbs	2	33	17	6	2	32	144	0.7	5.6	25,687
Jal	0	0	1	50	0	2	6	0.6	3.7	1,608
Las Cruces	1	14	60	7	1	87	643	0.8	8.1	79,234
Las Vegas	0	0	10	11	0	19	175	0.8	14.2	12,342
Lordsburg	0	0	2	25	0	4	24	0.8	9.5	2,529
Los Alamos	1	50	11	14	1	13	44	0.8	2.8	15,965
Los Lunas	1	50	18	11	1	24	230	0.7	8.8	26,037
Lovington	0	0	5	11	0	5	52	0.6	6.1	8,479
Milan	1	100	0	0	1	0	39	0.5	20.4	1,915
Portales	0	0	7	9	0	9	88	0.6	8.0	11,054
Raton	1	100	7	13	1	7	37	1.3	6.0	6,194
Rio Rancho	1	14	25	6	1	35	255	0.5	5.3	48,532
Roswell	2	67	28	8	2	47	223	0.8	6.0	37,342
Ruidoso	1	100	10	14	1	11	72	1.4	9.5	7,605
Santa Fe	4	50	88	8	4	137	848	1.0	9.5	88,889
Silver City	0	0	15	12	0	20	88	1.1	6.2	14,191
Socorro	1	50	6	15	1	12	94	1.0	13.4	7,018
Sunland Park	0	0	2	8	0	2	71	0.3	10.2	6,954
Taos	1	50	8	6	1	11	58	1.0	6.6	8,812
T or C	1	100	3	12	1	8	32	0.8	6.1	5,204
Tucumcari	0	0	0	0	0	0	49	0	9.0	5,429
Tularosa	0	0	0	0	0	0	38	0	10.1	3,771

Sources: Crash files and Driver History file

- ◆ The notes for the previous table apply here as well.

## Alcohol-involved Crashes and DWI Arrests by Month, 2005

Month	Crashes		Crashes	Arrests		Arrests
	Total	Percent		Total	Percent	
January	215	7.9		1,643	8.9	
February	208	7.6		1,600	8.7	
March	207	7.6		1,480	8.0	
April	248	9.1		1,662	9.0	
May	257	9.4		1,609	8.7	
June	226	8.3		1,408	7.6	
July	261	9.5		1,543	8.4	
August	245	9.0		1,410	7.6	
September	215	7.9		1,593	8.6	
October	245	9.0		1,534	8.3	
November	188	6.9		1,445	7.8	
December	222	8.1		1,533	8.3	
<b>Total</b>	<b>2,737</b>	<b>100.0</b>	<b>100 200 300</b>	<b>18,460</b>	<b>100.0</b>	<b>900 1,800</b>

Source: Crash files and DWI Citation Tracking file

## Alcohol-involved Crashes and DWI Arrests by Day of the Week, 2005

Day	Crashes		Crashes	Arrests		Arrests
	Total	Percent		Total	Percent	
Sunday	347	12.7		1,683	9.1	
Monday	306	11.2		1,359	7.4	
Tuesday	306	11.2		1,682	9.1	
Wednesday	280	10.2		2,153	11.7	
Thursday	324	11.8		2,882	15.6	
Friday	570	20.8		4,469	24.2	
Saturday	604	22.1		4,232	22.9	
<b>Total</b>	<b>2,737</b>	<b>100.0</b>	<b>400 800</b>	<b>18,460</b>	<b>100.0</b>	<b>2,500 5,000</b>

Source: Crash files and DWI Citation Tracking file

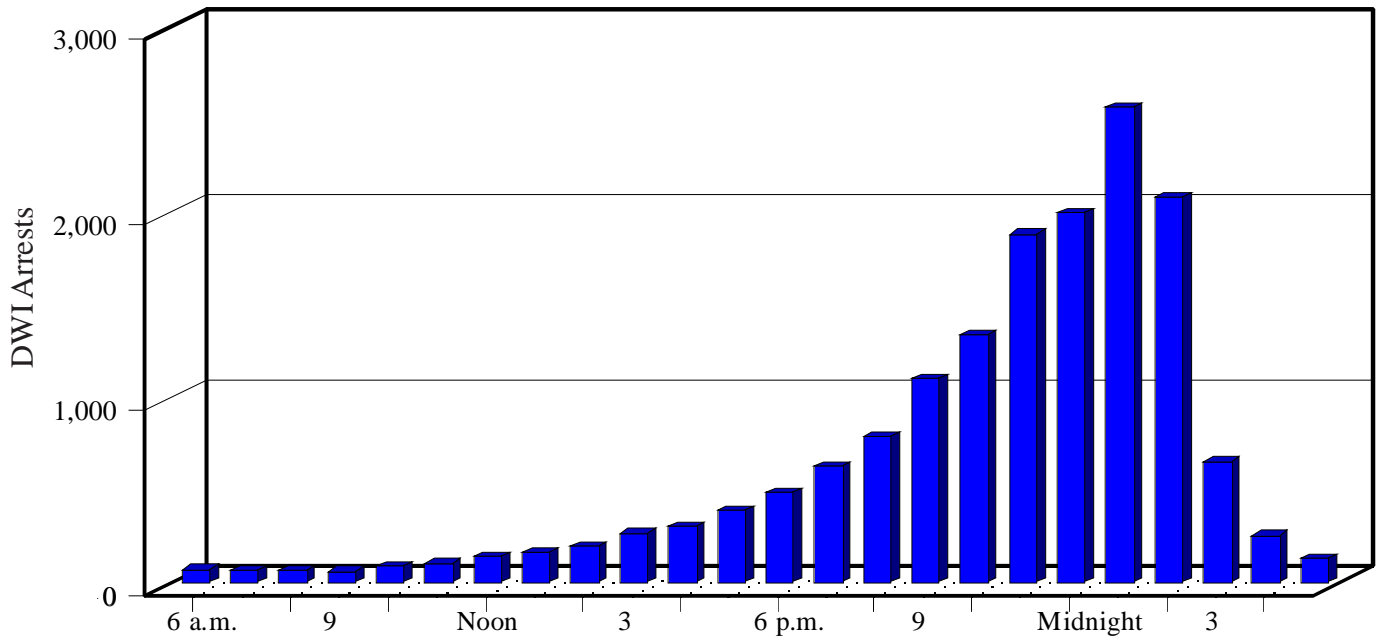
◆ For this table, each day was considered to run from 6:00 a.m. to 5:59 a.m. the following morning.

## Alcohol-involved Crashes and DWI Arrests by Agency, 2005

Agency	Crashes		Crashes	Arrests		Arrests
	Total	Percent		Total	Percent	
Albuquerque PD	661	24.2		5,495	29.8	
State Police	522	19.1		3,448	18.7	
County Sheriff	406	14.8		3,127	16.9	
Other City PDs	976	35.7		5,948	32.2	
Other	172	6.3		442	2.4	
<b>Total</b>	<b>2,737</b>	<b>100.0</b>	<b>500 1,000</b>	<b>18,460</b>	<b>100.0</b>	<b>3,000 6,000</b>

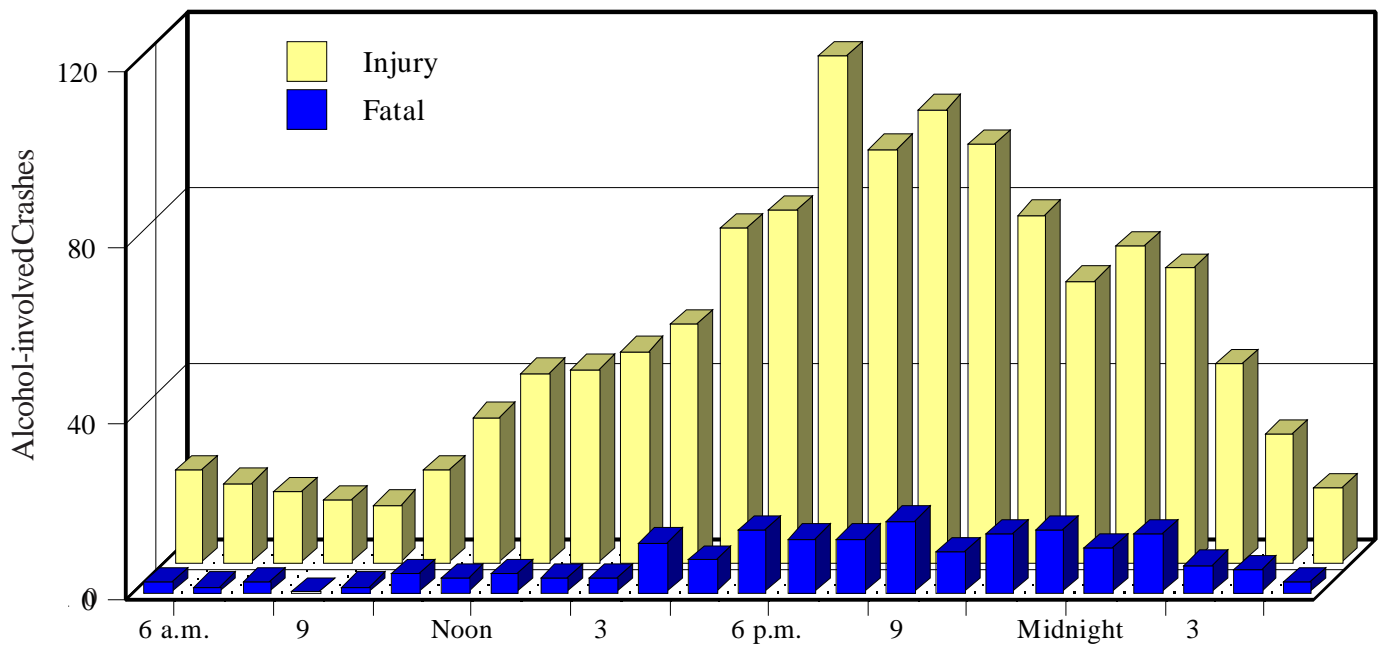
Source: Crash files and DWI Citation Tracking file

**DWI Arrests by Hour of the Day\*, 2005**



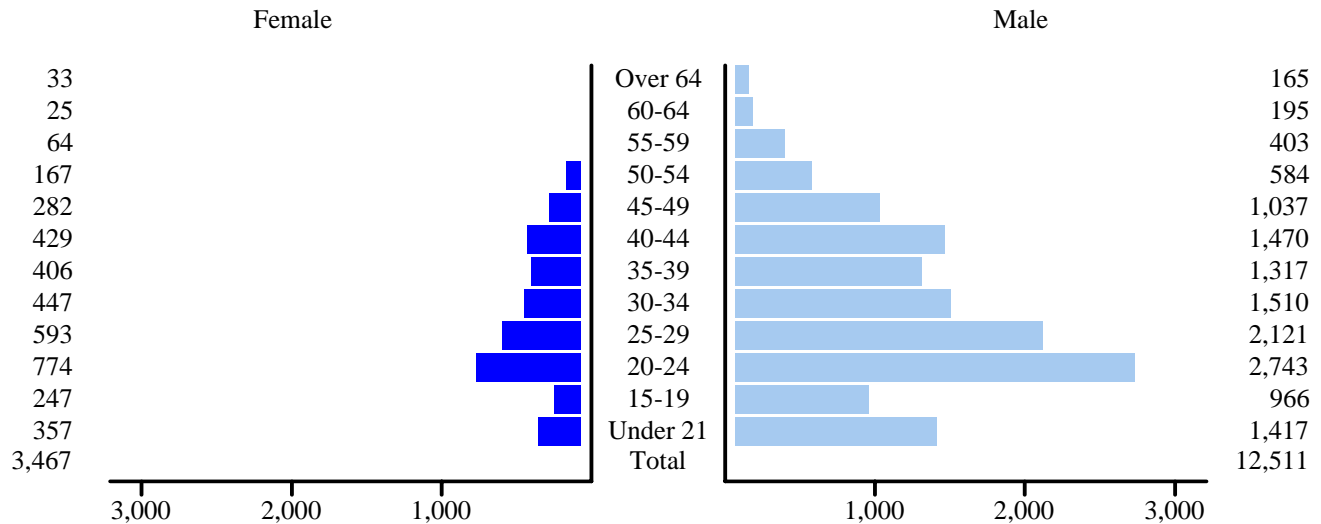
\* Arrests with missing time information are excluded from this table.  
Source: DWI Citation Tracking file

**Alcohol-involved Crashes by Hour and Severity, 2005**



Source: Crash files

**New Mexico DWI Arrests by Age and Sex, 2005**



Source: DWI Citation Tracking file

**Alcohol-involved Crashes and DWI Convictions by Driver Age and Sex, 2005**

Age	Severe Crash Drivers <sup>1</sup>				DWI Conv.	Rates <sup>2</sup>		Licensed Drivers
	Fatal Male	Fatal Female	Injury Male	Injury Female		Severe Alcohol Crashes	DWI Conv.	
Under 15	0	1	1	0	0	*	*	40
15-19	13	2	108	37	639	2.33	9.31	68,667
20-24	28	10	206	68	2,725	2.65	23.16	117,677
25-29	19	7	138	41	2,202	1.76	18.93	116,321
30-34	11	2	94	34	1,583	1.23	13.85	114,281
35-39	17	6	97	31	1,401	1.31	12.18	115,042
40-44	10	4	95	31	1,488	1.05	11.20	132,914
45-49	12	2	71	22	1,063	0.78	7.73	137,447
50-54	14	3	55	16	616	0.68	4.75	129,778
55-59	2	0	28	5	397	0.30	3.41	116,260
60-64	4	1	16	5	149	0.30	1.72	86,680
Over 64	6	1	15	6	146	0.15	0.78	187,151
<b>Total</b>	<b>136</b>	<b>39</b>	<b>924</b>	<b>296</b>	<b>12,409</b>	<b>1.06</b>	<b>9.38</b>	<b>1,322,258</b>
<b>Under 21</b>	<b>18</b>	<b>4</b>	<b>148</b>	<b>52</b>	<b>1,087</b>	<b>2.43</b>	<b>11.88</b>	<b>91,477</b>

Sources: Crash files and Driver History file

1 Severe crashes are those resulting in death or injury.

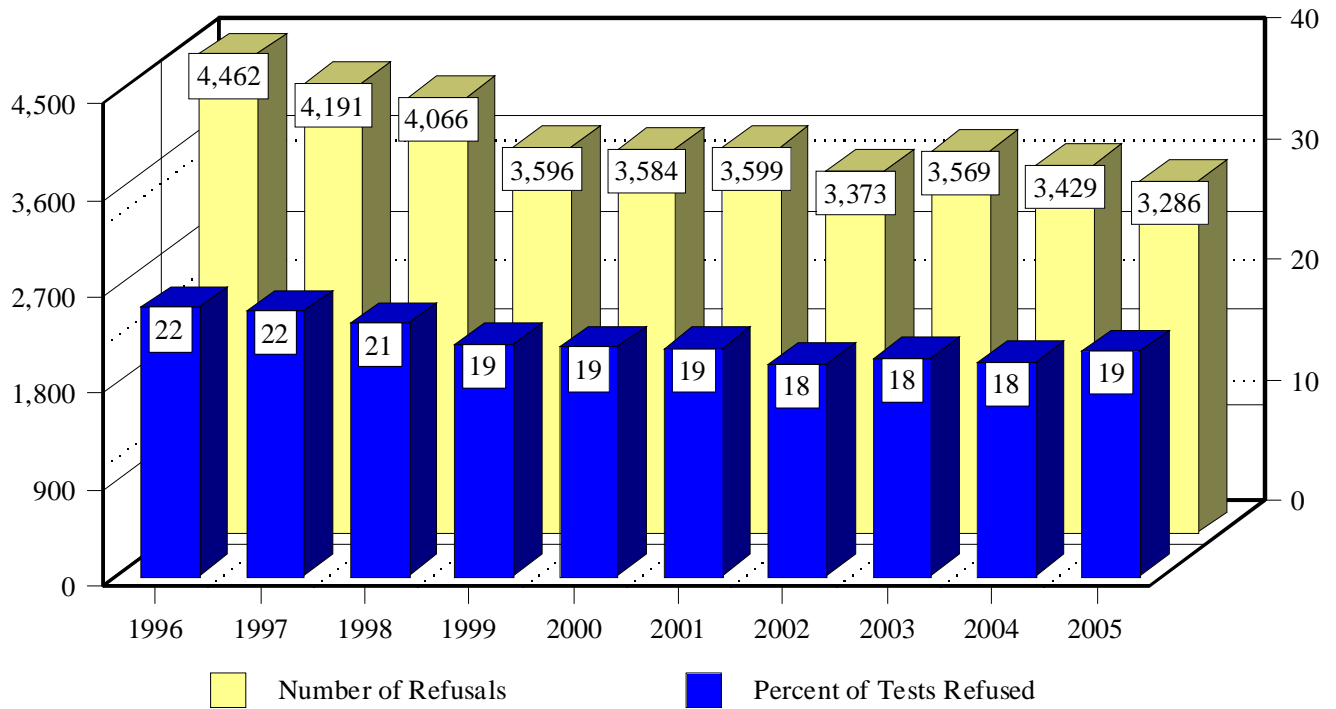
2 Rates are per 1,000 licensed drivers.

\* Due to the low number of licensed drivers under 15 years old the rates for this age group are not informative.

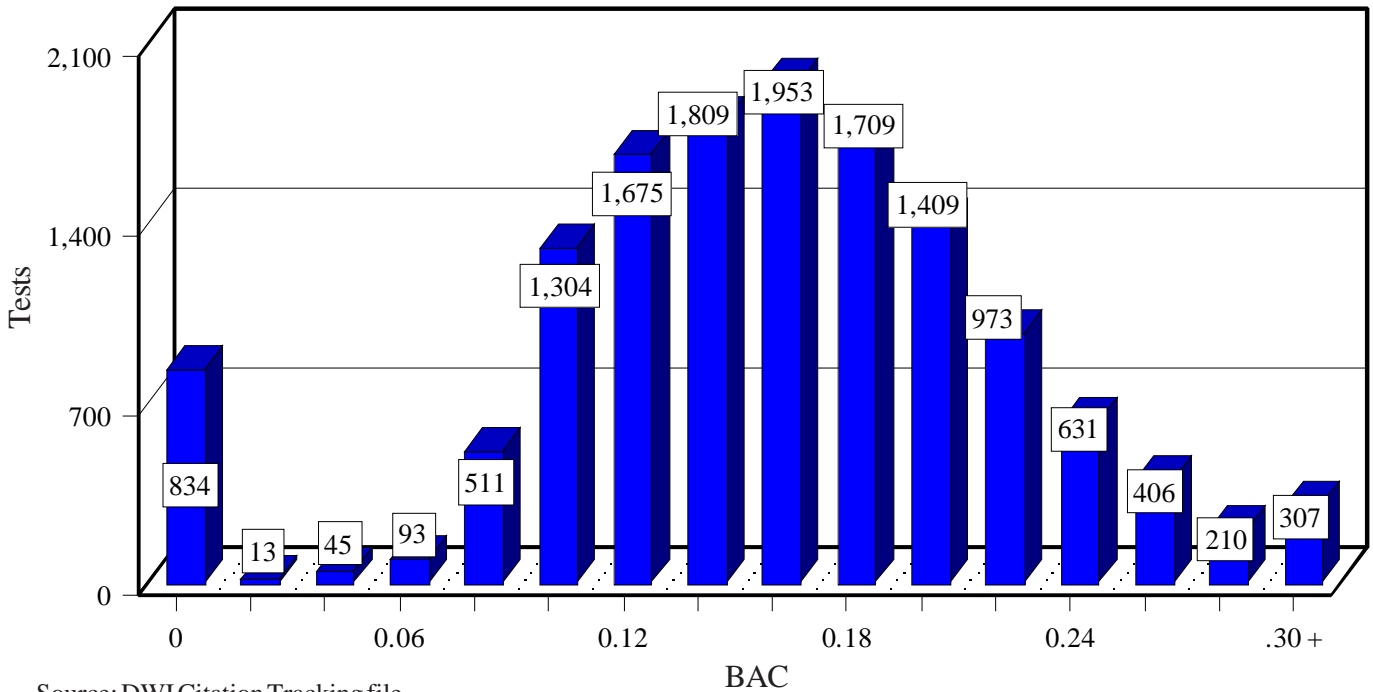
- ◆ These are drivers or pedestrians in crashes who reportedly had been drinking.
- ◆ People under the legal drinking age of 21 accounted for 8.8 percent of the DWI convictions in 2005.
- ◆ See explanation of conviction counts on page 14.

# BAC TESTS

## BAC Test Refusals, 1996-2005



## BAC Test Results, 2005



Source: DWI Citation Tracking file

- ◆ The mean BAC (Blood Alcohol Concentration) result was 0.16, double the legal limit for drivers over 21. This average excludes tests with a result of 0.0.

## Mean Number of Days to Court Disposition by County, 2005

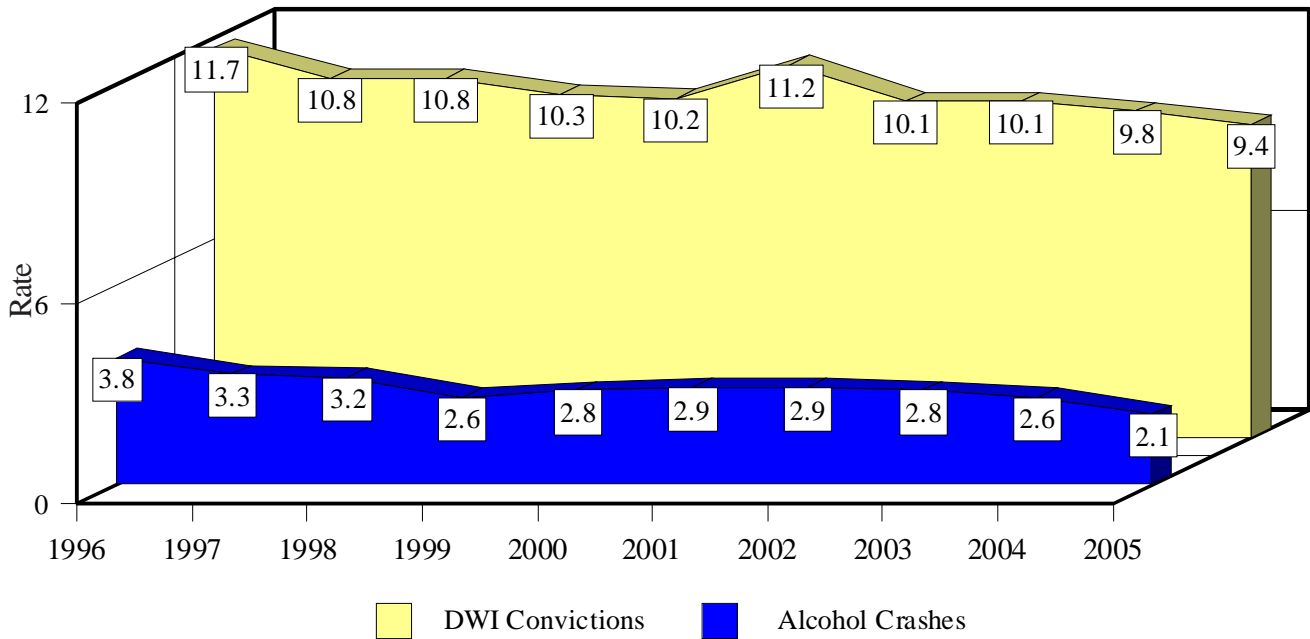
County	Total Arrests	Percent Crash Involved <sup>1</sup>	Mean BAC <sup>2</sup>	Citations Resolved <sup>3</sup>		Mean Days <sup>4</sup>	
				DWI Conviction	Dismissal	DWI Conviction	Dismissal
Bernalillo	6,545	14	0.15	3,257	1,696	172	162
Catron	38	2	0.16	29	1	78	188
Chaves	257	27	0.16	210	20	67	97
Cibola	397	11	0.18	241	80	104	161
Colfax	122	14	0.17	65	12	81	86
Curry	342	12	0.15	179	31	115	154
De Baca	8	25	0.13	4	1	55	46
Doña Ana	1,693	13	0.16	947	69	107	127
Eddy	321	22	0.16	220	31	81	140
Grant	243	18	0.16	152	46	83	102
Guadalupe	53	20	0.15	37	7	76	121
Harding	5	0	0.20	4	0	67	0
Hidalgo	100	11	0.14	75	10	78	87
Lea	305	18	0.16	214	28	62	106
Lincoln	253	19	0.15	175	32	76	168
Los Alamos	57	33	0.16	38	3	111	128
Luna	198	12	0.16	139	28	91	107
McKinley	937	14	0.18	550	230	77	114
Mora	30	13	0.14	21	5	94	199
Otero	457	10	0.15	312	57	85	90
Quay	81	9	0.16	59	12	64	117
Rio Arriba	468	21	0.17	307	50	69	145
Roosevelt	138	13	0.15	101	11	67	138
Sandoval	635	15	0.17	354	114	131	166
San Juan	1,794	12	0.17	1,372	198	104	137
San Miguel	314	12	0.16	215	39	108	141
Santa Fe	1,490	18	0.16	846	236	94	182
Sierra	105	11	0.16	49	18	135	235
Socorro	217	15	0.16	141	25	107	131
Taos	244	30	0.19	127	74	95	88
Torrance	112	15	0.17	87	6	82	107
Union	38	15	0.13	19	14	55	55
Valencia	363	23	0.16	201	102	81	112
Total	18,360	15	0.16	10,747	3,286	118	149

Source: DWI Citation Tracking file

- 1 This is the percentage of citations that were issued after a traffic crash brought the DWI incident to police attention.
- 2 Only citations for which a BAC was determined are included; citations for which the offender refused to submit to a BAC test are excluded.
- 3 These are citations issued in 2005 for which results were available by July 2006. The conviction counts differ from those in other tables because these are based on citations issued in 2005 as opposed to convictions handed down in 2005. The resulting convictions or dismissals could have been decided in 2006.
- 4 These are the average number of days from the date of the citation to the date of any court disposition as of July 2006. For example, the 3,257 convictions in Bernalillo County were decided on average within 172 days after the citation.

# TRENDS

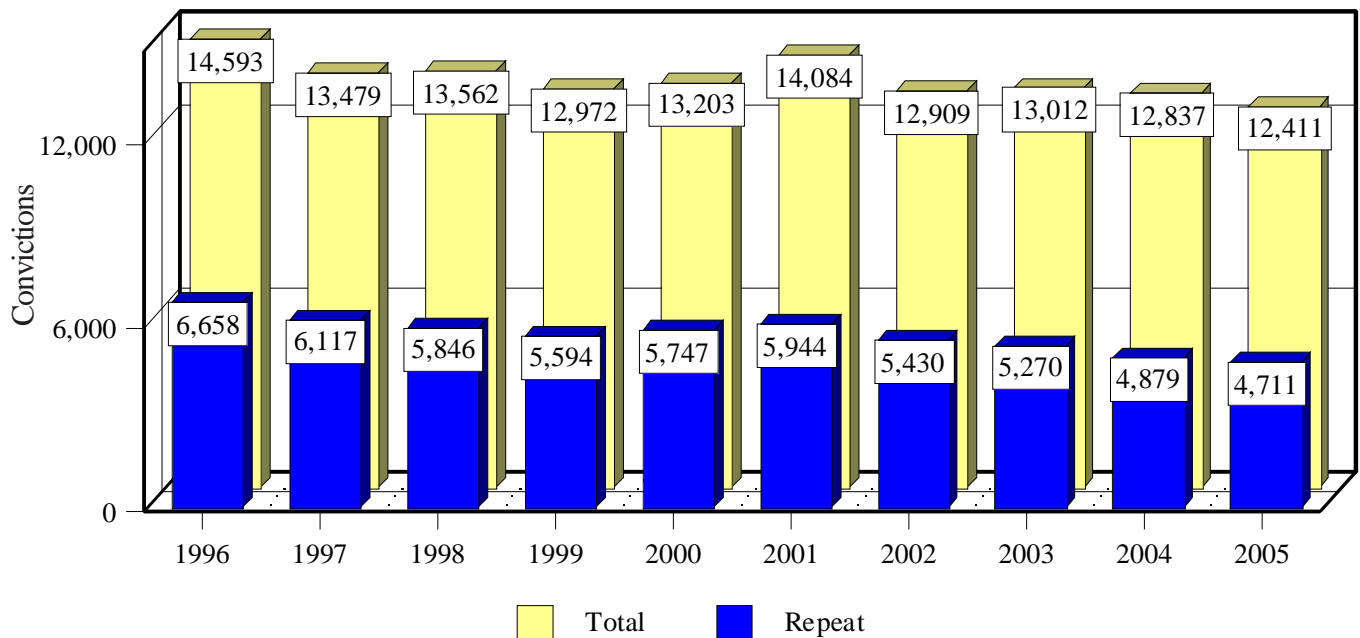
## DWI Conviction Rates and Alcohol-involved Crash Rates, 1996-2005



Sources: Driver History file and Crash files

- ◆ The rates are incidents (convictions or crashes) per 1,000 licensed drivers. See page 14 for a note about convictions. The rate of alcohol-involved crashes has decreased 45% from 1996 to 2005.

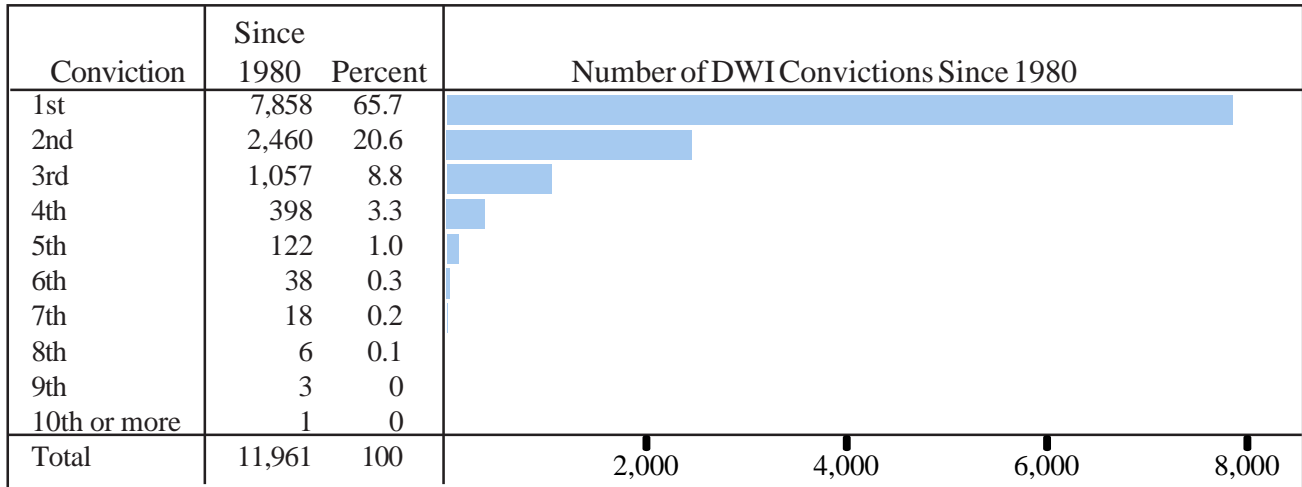
## Repeat and Total DWI Convictions, 1996-2005



Source: Driver History file

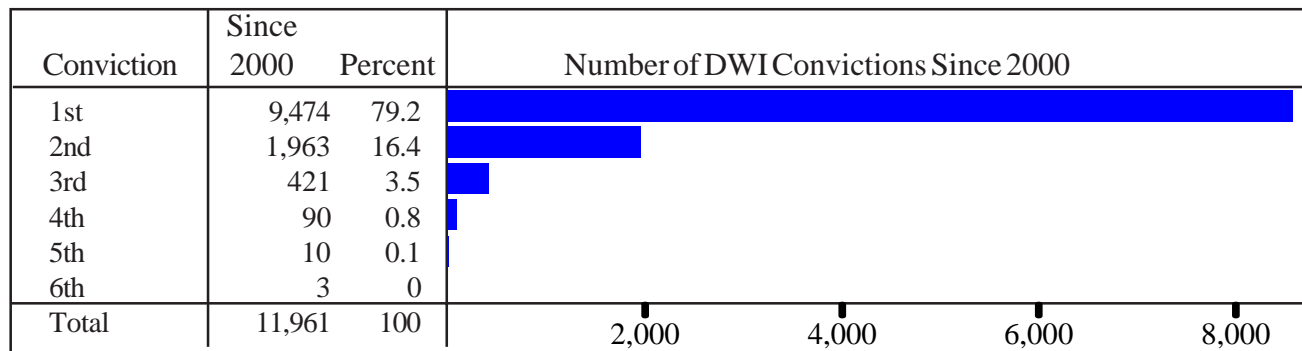
# REPEAT OFFENDERS

## Lifetime DWI Convictions for Drivers Convicted of DWI in 2005



Source: Driver History file

## DWI Convictions in the Last Five Years for Drivers Convicted of DWI in 2005



Source: Driver History file

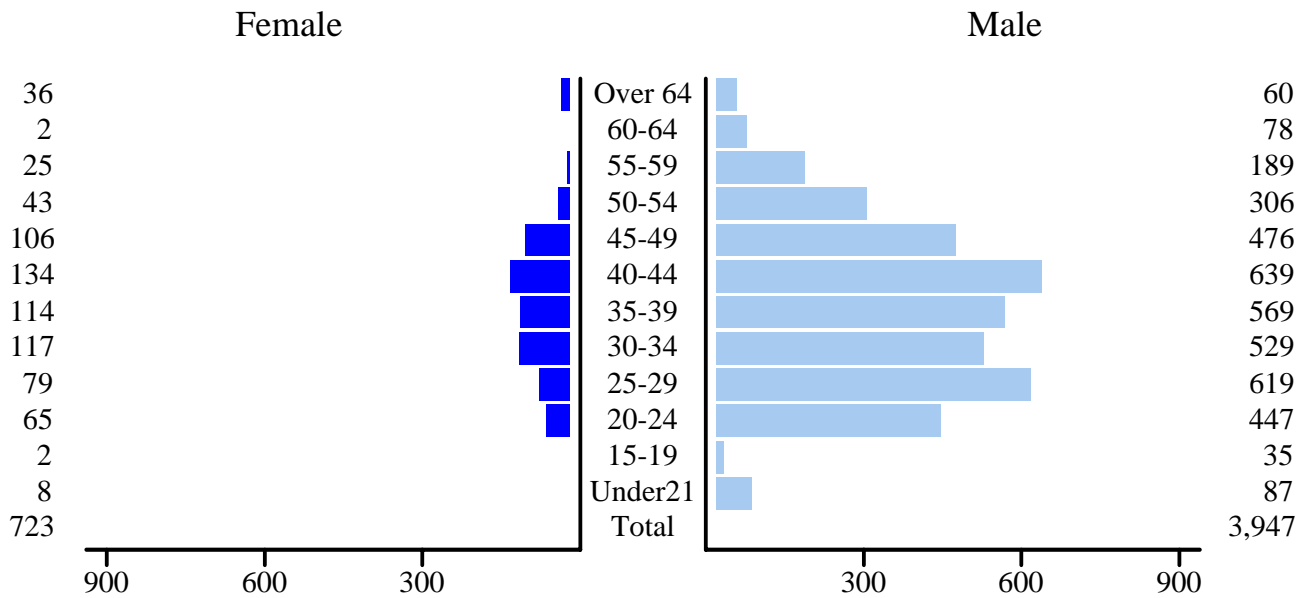
- ◆ There were 11,961 people convicted of DWI in 2005. Of those, 9,474 had not been convicted since 2000, and 7,858 had not been convicted since 1980 (1,556 had been convicted at least once between 1980 and 2000). The number of repeat convictions (4,711, see chart on page 13) is *not* equal to the total minus the number of first convictions, because some people were convicted more than once in 2005. Only their last conviction is included in the table above, while all repeat convictions are included in the chart on the next page.

**Conviction note:** Unless otherwise noted, conviction counts in this report are based on convictions handed down in 2005, and are only comparable to counts since the 1994 edition of this report. The citations which resulted in these convictions could have been issued before 2005. Due to the sometimes lengthy period between citation and conviction (see table on page 12), counting convictions resulting from citations issued during a particular year (e.g., 2005) would result in convictions after the publication of this report never being counted. By counting convictions regardless of citation date, all convictions are included.



# REPEAT OFFENDERS

## DWI Repeat Convictions by Age and Sex, 2005



◆ See page 14 for a note about convictions.

## Repeat DWI Convictions by NMDOT Districts\*, 1996 - 2005

Year	District 1	District 2	District 3	District 4	District 5	District 6	State
1996	831	1,062	1,744	384	1,598	1,006	6,658
1997	733	1,019	1,448	371	1,542	971	6,117
1998	635	936	1,631	331	1,380	914	5,846
1999	595	937	1,566	324	1,324	823	5,594
2000	670	911	1,455	310	1,591	784	5,747
2001	748	830	1,839	293	1,547	676	5,944
2002	680	672	1,654	308	1,511	587	5,430
2003	705	680	1,572	264	1,389	653	5,270
2004	668	615	1,105	302	1,384	801	4,879
2005	620	554	1,340	245	1,333	614	4,711

\* These Districts are based on counties, with the following definition: **District 1:** Doña Ana, Grant, Hidalgo, Luna, Sierra and Socorro; **District 2:** Chavez, Curry, De Baca, Eddy, Lea, Lincoln, Otero and Roosevelt; **District 3:** Bernalillo and Valencia; **District 4:** Colfax, Guadalupe, Harding, Mora, Quay, San Miguel and Union; **District 5:** Los Alamos, Rio Arriba, San Juan, Santa Fe, Taos and Torrance; **District 6:** Catron, Cibola, McKinley and Sandoval.

# INDEX & SOURCES

---

Age	3, 10, 15	Economic impact	3
Agency	8	Fatalities	6, 7
Arrests	8, 9, 10	Hour	9
BAC tests	11	Laws	4, 5
BAC test refusal	11	Licensed drivers	6, 7, 10
Citations	8, 9, 10, 12	Mean BAC	12
Crash related	12	Mean days	12
City	7	Month	8
Contributing factors	2	Other drugs	2
Convictions	6, 7, 10, 13	Penalties	4, 5
Repeat convictions	13, 14, 15	Population	2, 3
County	3, 6, 12	Rates	2, 6, 7, 10, 13
Court	12	Repeat convictions	13, 14, 15
Day	8	Sex	10, 15
Days to disposition	12	Sober people	3
District	15	Under 18	3
DWI crashes		Under 21	10, 15
All	8, 9, 13		
Fatal or Injury	6, 7, 10, inside back cover		

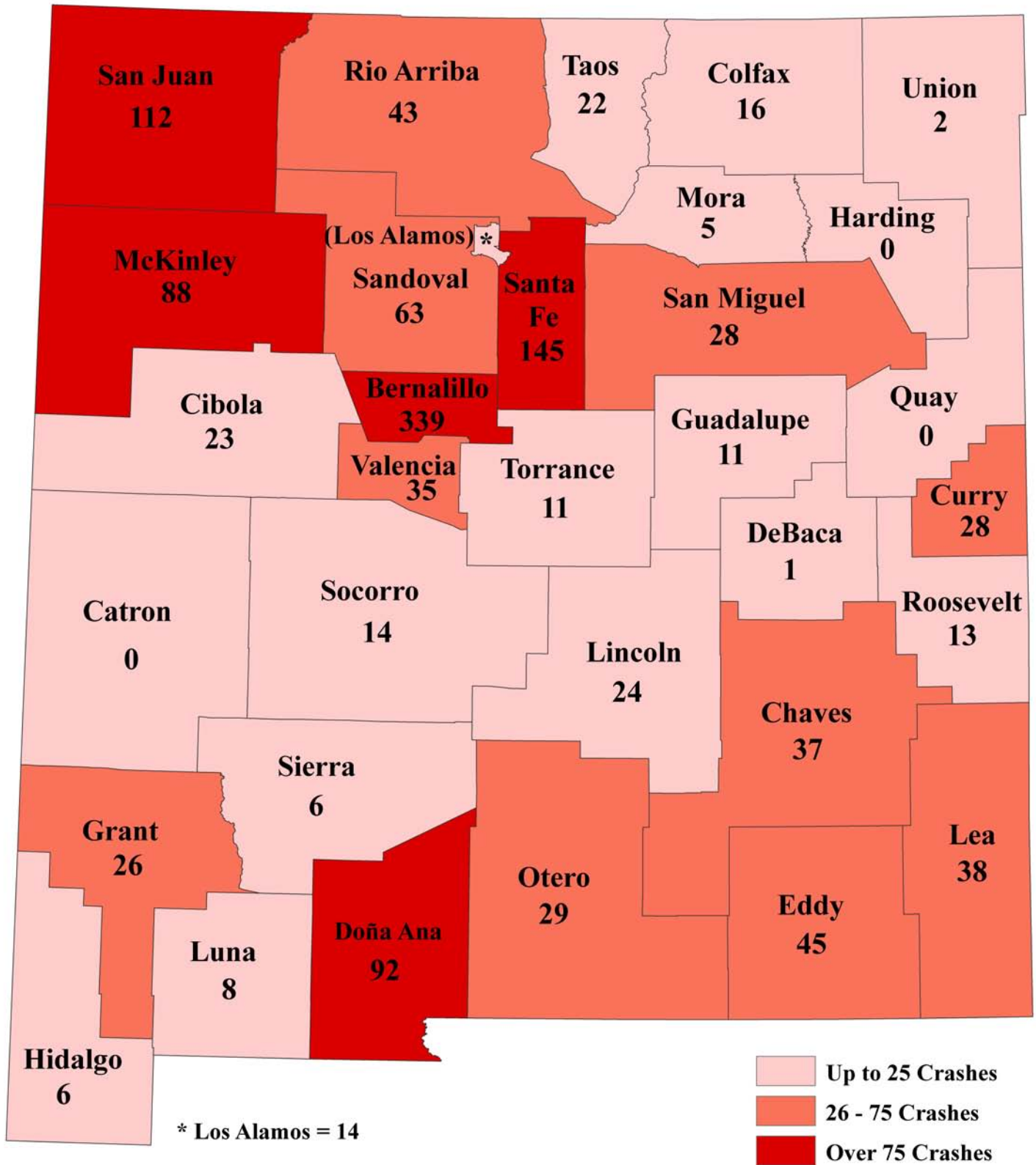
## Source data are noted below each table. The data sources are:

<b>BAC results</b>	The Blood Alcohol Content (BAC) data for the chart on page 11 are from the Motor Vehicle Division's DWI Citation Tracking file (see below).
<b>Crash files</b>	Information from crash reports are submitted by the many law enforcement agencies in the state, compiled and processed by the NMDOT, Transportation Statistics Bureau and then reprocessed by the Division of Government Research, University of New Mexico.
<b>Driver History file</b>	Driver's license and conviction data maintained by the Motor Vehicle Division. Conviction data are current as of July 2006.
<b>DWI Citation Tracking file</b>	Data from all DWI citations submitted to, and maintained by, the Motor Vehicle Division. BAC test results in this file generally include only breath tests. Data are as of July 2006.
<b>Fatality Analysis Reporting System</b>	Database of all fatal crashes on public roads in the United States. This file is maintained by the National Highway Traffic Safety Administration
<b>Licensed drivers</b>	Counts are as of July 2006 from the Driver History file maintained by the Motor Vehicle Division.
<b>Population</b>	Estimates are from the U.S. Census Bureau.

The Division of Government Research provides a wide range of data processing and analysis services. This report presents a portion of the data available concerning DWI in the state of New Mexico. These data are processed by DGR, but owned by the NM Department of Transportation. Requests for further information should be directed to Traffic Safety Bureau at the address inside the front cover.

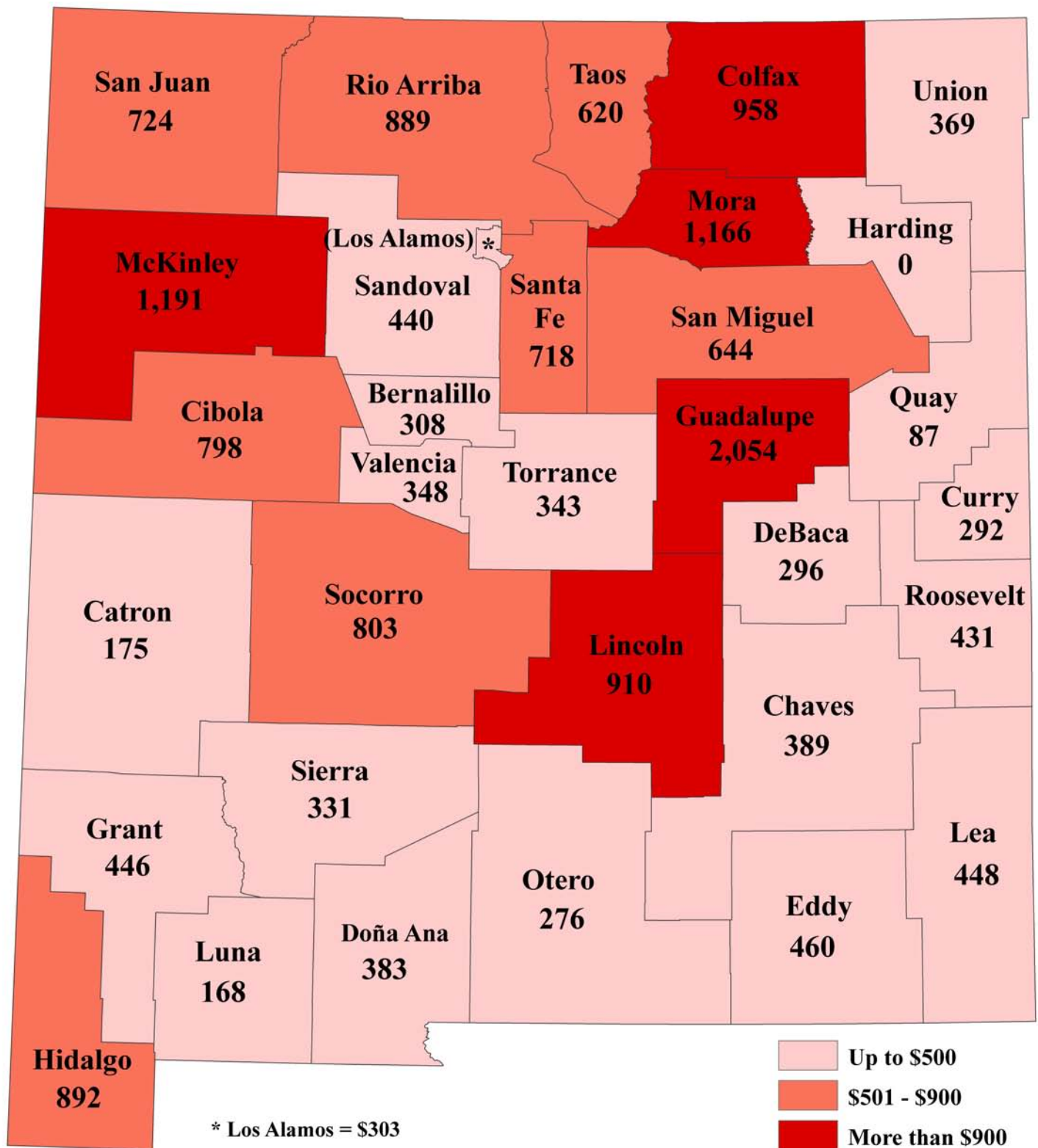
Several people at DGR are responsible for the data and analysis included in this report. Bich-Hanh Nguyen is Acting Manager of DGR. This report was produced by Annaliese Mayette with assistance from Susan W. Bucklin and Schuyler Smith.

## Number of Fatal or Injury 'DWT' Crashes, 2005



A 'DWT' Crash is a crash in which at least one driver is alcohol-involved.

## Per Capita Cost Estimates of Alcohol-involved Crashes, 2005



DWICost estimates based on FHWA economic loss formulae  
 Population estimates are from July 2005  
 New Mexico's cost estimate is \$477 Per capita