

D **r** **i** **v** **i** **n** **g**
W **h** **i** **l** **e**
I **m** **p** **a** **i** **r** **e** **d**



NewMexico 2003



New Mexico DEPARTMENT OF
TRANSPORTATION
MOBILITY FOR EVERYONE

**A MESSAGE FROM:
RACHEL O'CONNOR, DWI COORDINATOR
OFFICE OF THE GOVERNOR**



The problem of drunk driving is a challenge requiring the relentless commitment of my colleagues, federal and state transportation officials, law enforcement, community advocates and organizations, the media and the general public. DWI statistics show we have a tough job ahead. I'm confident that Governor Richardson's initiatives and our commitment will reduce death and injury due to DWI in the State of New Mexico.

As a leader for the nation, New Mexico has been selected by the National Highway Traffic Safety Administration to develop a comprehensive impaired driving plan that will serve as a model for other states. The Traffic Safety Bureau of the New Mexico Department of Transportation, law enforcement agencies, and partnering organizations have made progress in reducing alcohol related traffic fatalities and injuries.

New Mexico is taking a comprehensive approach to drive down the number of alcohol related fatalities and injuries. A full-time officer project is underway in five counties with the highest DWI crash and fatality rates. The number of Super Blitz periods held in one year increased from four to seven, thereby, increasing the visibility of law enforcement, and expanding DWI checkpoints and saturation patrols statewide. Increased media and public awareness campaigns promote law enforcement activities and educate the public about the severe consequences associated with DWI. The penalty for providing alcohol to a minor has been elevated to a fourth degree felony and went into effect July 2004. New Mexico has developed a Mobile Strike Unit to hold bars and restaurants accountable for sales to minors and intoxicated patrons. New Mexico has also become a leader in using technology to address recidivism, and currently has more Ignition Interlocks installed per capita than any other state in the country.

Our mission is clear and those involved in our safety system accept the opportunity to serve as a leader for the nation. The Governor's 2005 agenda includes a progressive legislative agenda and many other initiatives set forth in the Governor's DWI Multi-Agency Plan.

The University of New Mexico, Division of Government Research, produces this "Driving While Impaired" report for the New Mexico Department of Transportation. The report provides statistical information that contributes to the impaired driving plan and DWI initiatives conducted statewide.

FORMOREINFORMATIONCONTACT:

New Mexico Department of Transportation
Programs Division
Traffic Safety Bureau
505-827-0427
1-800-541-7952

On the Cover:

The cover photo shows the Bernalillo County Sheriff's Office Traffic Unit Deputies (from the left: Deputies J. Kingsbury, C. Sevier, T. Lujan, R. Castillo, R. Azbill, P. Chavez, G. Garcia, E. LaCompte, and J. Parkins). These deputies are responsible for traffic enforcement, investigating traffic fatalities, and DWI enforcement.
Photo by Deputy R. Lind.

DWI in New Mexico

is a publication of the

New Mexico Department of Transportation
Programs Division
Traffic Safety Bureau

P.O. Box 1149
Santa Fe, NM 87504-1149
(505) 827-0427

<http://www.unm.edu/~dgrint/tsb.html>

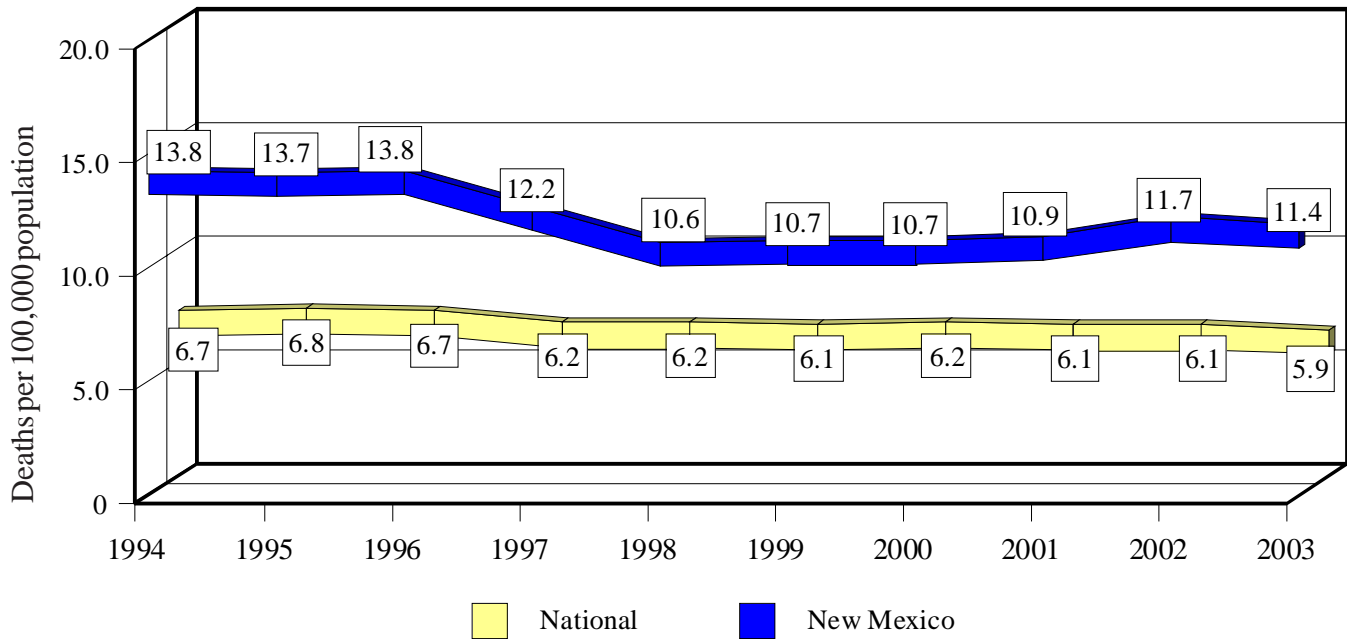
CONTENTS

Impact on New Mexico	2
Laws	4
Where	6
When	8
Who	10
BAC Tests	11
Case Results	12
Trends	13
Repeat Offenders	14
Index and Sources	16
Per Capita Costs of Crashes Map	Back Cover

The Traffic Safety Bureau of the New Mexico Department of Transportation (NMDOT) develops programs to address traffic issues in the state. The mission of the Bureau is to continuously reduce traffic-related fatalities, injuries and crashes. Program initiatives include education, enforcement, regulation, legislation, prevention, screening and treatment, and public information. The Bureau works in partnership with New Mexico law enforcement agencies statewide to enforce traffic safety laws.

Note: The 1999 crash file contains 15% fewer crashes than the 1998 file. This may be due to problems in implementing the new system after the old system failed, or to under-reporting. Care should be used when interpreting differences between 1999 and other years in this report.

Alcohol-involved Fatality Rates, 1994-2003



Source: Fatality Analysis Reporting System, the Census Bureau and Crash files

- ◆ In 2003 both New Mexico and National rates decreased.

Contributing Factors in Fatal Crashes, 2003

Contributing Factor	Count	Percent	Percent of Involvements
Alcohol involved	193	33.4	33.4
Excessive speed	188	32.5	32.5
Driver inattention	184	31.8	31.8
Other	110	19.0	19.0
Drove left of center	75	13.0	13.0
Other improper driving	73	12.6	12.6
Mechanical defects	25	4.3	4.3
Failure to yield	23	4.0	4.0
Disregard traffic control	17	2.9	2.9
Improper turn	17	2.9	2.9
Improper overtaking	10	1.7	1.7
Follow too close	5	0.9	0.9
Total	578		

Source: Crash files

- ◆ These are counts of all factors reported to have contributed to fatal crashes. These are *not* the same thing as fatal crash counts. A single crash often involves more than one vehicle, and each vehicle may be affected by more than one factor. The percents shown are the percents of vehicles in fatal crashes which were affected by each of the contributing factors. For these reasons the total here is higher than in other tables presenting fatal crash information, and the percentages sum to more than 100.

Victims of Alcohol-involved Crashes, 2003

County	People in Crashes			Impact (in dollars) ²		2003 Population ³
	Total	Sober ¹	Under 18	Total (000)	Per capita	
Bernalillo	2,728	1,174	682	219,002	377	581,442
Catron	7	0	2	1,523	446	3,415
Chaves	160	55	50	19,296	318	60,591
Cibola	145	34	28	26,128	988	26,453
Colfax	59	12	9	12,259	872	14,051
Curry	134	54	40	13,291	292	45,440
De Baca	1	0	0	448	214	2,091
Doña Ana	591	208	128	82,680	454	182,165
Eddy	192	62	46	24,590	478	51,470
Grant	125	38	35	17,960	602	29,818
Guadalupe	23	4	2	6,756	1,477	4,574
Harding	0	0	0	0	0	747
Hidalgo	5	2	0	1,443	276	5,234
Lea	166	60	37	21,086	380	55,504
Lincoln	105	39	14	14,263	702	20,322
Los Alamos	19	3	6	1,981	105	18,802
Luna	66	20	21	7,621	296	25,732
McKinley	624	243	138	89,423	1,232	72,555
Mora	24	7	2	7,551	1,448	5,216
Otero	146	40	21	22,502	361	62,371
Quay	16	2	1	5,313	553	9,605
Rio Arriba	238	70	43	39,323	965	40,731
Roosevelt	56	23	17	8,876	490	18,107
Sandoval	314	98	52	47,594	482	98,786
San Juan	655	228	126	82,247	673	122,272
San Miguel	111	23	20	22,658	764	29,670
Santa Fe	889	375	180	105,810	776	136,423
Sierra	25	0	4	7,564	576	13,125
Socorro	100	32	19	18,104	996	18,178
Taos	120	29	26	25,981	831	31,269
Torrance	32	8	4	7,564	450	16,802
Union	16	1	4	2,063	541	3,814
Valencia	268	105	69	42,435	626	67,839
Total	8,160	3,049	1,826	1,005,333	536	1,874,614

Source: Crash files

- 1 Sober people are drivers, passengers and pedestrians who were involved in a crash with a driver or pedestrian who had been drinking.
- 2 Impact is the cost of DWI related crashes in New Mexico based on Federal Highway Administration estimation formulae (*The Costs of Highway Crashes*, FHWA-RD-91-055, Federal Highway Administration, 1991). The figures are based on 1988 dollars, adjusted for inflation to 2003 dollars. **These are estimates, not actual dollar amounts.** Included are direct costs such as lost wages and medical expenses, and indirect "willingness to pay" estimates of lost quality of life.
- 3 Population estimates are for July 2003 and are from the Census Bureau.

DWI Penalties in New Mexico*

Offense	Administrative License Revocation
Implied Consent Violation (Driving with BAC over legal limit or refusal to take BAC test)	Age under 21 and BAC at least .02: 6 months for first offense Age 21 or older and BAC at least .08: 90 days for first offense CDL at least .04: 90 days for first offense Limited license for first offense after 30-day revocation §66-5-35B ¹ Refusal: 1 year (no limited license) Any subsequent offense: 1 year Ignition interlock license available ²

Note that this is **not** a criminal offense, and the resulting license revocation is an administrative, not a criminal penalty. Municipalities are prohibited from establishing *per se* BAC limits different from state limits (§66-8-102.2). Licenses remain revoked until offenders reinstate them. First offenders who did not refuse the BAC test may obtain limited licenses after a 30-day revocation.

Criminal Sanctions (Basic Sentence)					Aggravated ³
DWI Offense	Jail ⁴	Fines/Fees/Costs ⁵	License Revocation	Other	If convicted of ADWI
1st Misdemeanor §66-8-102E	Maximum: 90 days ⁴ Mandatory: 48 hours if offender fails to comply with sentence	Maximum: \$500 §66-8-102E License Fee: \$100 §66-5-33.1 Crime Lab Fee: \$65 §31-12-7A Community Fee: \$75 §31-12-7B DWI School: up to \$150 Alcohol Screening: \$100-\$200 Limited license: \$45 Interlock license fee: \$45 Interlock costs: \$960+/yr. Corrections fee: \$20	1 year (Unless DWI school is completed) §66-5-29A(2) Limited license available ¹ §66-5-35A Interlock license available ² §66-5-503	Mandatory: screening ⁶ DWI school §66-8-102E,K If ordered by court: 48 hours community service, treatment ⁶ §66-8-102E,K Interlock §66-8-102O Up to 1 yr probation	Mandatory: additional 48 hours jail §66-8-102D,E Interlock §66-8-102N
2nd Misdemeanor §66-8-102F	Mandatory: 96 hours Maximum: 364 days ⁴ Mandatory: 7 days if offender fails to comply with sentence	Maximum: \$1,000 §66-8-102F Mandatory: \$500 §66-8-102F(1) Fees and costs are the same as for first offense	1 year §66-5-29A(3) Interlock license available ² §66-5-503 No limited license §66-5-35B ¹	Mandatory: 48 hours community service, ignition interlock, screening ⁶ , treatment §66-8-102F(1),L,K,P If ordered by court: up to 5 years probation §66-8-102F	Mandatory: additional 96 hours jail, §66-8-102D, ignition interlock §66-8-102P
3rd Misdemeanor §66-8-102F	Mandatory: 30 days Maximum: 364 days ⁴ Mandatory: 60 days if offender fails to comply with sentence	Maximum: \$1,000 §66-8-102F Mandatory: \$750 §66-8-102F(1) Fees and costs are the same as for first offense	10 years if offender is convicted of DWI 3 times within any 10 year period. §65-5-5D Otherwise: 1 year. No limited license §66-5-35B ¹ Interlock license available ² §66-5-503	Mandatory: screening ⁶ treatment, ignition interlock §66-8-102L,K,P If ordered by court: probation, §66-8-102F In Albuquerque, Las Cruces, & Doña Ana & Torrance Counties vehicle forfeiture in civil action	Mandatory: additional 60 days jail §66-8-102D Ignition interlock §66-8-102P

* All section numbers (§...) refer to New Mexico Statutes Annotated, 1978

Criminal Sanctions (Basic Sentence) - continued				
DWI Offense	Jail ⁴	License Fines/Fees/Costs ⁵	Revocation	Other
4th or 5th 4th Degree Felony §66-8-102G	Mandatory: 6 mon (4th) 1 year for 5th §66-8-102G Maximum: 18 months (4th) ⁴ 2 years (5th) ⁴ §31-18-15G,H	Maximum: \$5,000 §31-18-15E(5) Fees and costs are the same as for first offense	Same as for third offense	Mandatory: treatment, screening ⁶ , ignition interlock §66-8-102K,M,P vehicle forfeiture in civil action as for 3rd
6th or subsequent 3rd Degree Felony §66-8-102L,J	Mandatory: 18mon (6th) 2 years for 7th+ §66-8-102L,J Maximum: 30 months (6th) ⁴ 3 years (7th+) ⁴ §66-8-102L,J	Maximum: \$5,000 §31-18-15E(5) Fees and costs are the same as for first offense	Same as for third offense	Mandatory: treatment, screening ⁶ , ignition interlock §66-8-102K,H,M,P vehicle forfeiture in civil action as for 3rd
Vehicular Homicide 3rd Degree Felony §66-8-101	Maximum: 6 years per offense ² §31-18-15A(4)	Maximum: \$5,000 §31-18-15E(4)	Depends on number of prior DWI offenses No Interlock license available	4 years extra jail time added for each prior DWI conviction in the past 10 years. §66-8-101D, including tribal convictions, §66-8-101E(2)
Driving While Revoked for DWI Misdemeanor §66-5-39	Mandatory: 7 days §66-5-39A Maximum: 364 days ⁴ §66-5-39A	Mandatory: \$300 §66-5-39A Maximum: \$1,000 §66-5-39A	1 year §66-5-39C	30 days immobilization of vehicle driven by offender. §66-5-39B vehicle forfeiture in civil action as for 3rd

Notes on DWI Convictions

- 1 **Limited license:** A limited license is restricted to driving to or from work or school or to attend court-ordered treatment and is available only to first offenders who took the breath or blood alcohol test.
- 2 **Interlock license:** An ignition interlock license is available to anyone who has had a DWI except for those who have killed someone while driving impaired. The penalty for driving without an interlock is the same as driving while revoked. The interlock license requires drivers to install interlocks on all cars they drive. Application for either of these licenses are available at <http://ipl.unm.edu/traf/pubs/mvd10792.pdf> or from the the Motor Vehicle Division.
- 3 Aggravated DWI is a conviction for DWI when the offender: (a) drove with a BAC (Blood Alcohol Concentration) of .16 or higher, (b) caused a person bodily injury while DWI, **or** (c) refused a BAC test when arrested.
- 4 Mandatory jail time must be served consecutively.
- 5 Fines and Fees do not include increased insurance costs, treatment, lost wages, towing and storage, court costs and attorney fees.
- 6 The judge *shall* sentence the offender to alcohol screening; the court will approve screening programs; the court does not have to order the offender to pay for it (§66-8-102K).
 ♦ A deferred sentence on a first offense *is considered* a first offense for the purposes of defining subsequent offenses (§66-8-102E).

Source: Institute of Public Law, UNM School of Law. Laws are available at IPL's website (<http://ipl.unm.edu/traf>).

Alcohol-involved Crashes and DWI Convictions by County, 2003

County	Crashes ¹				People Killed	People Injured	DWI Conv.	Rates ²		2003 Licensed Drivers
	Alcohol Fatal	% of all Fatal	Alcohol Injury	% of all Injury				Alcohol Crashes	DWI Conv.	
Bernalillo	27	50	500	7	31	786	3,077	1.3	7.8	393,996
Catron	2	67	1	4	3	3	22	0.9	7.0	3,160
Chaves	2	50	30	7	2	55	199	0.8	4.8	41,433
Cibola	8	67	33	17	9	60	303	2.6	19.2	15,810
Colfax	3	30	14	9	3	24	61	1.6	5.8	10,502
Curry	2	33	21	6	3	30	243	0.8	8.4	28,996
De Baca	0	0	1	5	0	1	10	0.6	5.9	1,695
Doña Ana	13	50	131	9	16	212	1,118	1.2	9.7	115,827
Eddy	3	21	40	11	4	57	267	1.2	7.3	36,615
Grant	1	20	30	12	1	48	180	1.4	8.2	22,085
Guadalupe	1	25	10	14	1	16	47	3.7	15.6	3,011
Harding	0	0	0	0	0	0	2	0	3.2	626
Hidalgo	1	33	2	5	1	2	29	0.8	7.8	3,724
Lea	5	45	30	8	5	49	375	0.9	9.9	37,784
Lincoln	2	67	24	12	2	40	154	1.6	9.6	16,017
Los Alamos	0	0	5	6	0	6	34	0.3	2.1	15,846
Luna	1	10	15	9	1	22	119	0.9	6.8	17,578
McKinley	18	53	120	23	21	221	771	3.7	20.7	37,284
Mora	1	25	8	17	1	8	46	2.6	13.3	3,458
Otero	4	31	35	10	4	57	313	1.0	8.3	37,733
Quay	3	43	4	5	4	8	70	0.9	9.4	7,425
Rio Arriba	9	69	58	21	11	122	383	2.4	13.5	28,403
Roosevelt	1	50	15	14	1	21	116	1.4	10.1	11,495
Sandoval	10	63	66	12	12	103	525	1.1	7.4	71,265
San Juan	23	62	135	14	26	249	1,377	2.2	18.9	72,861
San Miguel	5	63	24	10	7	36	254	1.6	14.2	17,853
Santa Fe	11	69	224	13	12	343	912	2.4	9.3	98,081
Sierra	3	50	10	18	3	16	95	1.4	10.2	9,273
Socorro	7	64	18	18	8	33	104	2.1	8.5	12,185
Taos	3	60	36	16	3	50	182	1.7	7.9	23,064
Torrance	5	63	6	6	7	15	108	1.0	10.2	10,555
Union	1	25	3	8	1	6	6	1.3	2.0	3,051
Valencia	9	64	72	21	11	113	378	1.8	8.4	45,214
Other							720			
Total	184	50	1,721	10	214	2,812	12,600	1.5	10.0	1,253,905

Sources: Crash files and Driver History file

¹ The crash percentages shown are the percent of all crashes which involved alcohol. For example, 50 percent of all Bernalillo County fatal crashes involved alcohol, and resulted in 31 fatalities.

² Rates are per 1,000 licensed drivers.

³ Severe crashes are those involving death or injury.

◆ DWI convictions are those handed down in 2003. The citations that resulted in these convictions could have been issued prior to 2003. See the note on page 15 for a complete explanation. Convictions are counted by county of driver residence, not the county in which the citation was issued. Driver residence county was determined by ZIP code. The 720 convictions received by drivers with missing, invalid, or out-of-state ZIP codes are shown as "Other" and are included in the total.

Alcohol-involved Crashes and DWI Convictions by City, 2003

City	Crashes ¹				People Killed	People Injured	DWI Conv.	Rates ²		2003 Licensed Drivers
	Alcohol Fatal	% of all Fatal	Alcohol Injury	% of all Injury				Severe ³ Alcohol Crashes	DWI Conv.	
Alamogordo	0	0	11	6	0	17	203	0.4	8.2	24,902
Albuquerque	25	51	482	7	28	759	3,015	1.3	7.9	380,184
Artesia	0	0	6	12	0	7	58	0.5	5.2	11,109
Aztec	0	0	2	5	0	4	108	0.2	10.3	10,437
Bayard	0	0	0	0	0	0	26	0	12.6	2,064
Belen	0	0	11	17	0	13	97	0.8	7.0	13,878
Bernalillo	1	100	1	7	1	3	73	0.3	11.9	6,132
Bloomfield	1	33	4	10	1	8	160	0.5	17.4	9,192
Bosque Farms	1	100	1	8	1	3	19	0.6	5.3	3,593
Carlsbad	1	100	12	7	1	15	192	0.6	8.1	23,584
Clayton	0	0	0	0	0	0	5	0	2.4	2,102
Clovis	2	50	13	4	3	18	223	0.6	8.4	26,588
Corrales	0	0	4	14	0	6	22	0.5	3.0	7,421
Deming	0	0	4	6	0	5	114	0.2	7.1	16,125
Española	2	100	40	14	2	79	157	3.9	14.6	10,725
Eunice	0	0	1	33	0	1	44	0.5	21.1	2,081
Farmington	4	67	51	9	4	79	542	1.6	16.0	33,817
Gallup	3	50	44	20	3	59	259	3.0	16.6	15,600
Grants	1	100	13	18	2	16	108	2.0	15.5	6,963
Hobbs	0	0	12	6	0	15	201	0.5	8.1	24,755
Jal	0	0	0	0	0	0	19	0	12.3	1,546
Las Cruces	5	56	73	7	6	118	664	1.1	9.3	71,591
Las Vegas	1	33	7	6	1	13	180	0.7	14.8	12,191
Lordsburg	1	100	0	0	1	0	21	0.4	8.0	2,610
Los Alamos	0	0	5	6	0	6	34	0.3	2.1	15,846
Los Lunas	2	67	16	20	2	33	229	0.7	9.5	24,035
Lovington	1	100	3	6	1	6	105	0.5	12.7	8,242
Milan	0	0	0	0	0	0	41	0	21.6	1,902
Portales	0	0	3	6	0	4	109	0.3	10.3	10,582
Raton	1	100	6	11	1	9	35	1.1	5.7	6,139
Rio Rancho	3	43	23	7	3	32	235	0.6	5.5	42,744
Roswell	0	0	20	6	0	36	171	0.5	4.7	36,456
Ruidoso	1	100	11	14	1	17	70	1.6	9.6	7,295
Santa Fe	4	100	115	11	4	181	810	1.4	9.8	82,450
Silver City	0	0	11	9	0	15	98	0.8	7.3	13,489
Socorro	0	0	6	19	0	11	73	0.9	10.4	7,025
Sunland Park	0	0	8	15	0	10	55	1.1	7.7	7,118
Taos	0	0	5	6	0	7	65	0.6	8.1	8,035
T or C	1	50	3	13	1	5	56	0.8	10.8	5,192
Tucumcari	0	0	0	0	0	0	60	0	10.9	5,520
Tularosa	0	0	1	25	0	1	43	0.3	12.2	3,525

Sources: Crash files and Driver History file

◆ The notes for the previous table apply here as well.

Alcohol-involved Crashes and DWI Arrests by Month, 2003

Month	Crashes		Crashes	Arrests		Arrests
	Total	Percent		Total	Percent	
January	276	7.9		1,702	8.4	
February	234	6.7		1,562	7.7	
March	302	8.6		1,727	8.5	
April	257	7.3		1,756	8.6	
May	319	9.1		2,008	9.9	
June	278	7.9		1,513	7.4	
July	316	9.0		1,565	7.7	
August	306	8.7		1,728	8.5	
September	286	8.2		1,733	8.5	
October	314	9.0		1,613	7.9	
November	328	9.4		1,806	8.9	
December	292	8.3		1,612	7.9	
Total	3,508	100.0	100 200 300	20,325	100.0	900 1,800

Source: Crash files and DWI Citation Tracking file

Alcohol-involved Crashes and DWI Arrests by Day of the Week, 2003

Day	Crashes		Crashes	Arrests		Arrests
	Total	Percent		Total	Percent	
Sunday	402	11.5		1,837	9.0	
Monday	346	9.9		1,574	7.7	
Tuesday	428	12.2		2,054	10.1	
Wednesday	455	13.0		2,371	11.7	
Thursday	437	12.5		2,983	14.7	
Friday	725	20.7		4,855	23.9	
Saturday	715	20.4		4,651	22.9	
Total	3,508	100.0	400 800	20,325	100.0	2,500 5,000

Source: Crash files and DWI Citation Tracking file

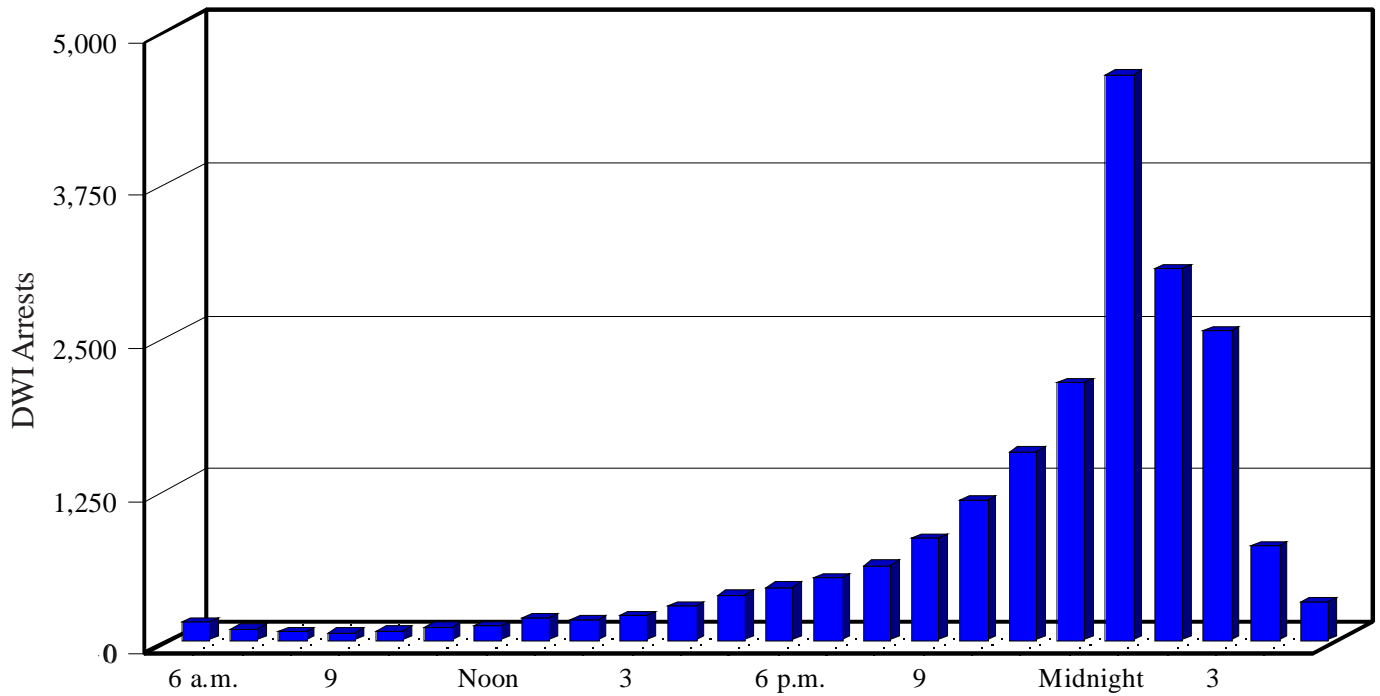
◆ For this table, each day was considered to run from 6:00 a.m. to 5:59 a.m. the following morning.

Alcohol-involved Crashes and DWI Arrests by Agency, 2003

Agency	Crashes		Crashes	Arrests		Arrests
	Total	Percent		Total	Percent	
Albuquerque Police	894	25.5		6,203	30.5	
State Police	771	22.0		4,335	21.3	
County Sheriff	537	15.3		3,121	15.4	
Other City PDs	1,084	30.9		6,218	30.6	
Other	222	6.3		448	2.2	
Total	3,508	100.0	400 800 1,200	20,325	100.0	2,500 5,000

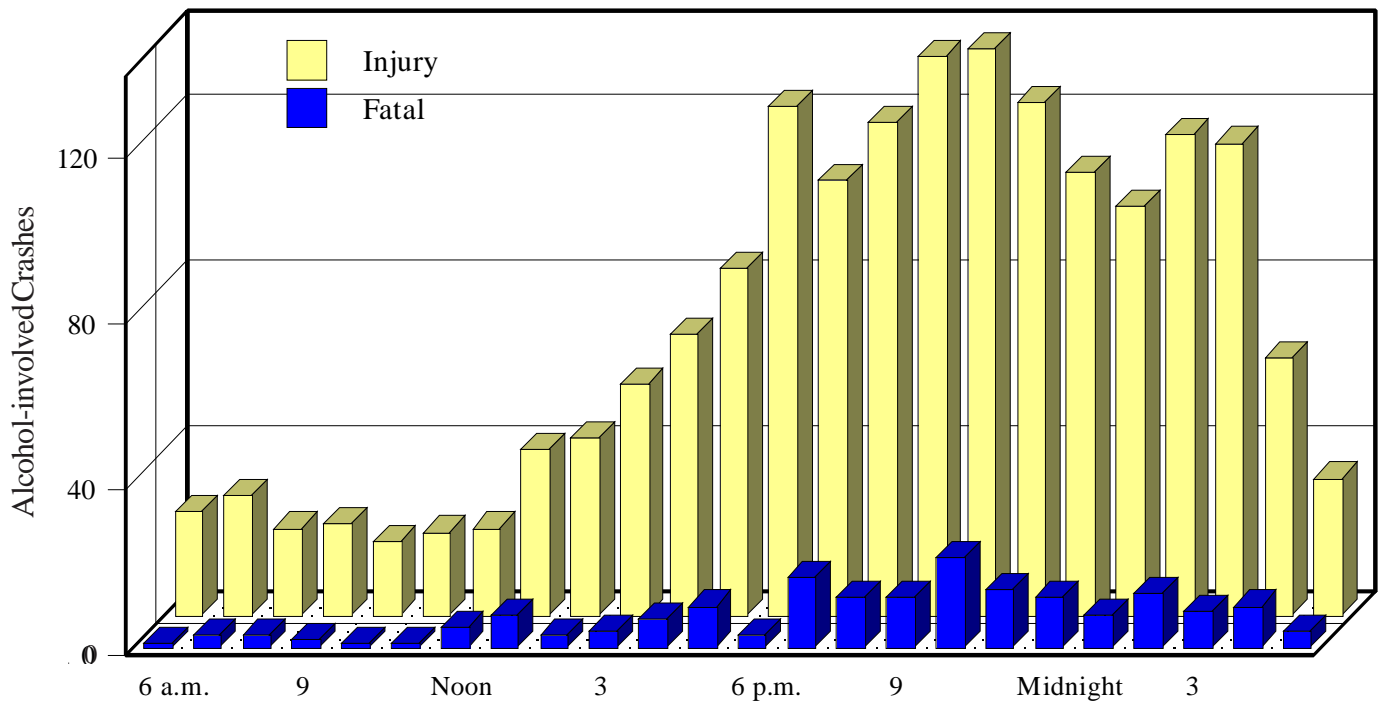
Source: Crash files and DWI Citation Tracking file

DWI Arrests by Hour of the Day, 2003



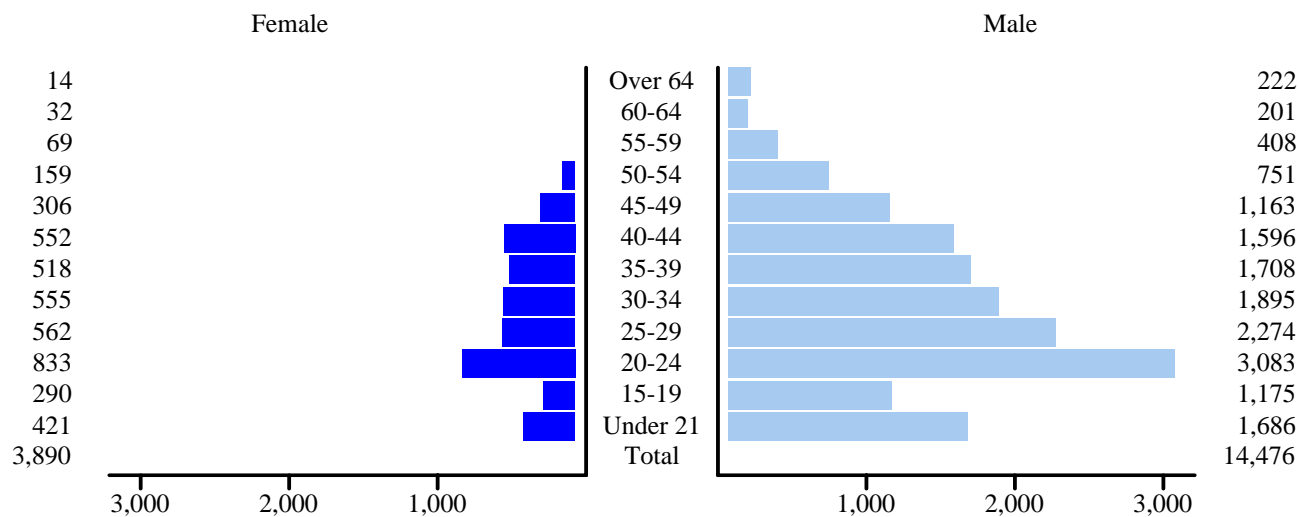
Source: DWI Citation Tracking file

Alcohol-involved Crashes by Hour and Severity, 2003



Source: Crash files

New Mexico DWI Arrests by Age and Sex, 2003



Source: DWI Citation Tracking file

Alcohol-involved Crashes and DWI Convictions by Driver Age and Sex, 2003

Age	Severe Crash Drivers ¹				DWI Conv.	Rates ²		Licensed Drivers
	Fatal Male	Fatal Female	Injury Male	Injury Female		Severe Alcohol Crashes	DWI Conv.	
Under 15	0	0	1	5	0	*	*	35
15-19	17	4	153	50	738	3.32	10.92	67,554
20-24	32	3	307	79	2,716	3.81	24.57	110,548
25-29	18	7	184	36	2,033	2.32	19.24	105,650
30-34	16	7	137	39	1,763	1.79	15.85	111,234
35-39	15	4	125	41	1,581	1.62	13.81	114,506
40-44	27	4	102	47	1,525	1.34	11.37	134,109
45-49	13	2	96	36	1,032	1.11	7.79	132,464
50-54	14	3	72	20	573	0.89	4.68	122,346
55-59	3	1	38	14	324	0.55	3.18	101,927
60-64	0	0	24	3	163	0.35	2.11	77,397
Over 64	0	2	33	6	165	0.23	0.94	176,135
Total	155	37	1,272	376	12,613	1.47	10.06	1,253,905
Under 21	24	5	218	70	1,178	3.54	13.15	89,577

Sources: Crash files and Driver History file

1 Severe crashes are those resulting in death or injury.

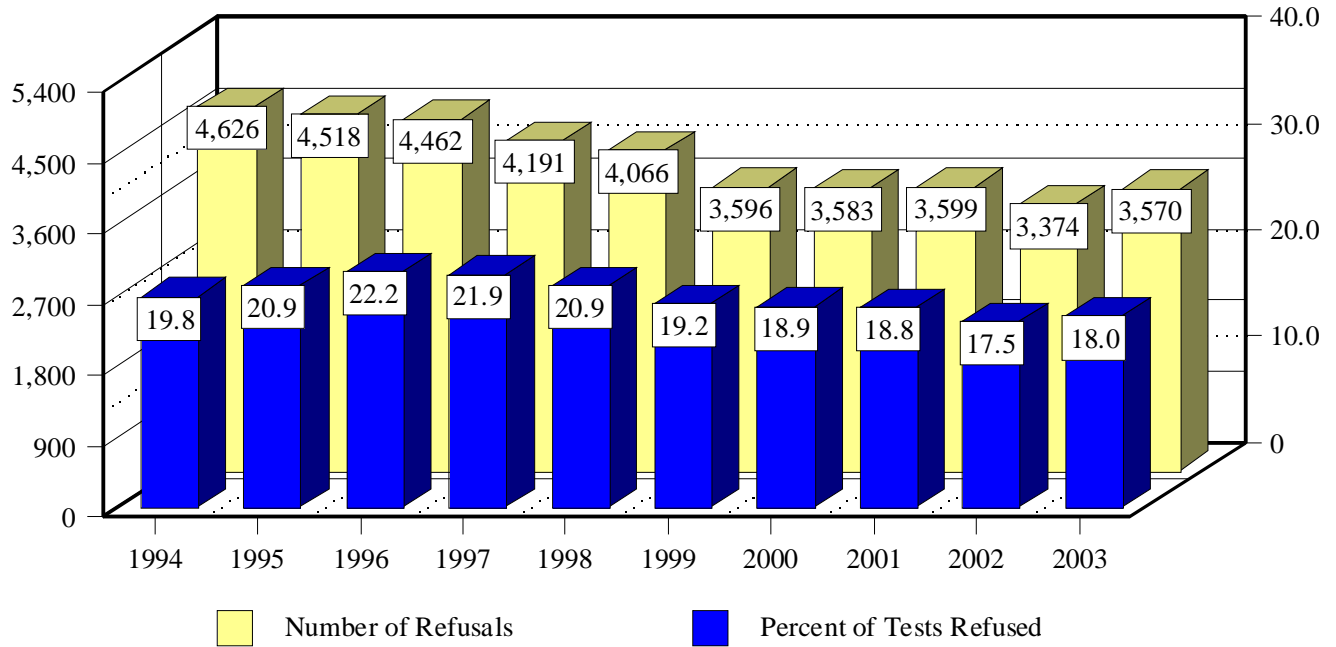
2 Rates are per 1,000 licensed drivers.

* Due to the low number of licensed drivers under 15 years old the rates for this age group are not informative.

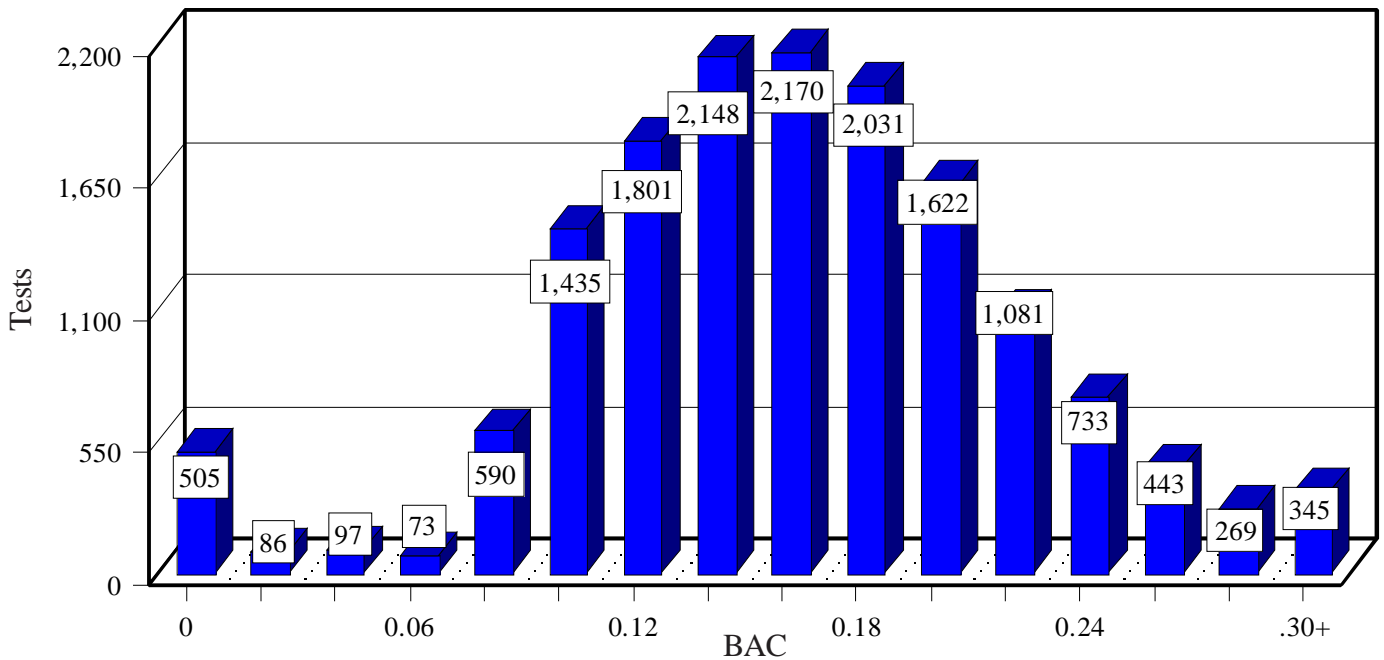
- ◆ These are drivers or pedestrians in crashes who reportedly had been drinking.
- ◆ People under the legal drinking age of 21 accounted for 9.3 percent of the DWI convictions in 2003.
- ◆ See explanation of conviction counts on page 15.

BAC TESTS

BAC Test Refusals, 1994-2003



BAC Test Results, 2003



Source: DWI Citation Tracking file

- ◆ The mean BAC (Blood Alcohol Concentration) result was 0.16, double the legal limit for drivers over 21. This average excludes tests with a result of 0.0.

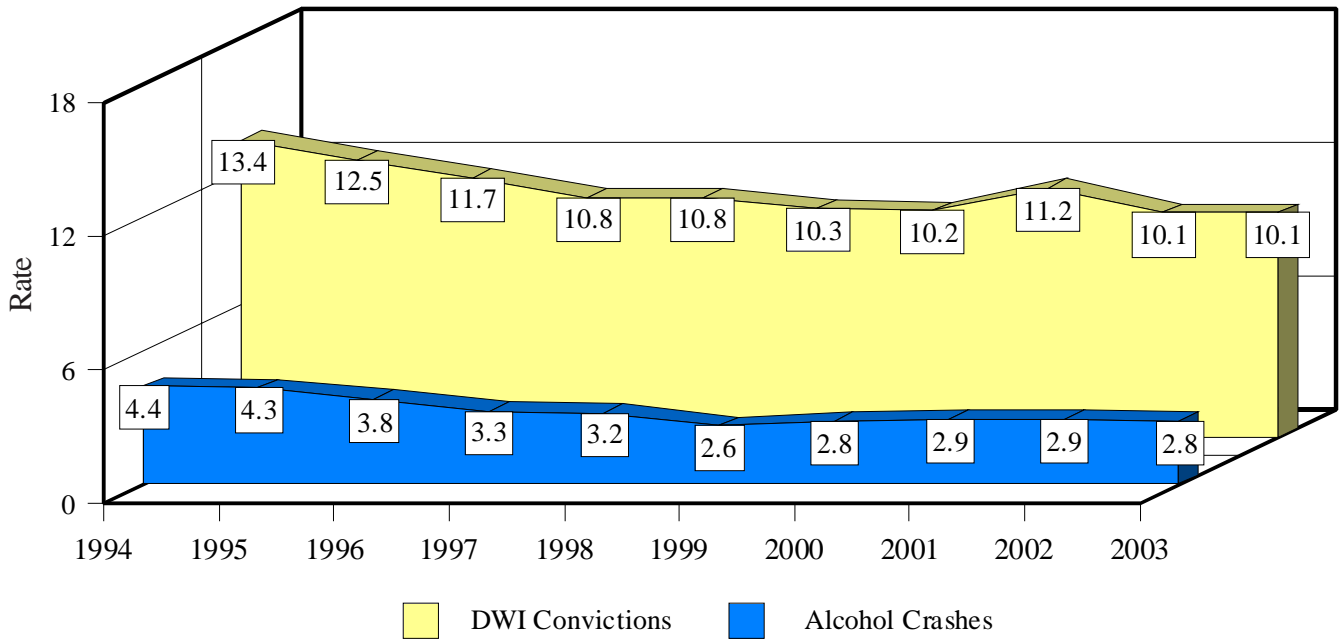
Mean Number of Days to Court Disposition by County, 2003

County	Total Arrests	Percent Crash Involved ¹	Mean BAC ²	Citations Resolved ³		Mean Days ⁴	
				DWI Conviction	Dismissal	DWI Conviction	Dismissal
Bernalillo	7,140	13	0.15	2,517	1,465	121	157
Catron	24	8	0.14	23	1	53	218
Chaves	215	25	0.16	154	18	58	110
Cibola	558	9	0.16	367	96	110	108
Colfax	152	15	0.17	88	23	69	124
Curry	422	13	0.15	247	46	89	120
De Baca	12	8	0.12	10	1	138	164
Doña Ana	1,701	13	0.16	879	150	139	136
Eddy	363	19	0.16	289	25	67	62
Grant	259	17	0.17	164	62	65	89
Guadalupe	77	15	0.16	60	10	68	108
Harding	6	33	0.12	3	2	71	73
Hidalgo	82	3	0.15	62	12	61	163
Lea	469	11	0.14	347	53	54	119
Lincoln	298	16	0.16	200	35	55	147
Los Alamos	36	27	0.18	25	6	120	33
Luna	190	11	0.16	121	22	71	99
McKinley	1,216	15	0.18	641	274	92	127
Mora	40	30	0.18	28	3	104	94
Otero	571	12	0.15	327	63	63	107
Quay	100	8	0.16	85	2	40	39
Rio Arriba	360	29	0.17	221	68	71	113
Roosevelt	167	15	0.15	108	11	58	89
Sandoval	565	20	0.17	289	106	114	149
San Juan	1,999	10	0.16	1,416	202	90	138
San Miguel	379	15	0.17	235	51	110	147
Santa Fe	1,619	20	0.16	943	215	163	106
Sierra	169	7	0.17	114	16	99	138
Socorro	198	15	0.17	87	20	111	172
Taos	243	32	0.18	116	46	84	115
Torrance	155	11	0.17	105	24	83	123
Union	13	23	0.14	8	5	92	153
Valencia	515	25	0.16	268	114	94	117
Total	20,313	15	0.16	10,547	3,247	104	138

Source: DWI Citation Tracking file

- 1 This is the percentage of citations that were issued after a traffic crash brought the DWI incident to police attention.
- 2 Only citations for which a BAC was determined are included; citations for which the offender refused to submit to a BAC test are excluded.
- 3 These are citations issued in 2003 for which results were available by July 2004. The conviction counts differ from those in other tables because these are based on citations issued in 2003 as opposed to convictions handed down in 2003. The resulting convictions or dismissals could have been decided in 2004.
- 4 These are the average number of days from the date of the citation to the date of any court disposition as of July 2004. For example, the 2,517 convictions in Bernalillo County were decided on average within 121 days after the citation.

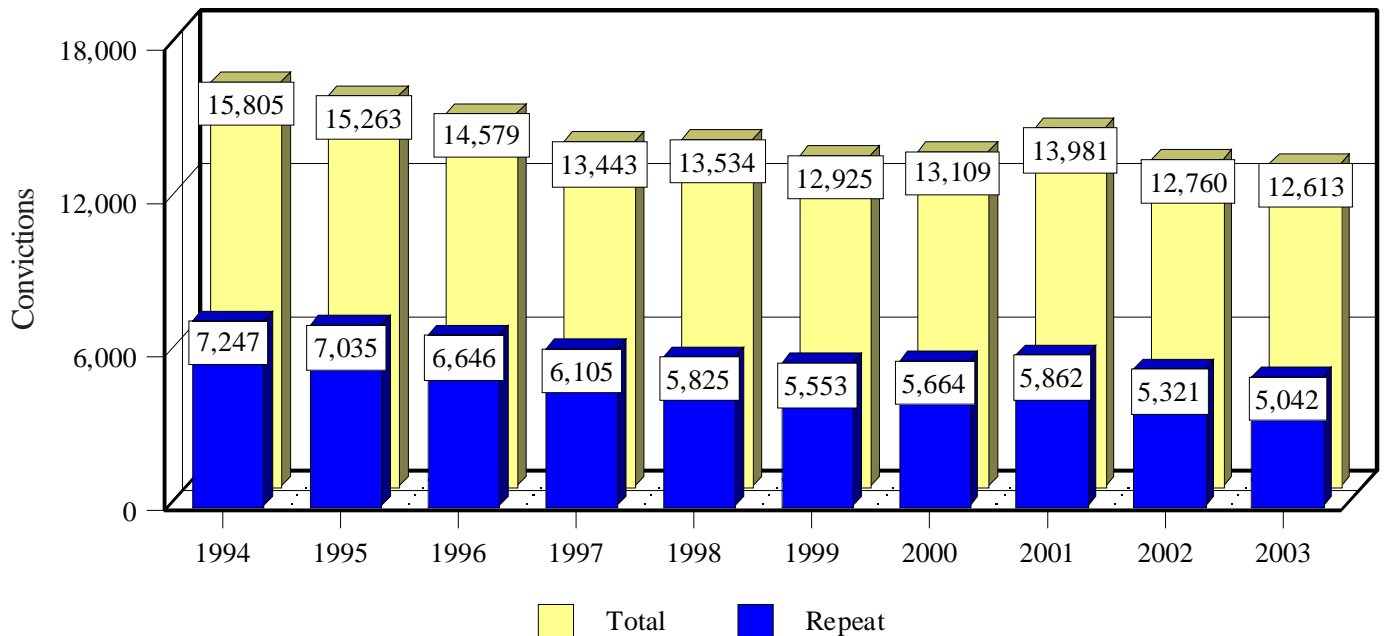
DWI Conviction Rates and Alcohol-involved Crash Rates, 1994-2003



Sources: Driver History file and Crash files

- ◆ The rates are incidents (convictions or crashes) per 1,000 licensed drivers. See page 15 for a note about convictions. The rate of alcohol-involved crashes has decreased 36% from 1994 to 2003.

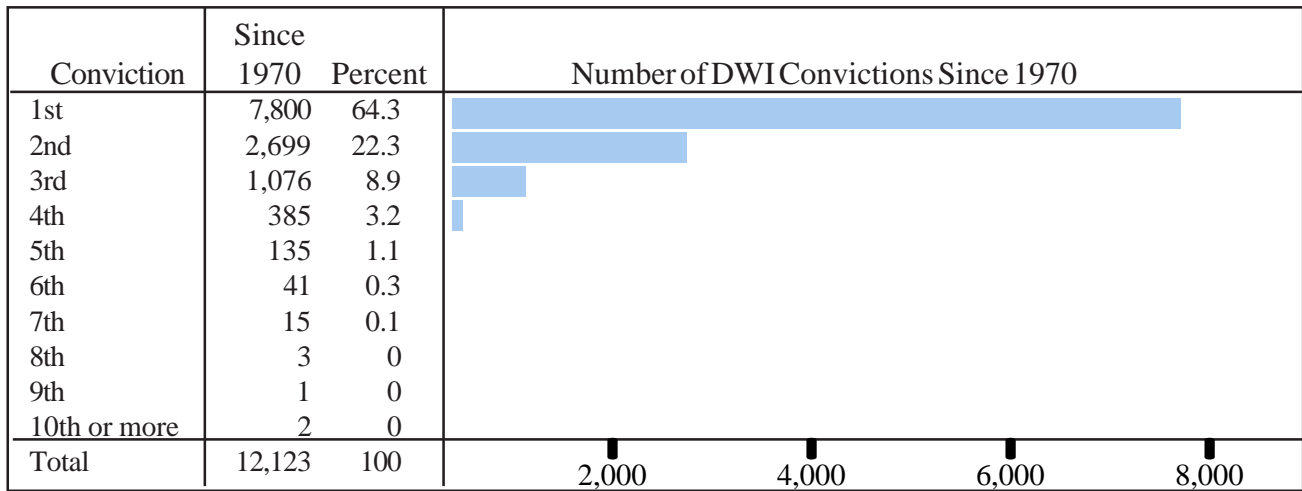
Repeat and Total DWI Convictions, 1994-2003



Source: Driver History file

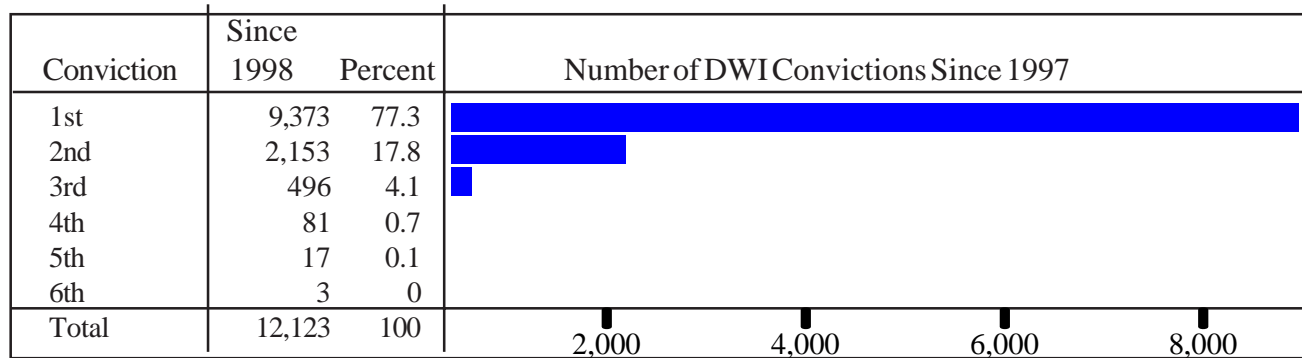
REPEAT OFFENDERS

Lifetime DWI Convictions for Drivers Convicted of DWI in 2003



Source: Driver History file

DWI Convictions in the Last Five Years for Drivers Convicted of DWI in 2003



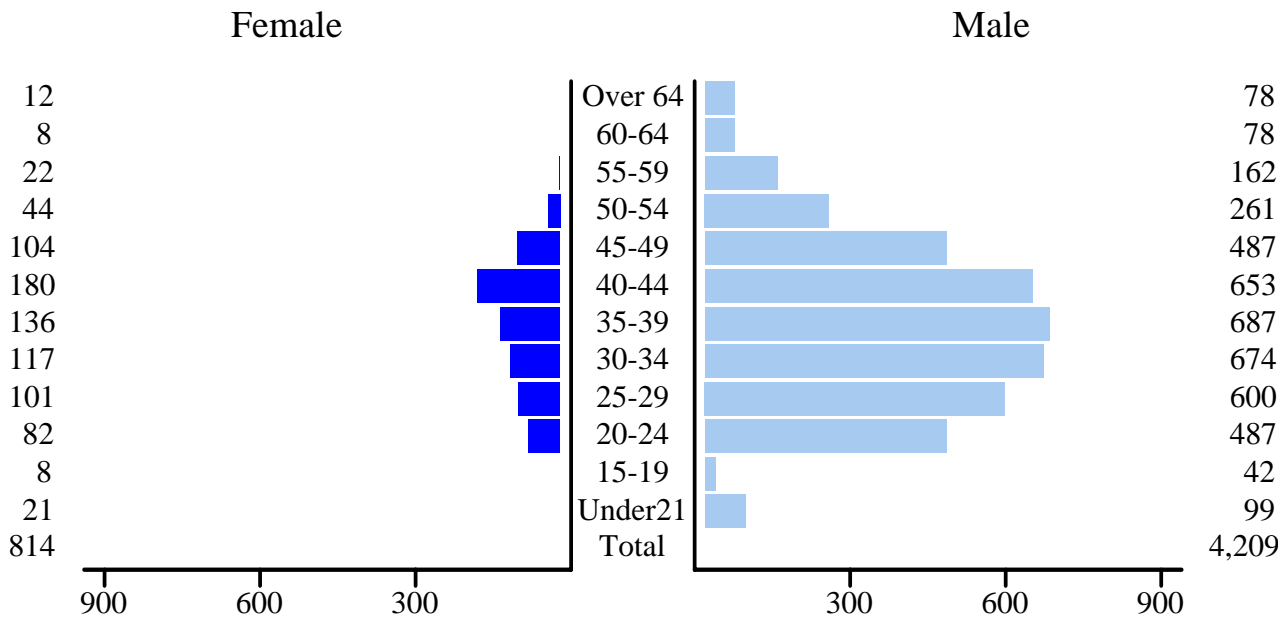
Source: Driver History file

- ◆ There were 12,123 people convicted of DWI in 2003. Of those, 9,373 had not been convicted since 1998, and 7,800 had not been convicted since 1970 (1,573 had been convicted at least once between 1970 and 1998). The number of repeat convictions (5,042, see chart on page 13) is *not* equal to the total minus the number of first convictions, because some people were convicted more than once in 2003. Only their last conviction is included in the table above, while all repeat convictions are included in the chart on the next page.

Conviction note: Unless otherwise noted, conviction counts in this report are based on convictions handed down in 2003, and are only comparable to counts since the 1994 edition of this report. The citations which resulted in these convictions could have been issued before 2003. Due to the sometimes lengthy period between citation and conviction (see table on page 12), counting convictions resulting from citations issued during a particular year (e.g., 2003) would result in convictions after the publication of this report never being counted. By counting convictions regardless of citation date, all convictions are included.

REPEAT OFFENDERS

DWI Repeat Convictions by Age and Sex, 2003



♦ See page 15 for a note about convictions.

Repeat DWI Convictions by NMDOT Districts*, 1994 - 2003

Year	District 1	District 2	District 3	District 4	District 5	District 6	State
1994	879	1,185	1,919	394	1,606	1,202	7,247
1995	808	1,168	1,767	383	1,693	1,169	7,035
1996	828	1,062	1,741	382	1,595	1,005	6,646
1997	733	1,019	1,445	371	1,534	970	6,105
1998	634	935	1,628	330	1,368	911	5,825
1999	592	937	1,563	324	1,290	822	5,553
2000	660	909	1,445	310	1,533	781	5,664
2001	740	829	1,827	292	1,488	676	5,862
2002	670	655	1,632	306	1,456	584	5,321
2003	689	659	1,441	262	1,343	641	5,042

* These Districts are based on counties, with the following definition: **District 1:** Doña Ana, Grant, Hidalgo, Luna, Sierra and Socorro; **District 2:** Chavez, Curry, De Baca, Eddy, Lea, Lincoln, Otero and Roosevelt; **District 3:** Bernalillo and Valencia; **District 4:** Colfax, Guadalupe, Harding, Mora, Quay, San Miguel and Union; **District 5:** Los Alamos, Rio Arriba, San Juan, Santa Fe, Taos and Tarrant; **District 6:** Catron, Cibola, McKinley and Sandoval.

INDEX & SOURCES

cover

Age	3, 10, 15		
Agency	8		
Arrests	8, 9, 10		
BAC tests	11		
BAC test refusal	11		
Citations	8, 9, 10, 12		
Crash related	12		
City	7		
Contributing factors	2		
Convictions	6, 7, 10, 13		
Repeat convictions	13, 14, 15		
County	3, 6, 12		
Court	12		
Day	8		
Days to disposition	12		
District	15		
DWI crashes			
All	8, 9, 13		
Fatal or Injury	6, 7, 10, inside back		
		Economic impact	3
		Fatalities	6, 7
		Hour	9
		Laws	4, 5
		Licensed drivers	6, 7, 10
		Mean BAC	12
		Mean days	12
		Month	8
		Penalties	4, 5
		Population	2, 3
		Rates	2, 6, 7, 10, 13
		Repeat convictions	13, 14, 15
		Sex	10, 15
		Sober people	3
		Under 18	3
		Under 21	10, 15

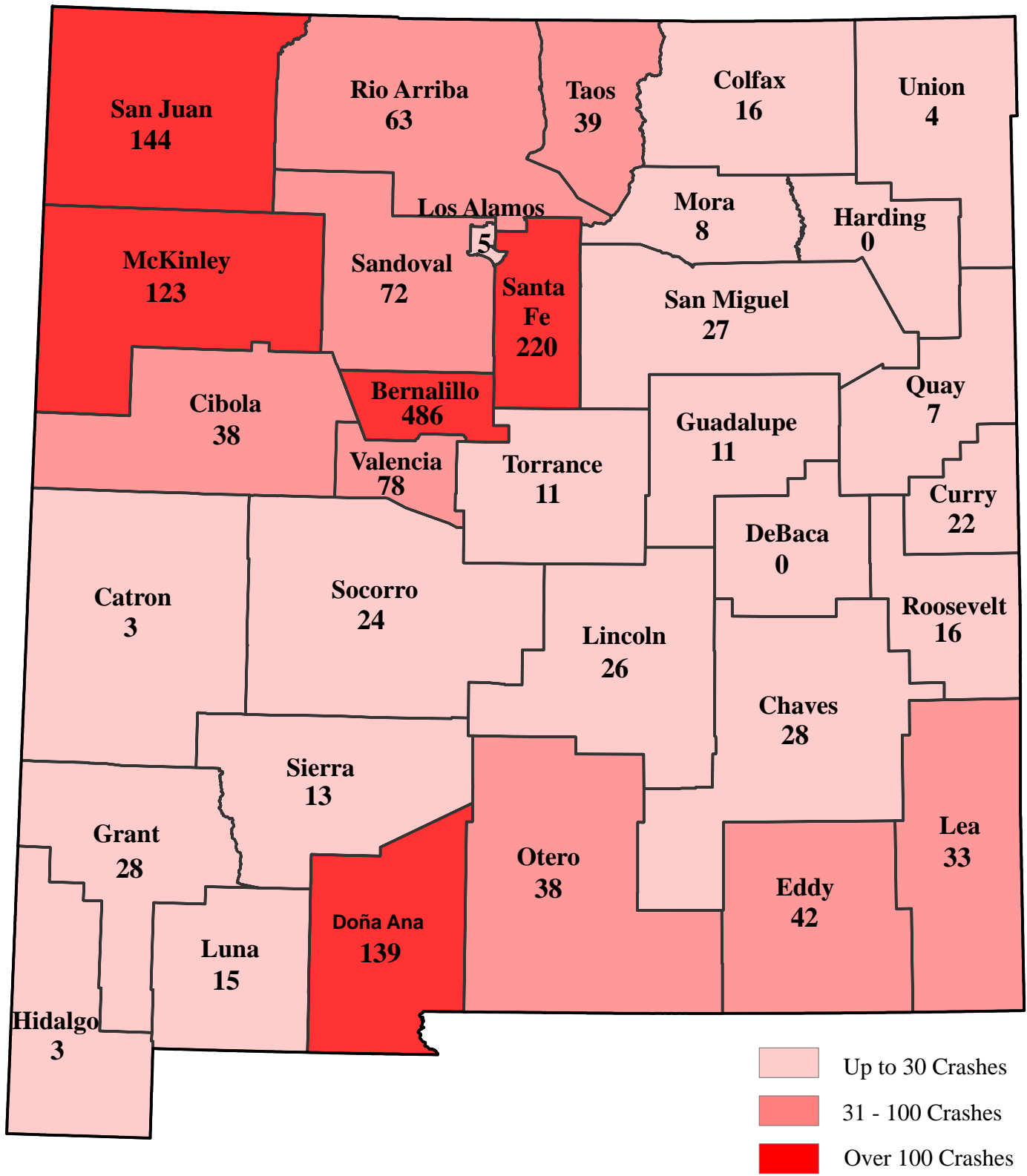
Source data are noted below each table. The data sources are:

BAC results	The Blood Alcohol Content (BAC) data for the chart on page 11 are from the Motor Vehicle Division's DWI Citation Tracking file (see below).
Crash files	Information from crash reports are submitted by the many law enforcement agencies in the state, compiled and processed by the NMDOT, Transportation Statistics Bureau and the reprocessed by the Division of Government Research, University of New Mexico.
Driver History file	Driver's license and conviction data maintained by the Motor Vehicle Division. Conviction data are current as of July 2004.
DWI Citation Tracking file	Data from all DWI citations submitted to, and maintained by, the Motor Vehicle Division. BAC test results in this file generally include only breath tests. Data are as of July 2004.
Fatality Analysis Reporting System	Database of all fatal crashes on public roads in the United States. This file is maintained by the National Highway Traffic Safety Administration
Licensed drivers	Counts are as of July 2004 from the Driver History file maintained by the Motor Vehicle Division.
Population	Estimates are from the Census Bureau.

The Division of Government Research provides a wide range of data processing and analysis services. This report presents a portion of the data available concerning DWI in the state of New Mexico. These data are processed by DGR, but owned by the NM Department of Transportation. Requests for further information should be directed to Traffic Safety Bureau at the address inside the front cover.

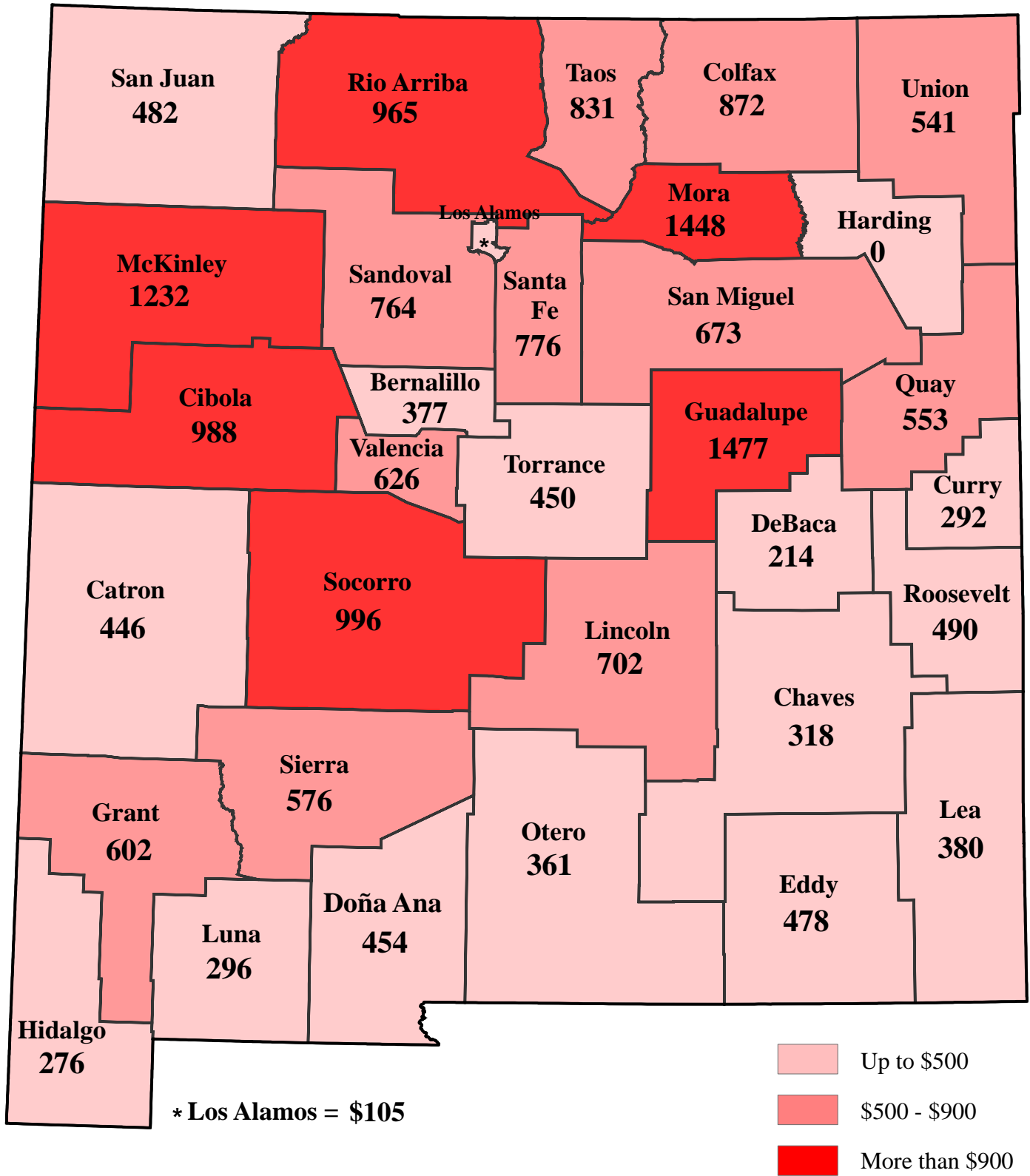
Several people at DGR are responsible for the data and analysis included in this report. James W. Davis is the Director of DGR. Bich-Hanh Nguyen is TSB project leader. This report was produced by Annaliese Mayette with assistance from Schuyler Smith and Susan W. Bucklin.

Number of Fatal or Injury 'DWI'* Crashes , 2003



* A 'DWI' Crash is a crash in which at least one driver is alcohol-involved.

Per Capita Cost Estimates of Alcohol-involved Crashes, 2003



DWICost estimates based on FHWA economic loss formulae
 Population estimates are from July 2003
 New Mexico's cost estimate is \$536 Per capita