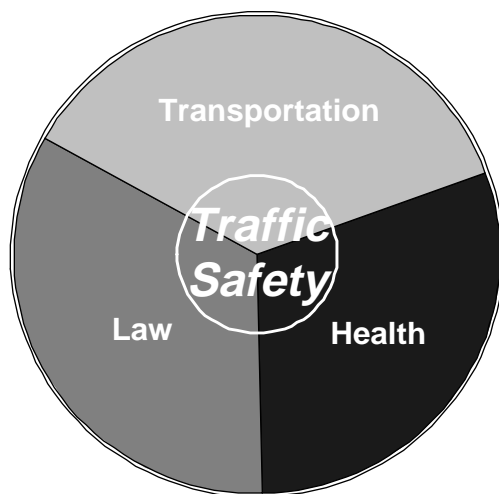


1997

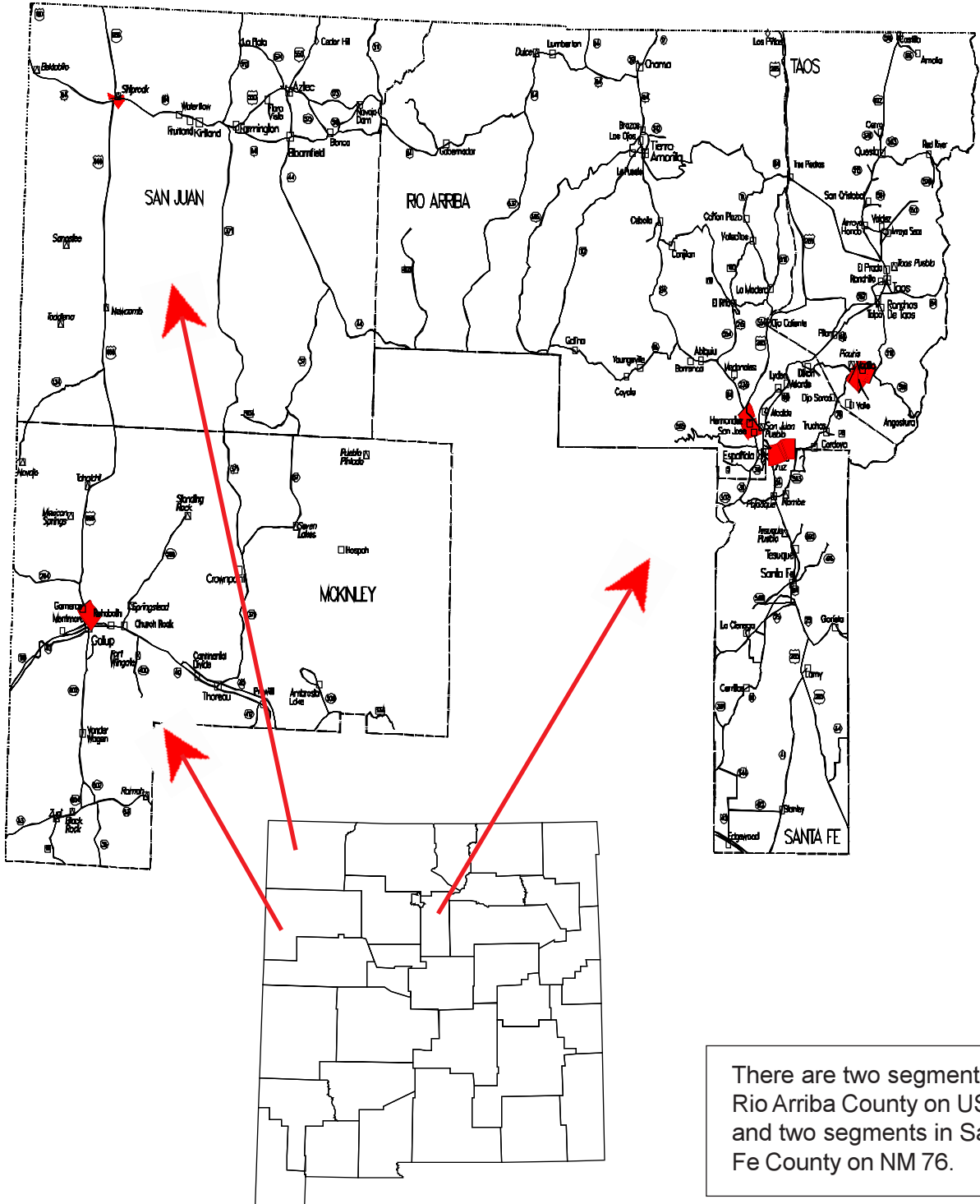
NEW MEXICO TRAFFIC CRASH INFORMATION



New Mexico State Highway and Transportation Department
Transportation Programs Division
Traffic Safety Bureau

New Mexico's Highest Crash Rate Rural Highway Segments, 1997

(See page 15)



There are two segments in Rio Arriba County on US 84, and two segments in Santa Fe County on NM 76.

New Mexico Traffic Crash Information 1997

New Mexico State Highway and Transportation Department
Transportation Programs Division
Traffic Safety Bureau

June 1998

Produced by the Division of Government Research
University of New Mexico
Under grant number 98-TR-01-01

Distributed in compliance with
New Mexico Statute 66-7-214
as a reference source regarding
New Mexico traffic crashes

I N S I D E

Definitions	1
Overview	2
When	5
Where	9
Crash Details	16
Who	19
Pedestrians	23
Teenagers	25
Young Adults	26
Senior Citizens	27
Seatbelt	28
Alcohol	29
Motorcycles	33
Trains	35
Sources	36
Index	37

INTRODUCTION

This edition of *New Mexico Traffic Crash Information* reviews traffic crash data in New Mexico from January through December, 1997. It presents crash data in the form of graphs for those who prefer an impressionistic view and tables for those who require reference information. Maps are provided where a geographic perspective is useful.

The statistics shown in this publication reflect only those crashes that occurred on public roadways and resulted in death, personal injury, or \$500 or more in property damage according to the investigating officer's judgement. No account is kept of unreported crashes or crashes that occurred on private property.

The information found in this report was drawn from the Uniform Accident reports, which are distinct from those required by New Mexico's Financial Responsibility Act: statutes 66-5-201 to 66-5-239. These reports are compiled and processed by the Transportation Statistics Bureau of the New Mexico State Highway and Transportation Department, and analyzed under contract by the Division of Government Research for statistical analysis and report generation. **Since the data are occasionally incomplete or imprecise, discrepancies may be found in a few tables, or in comparison to other data sources.** Estimated and revised figures are indicated where applicable. The tables and graphs which appeared in editions of this report prior to 1993 **only** showed counts of occupants that were involved in fatal or injury crashes. Since 1993, these same tables and graphs display counts of **all** occupants involved in crashes (i.e., this now includes occupants involved in property-damage-only crashes).

A great debt is owed to those hundreds of police officers across the state who made this report possible.

Requests for further information or additional copies of this report should be addressed to:

Traffic Safety Bureau
Transportation Programs Division
State Highway and Transportation Department
State of New Mexico
P.O. Box 1149
Santa Fe, New Mexico 87504-1149
(505) 827-0427
web site: <http://www.unm.edu/~dgrint/tsb.html>

The following is a list of terms and associated definitions which appear throughout this report.

Alcohol-involved - a crash in which the Uniform Accident report indicated that 1) a DWI citation was issued, 2) alcohol was a contributing factor to the crash, or 3) a driver or pedestrian involved in the crash had been drinking.

Crash Rate - crashes per 100 Million Vehicle Miles unless otherwise specified.

Death Rate - traffic fatalities per 100 Million Vehicle Miles unless otherwise specified.

Drivers - drivers do not include pedalcyclists or pedestrians.

Fatal Crash - a crash in which at least one individual was killed.

Fatalities - see killed.

Injured - the number of people injured in a crash, as opposed to the number of crashes in which people were injured. Counts include people injured but not killed in fatal crashes.

Injury Crash - a crash in which at least one individual was injured. Fatal crashes are not included in this category.

Killed - the number of people killed in a crash, as opposed to the number of crashes in which people were killed. The term fatalities is synonymous with killed.

Local Resident - a person whose residence was within 25 miles of the crash site.

Minor Injuries - a possible non-visible injury, or an injury of unknown severity.

Property Damage Only (Property Damage) - designates a crash that did not involve injuries or fatalities.

Rural - an area with a population of 2,500 or less.

Serious Injuries - 1) an incapacitating injury, 2) a visible but not incapacitating injury.

Traffic Crash - an incident on a public roadway involving one or more motor vehicles that resulted in death, personal injury, or at least \$500 in property damage.

Urban - a town or a city with a population of 2,500 or more.

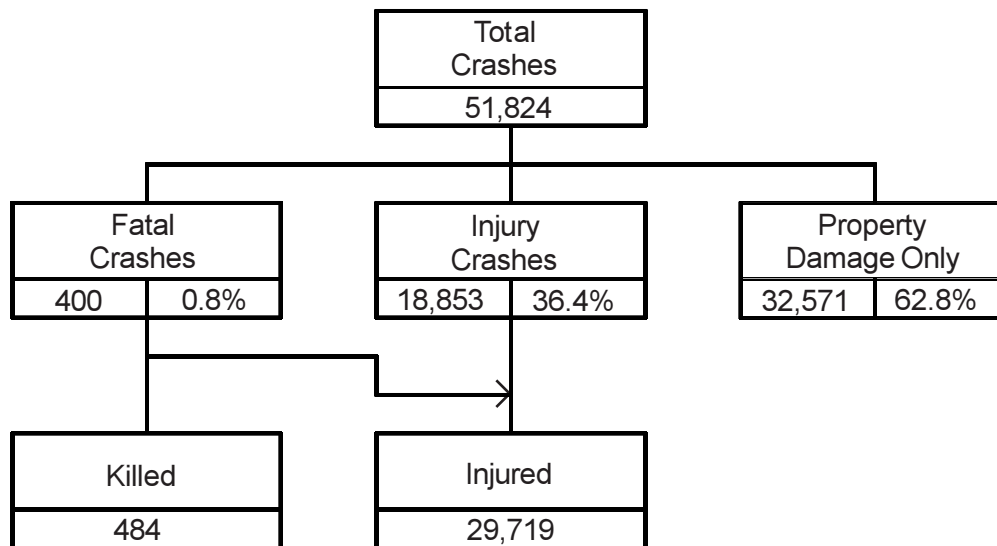
Vehicle Miles - the number of miles traveled annually by motor vehicles. MVM and 100 MVM stand for million and one hundred million vehicle miles, respectively.

OVERVIEW

In 1997 ...

- An individual died in a crash every 18 hours.
- A person was injured in a crash every 18 minutes.
- A traffic crash occurred every 10 minutes.

Crashes in New Mexico by Severity, 1997



New Mexico Roadway Statistics, 1988 - 1997

Calendar Year	New Mexico					Death Rates ¹	
	Motor Vehicle Registrations	MVM ² Traveled	Population	Traffic Fatalities	Traffic Injuries	New Mexico	United States ³
1997	1,570,192	24,991	1,729,751	484	29,719	28.0	15.6
1996	1,550,514	23,253	1,711,256	481	31,352	28.1	15.7
1995	1,513,487	22,817	1,686,288	485	30,996	28.8	16.3
1994	1,484,239	22,201	1,655,927	447	29,910	27.0	15.6
1993	1,450,982	20,791	1,616,737	431	28,032	26.7	15.5
1992	1,376,571	20,070	1,581,873	460	27,195	29.1	15.4
1991	1,280,948	19,017	1,547,684	469	25,019	30.3	16.5
1990	1,377,968	18,478	1,519,984	499	24,904	32.8	17.9
1989	1,336,880	17,586	1,503,901	538	24,960	35.8	18.4
1988	1,277,110	16,620	1,490,337	487	26,369	32.7	19.2

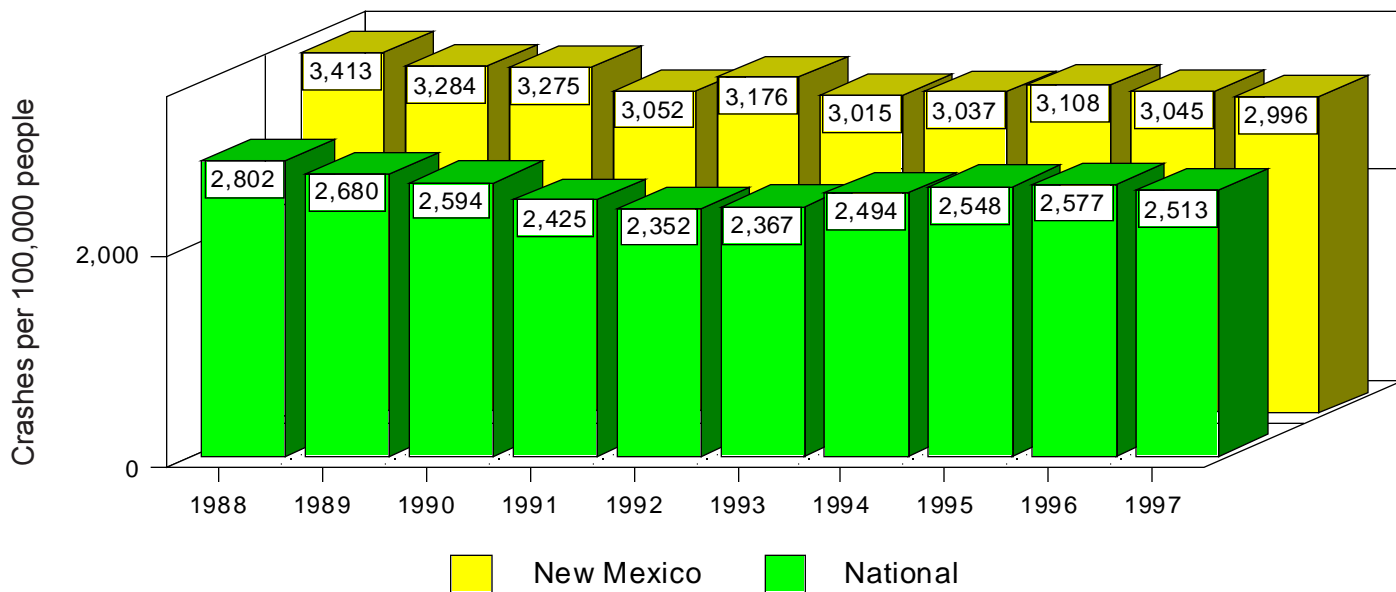
¹ Rates are per 100,000 population.

^{2,3} Definition: see page 36.

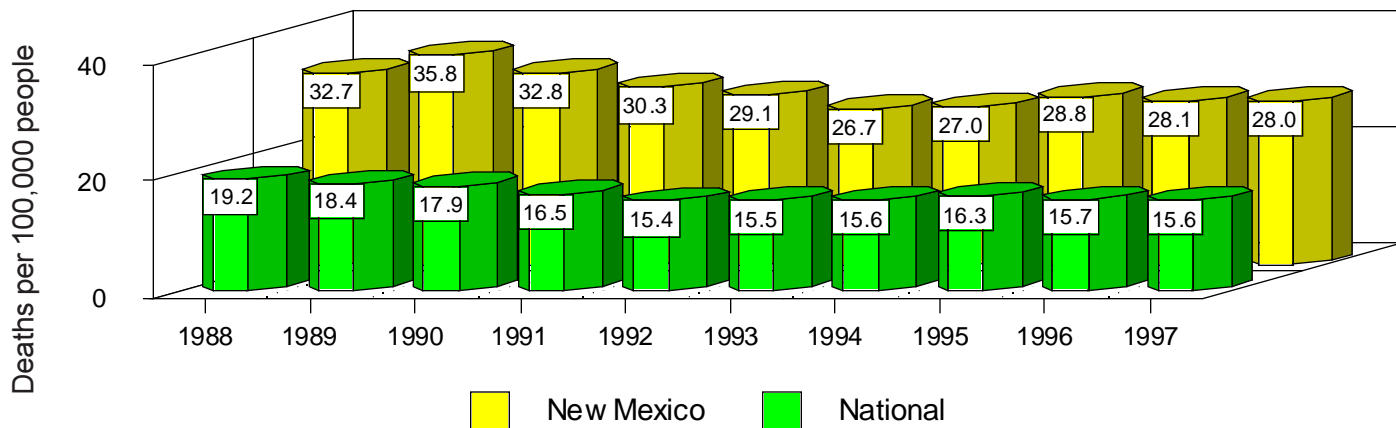
In New Mexico ...

- Overall, the New Mexico crash death rate decreased by 14 percent from 1988 to 1997.

New Mexico and National Crash Rates, 1988 - 1997



New Mexico and National Crash Death Rates, 1988 - 1997

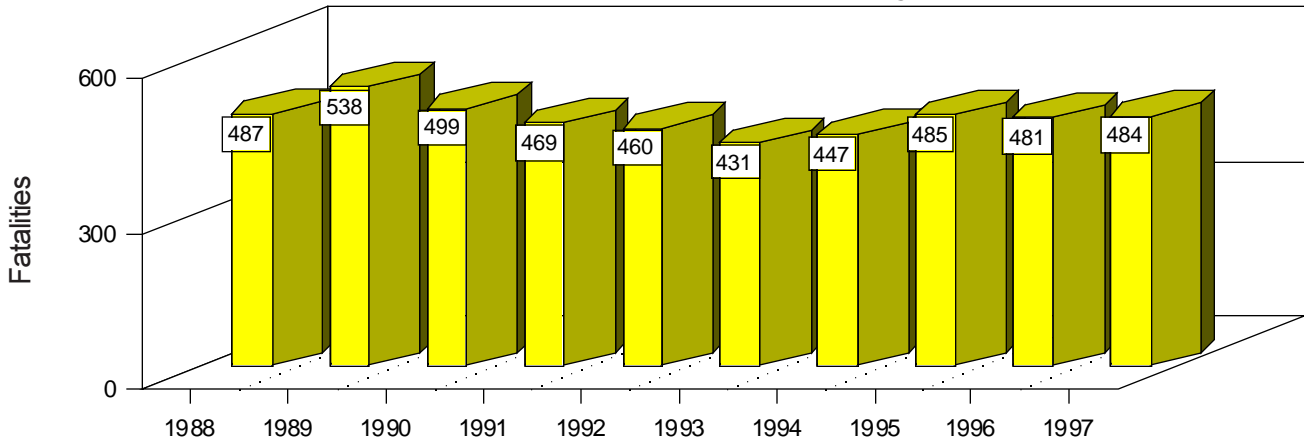


OVERVIEW

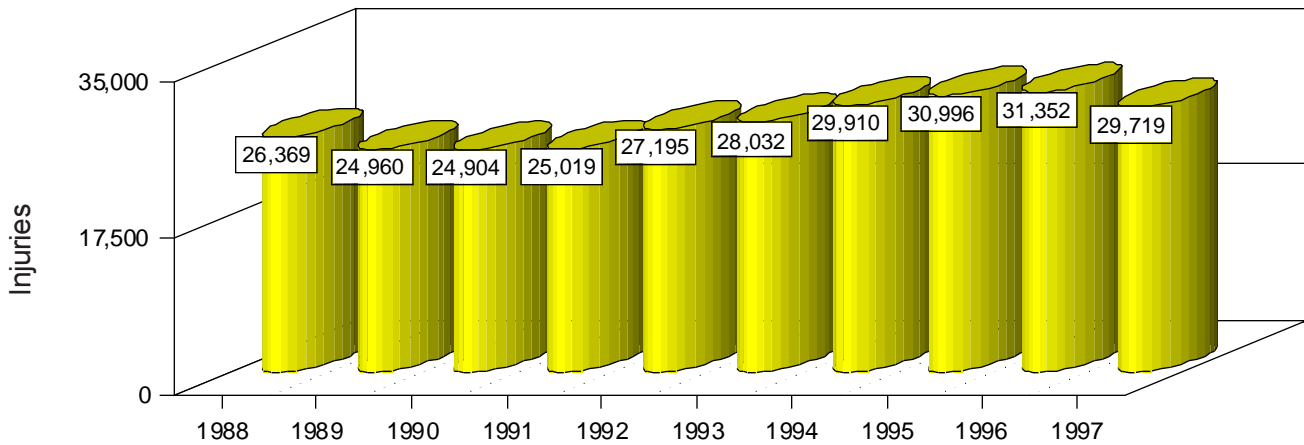
In 1997 compared to 1996, there were ...

- 1,633 (5.2 percent) fewer injuries in crashes.
(This is the first decrease since 1990.)
- 342 (0.7 percent) fewer traffic crashes.

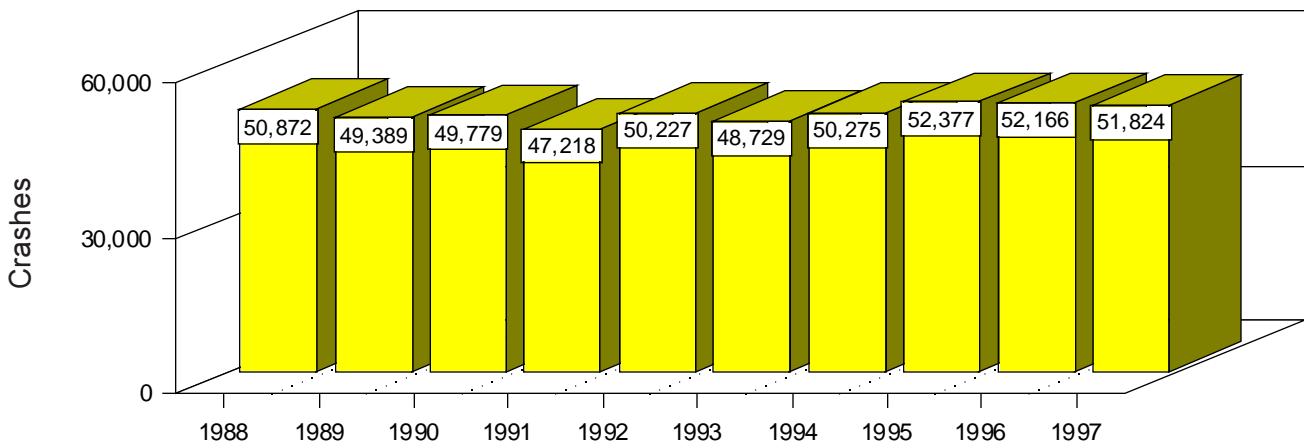
Crash Fatalities in New Mexico by Year, 1988 - 1997



Crash-related Injuries in New Mexico by Year, 1988 - 1997



Crashes in New Mexico by Year, 1988 - 1997



In 1997, there were on average ...

- 10 (35 percent) more fatal crashes per month during May through October than the rest of the year.
- 27 (58 percent) more fatal crashes on Friday, Saturday, and Sunday than other days of the week.

Crashes in New Mexico by Month, 1997

Month	Total	Percent	Total	Fatal	Percent	Fatal
January	4,956	9.6		26	6.5	
February	3,773	7.3		32	8.0	
March	3,952	7.6		30	7.5	
April	4,197	8.1		23	5.8	
May	4,397	8.5		38	9.5	
June	4,170	8.0		38	9.5	
July	4,345	8.4		36	9.0	
August	4,382	8.5		42	10.5	
September	4,186	8.1		35	8.8	
October	4,551	8.8		40	10.0	
November	4,267	8.2		28	7.0	
December	4,648	9.0		32	8.0	
Total	51,824	100.0	2,500 5,000	400	100.0	20 40

In 1997 ...

- 46 percent of all fatal crashes occurred during the weekend.

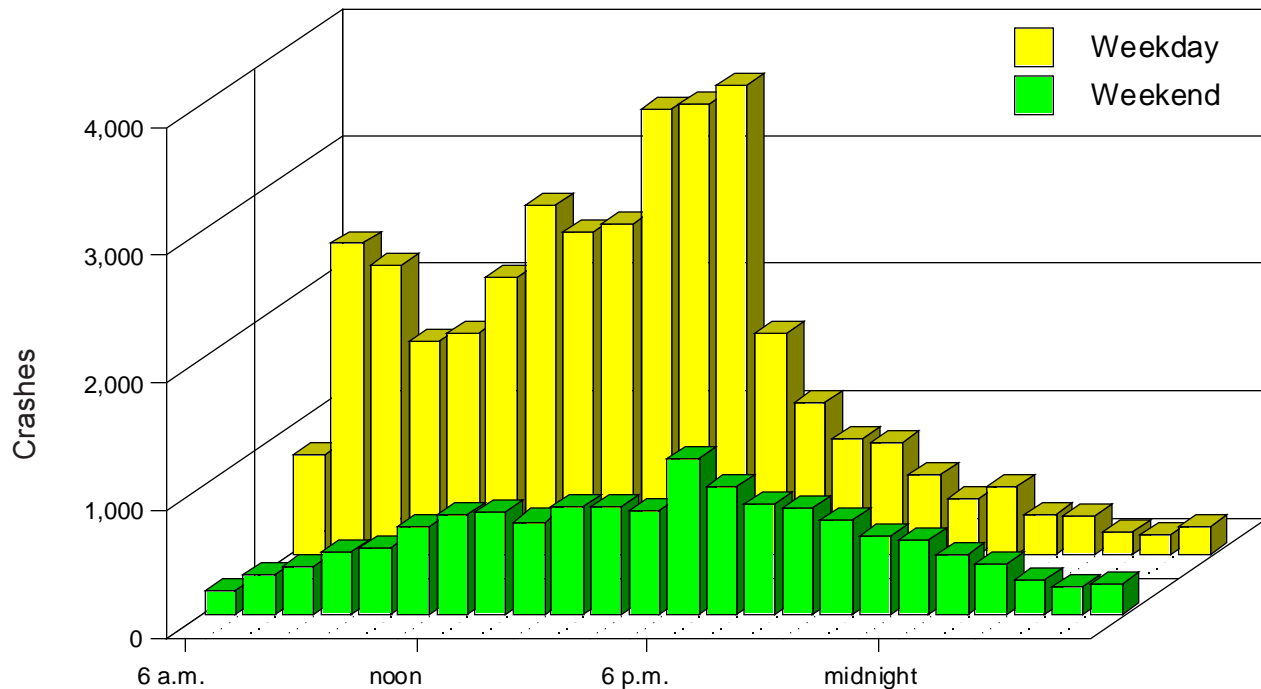
Crashes in New Mexico by Day of the Week, 1997

Day	Total	Percent	Total	Fatal	Percent	Fatal
Sunday	4,791	9.3		64	16.0	
Monday	7,477	14.5		49	12.3	
Tuesday	7,495	14.5		45	11.3	
Wednesday	7,740	15.0		41	10.3	
Thursday	7,763	15.0		48	12.0	
Friday	9,532	18.4		76	19.0	
Saturday	6,876	13.3		77	19.3	
Total	51,674	100.0	4,500 9,000	400	100.0	40 80

• For this table, each day was considered to run from 6:00 a.m. to 5:59 a.m. the following morning.

WHEN

Crashes in New Mexico by Hour of the Day, 1997



- The weekend is defined as beginning on Friday evening at 6:00 p.m. and ending on Monday morning at 5:59 a.m. For perspective, the weekend has 60 hours total, while the weekday period consists of 108 hours.

Friday between 3 p.m. and 6 p.m. was the least safe time to drive in urban areas.

The Seven Least Safe Hours of the Week in New Mexico, 1997

Urban			
Day	Hour ¹	Crashes	% of Total
Friday	3 p.m.	775	1.9
Friday	4 p.m.	737	1.8
Friday	5 p.m.	655	1.6
Monday	5 p.m.	649	1.6
Wednesday	4 p.m.	614	1.5
Tuesday	5 p.m.	613	1.5
Thursday	5 p.m.	610	1.5

Rural			
Day	Hour ¹	Crashes	% of Total
Tuesday	7 a.m.	132	1.1
Monday	5 p.m.	129	1.1
Saturday	7 p.m.	127	1.1
Friday	3 p.m.	126	1.1
Monday	4 p.m.	122	1.0
Friday	4 p.m.	121	1.0
Wednesday	5 p.m.	120	1.0

¹ An hour begins at :00 and ends at :59; 4 p.m. represents 4:00-4:59.

Crashes in New Mexico During Holiday Periods, 1994 - 1997

Holiday	Total Hours	Beginning (6 p.m.)	Ending (midnight)	Crashes			People	
				Total	Fatal	Injury	Killed	Injured
Easter								
1997	54	3/28	3/30	241	4	84	4	148
1996	54	4/05	4/07	229	3	85	3	133
1995	54	4/14	4/16	214	2	76	2	126
1994	54	4/01	4/03	277	7	104	8	178
Memorial Day								
1997	78	5/23	5/26	357	3	124	5	199
1996	78	5/24	5/27	345	8	139	8	252
1995	78	5/26	5/29	419	4	174	4	288
1994	78	5/27	5/30	379	2	151	2	257
Fourth of July								
1997	78	7/03	7/06	434	6	177	8	326
1996	30	7/03	7/04	156	1	62	1	117
1995	30	7/03	7/04	146	0	72	0	107
1994	78	7/01	7/04	405	5	174	6	296
Labor Day								
1997	78	8/29	9/01	361	9	147	11	243
1996	78	8/30	9/02	409	7	156	8	265
1995	78	9/01	9/04	395	9	174	9	312
1994	78	9/02	9/05	420	1	186	1	324
Thanksgiving								
1997	102	11/26	11/30	408	5	160	5	292
1996	102	11/27	12/01	675	5	224	6	371
1995	102	11/22	11/26	421	7	152	8	273
1994	102	11/23	11/27	444	7	161	7	275
Christmas								
1997	30	12/24	12/25	152	0	50	0	70
1996	30	12/24	12/25	92	0	39	0	75
1995	78	12/22	12/25	316	2	116	2	205
1994	54	12/23	12/25	331	4	126	4	216
New Year's								
1997-1998*	30	12/31	1/01/98	89	2	28	3	49
1996-1997	30	12/31	1/01/97	144	3	55	3	81
1995-1996	78	12/29	1/01/96	461	7	165	11	253
1994-1995	78	12/30	1/02/95	371	5	130	7	230

* 1997-1998 New Year's Data are preliminary as of 5/98

New Mexico Fatalities by Day and Alcohol Involvement, 1997

WHEN

Traffic Safety Bureau

January

Sun	Mon	Tue	Wed	Thu	Fri	Sat
			1	2	3	4
5	6	7	8	9	10	11
12	13	14	15	16	17	18
19	20	21	22	23	24	25
26	27	28	29	30	31	

February

Sun	Mon	Tue	Wed	Thu	Fri	Sat
						1
2	3	4	5	6	7	8
9	10	11	12	13	14	15
16	17	18	19	20	21	22
23	24	25	26	27	28	

March

Sun	Mon	Tue	Wed	Thu	Fri	Sat
						1
2	3	4	5	6	7	8
9	10	11	12	13	14	15
16	17	18	19	20	21	22
23	24	25	26	27	28	29
30	31					

April

Sun	Mon	Tue	Wed	Thu	Fri	Sat
		1	2	3	4	5
6	7	8	9	10	11	12
13	14	15	16	17	18	19
20	21	22	23	24	25	26
27	28	29	30			

May

Sun	Mon	Tue	Wed	Thu	Fri	Sat
				1	2	3
4	5	6	7	8	9	10
11	12	13	14	15	16	17
18	19	20	21	22	23	24
25	26	27	28	29	30	31

June

Sun	Mon	Tue	Wed	Thu	Fri	Sat
1	2	3	4	5	6	7
8	9	10	11	12	13	14
15	16	17	18	19	20	21
22	23	24	25	26	27	28
29	30					

- 8 -

July

Sun	Mon	Tue	Wed	Thu	Fri	Sat
		1	2	3	4	5
6	7	8	9	10	11	12
13	14	15	16	17	18	19
20	21	22	23	24	25	26
27	28	29	30	31		

August

Sun	Mon	Tue	Wed	Thu	Fri	Sat
					1	2
3	4	5	6	7	8	9
10	11	12	13	14	15	16
17	18	19	20	21	22	23
24	25	26	27	28	29	30
31						

September

Sun	Mon	Tue	Wed	Thu	Fri	Sat
	1	2	3	4	5	6
7	8	9	10	11	12	13
14	15	16	17	18	19	20
21	22	23	24	25	26	27
28	29	30				

October

Sun	Mon	Tue	Wed	Thu	Fri	Sat
			1	2	3	4
5	6	7	8	9	10	11
12	13	14	15	16	17	18
19	20	21	22	23	24	25
26	27	28	29	30	31	

November

Sun	Mon	Tue	Wed	Thu	Fri	Sat
						1
2	3	4	5	6	7	8
9	10	11	12	13	14	15
16	17	18	19	20	21	22
23	24	25	26	27	28	29
30						

December

Sun	Mon	Tue	Wed	Thu	Fri	Sat
	1	2	3	4	5	6
7	8	9	10	11	12	13
14	15	16	17	18	19	20
21	22	23	24	25	26	27
28	29	30	31			

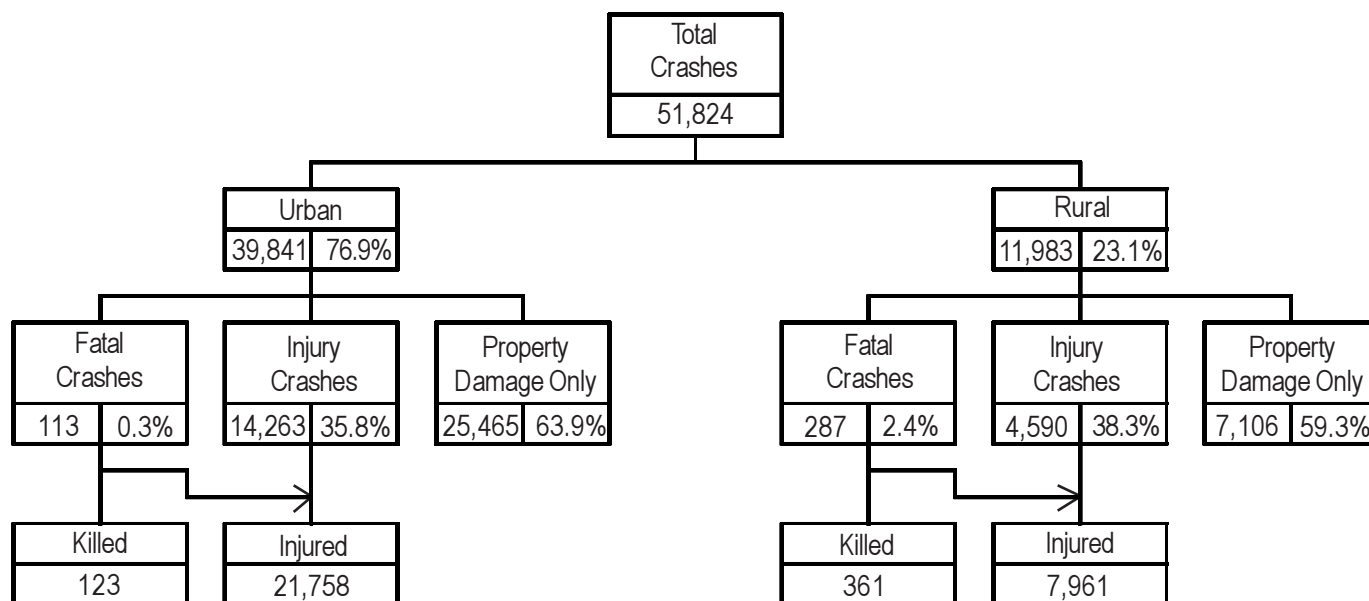
• Alcohol-involved Fatality

■ Non Alcohol-involved Fatality

• Unlike other graphs and tables in this section, crashes that occur between midnight and 5:59 am are not shifted to the previous day.

DGR, UNM

Crashes in New Mexico by Road System, 1997



Crashes on New Mexico Pueblos and Reservations, 1997

Pueblo or Reservation	Crashes				People	
	Total	Fatal	Injury	Property Damage	Killed	Injured
Acoma	61	1	23	37	2	37
Alamo Navajo	13	0	6	7	0	12
Cañoncito Navajo	3	0	1	2	0	2
Cochiti	13	0	8	5	0	10
Isleta	142	4	59	79	8	89
Jemez	21	1	9	11	1	22
Jicarilla Apache	89	0	21	68	0	30
Laguna	119	8	43	68	10	86
Mescalero Apache	99	3	33	63	3	52
Nambe	3	0	2	1	0	3
Navajo	372	18	160	194	24	323
Picuris	22	0	14	8	0	17
Pojoaque	98	3	43	52	4	80
Ramah Navajo	14	0	5	9	0	8
Sandia	77	4	33	40	5	49
San Felipe	87	4	39	44	4	70
San Ildefonso	15	1	5	9	1	10
San Juan	55	5	22	28	5	49
Santa Ana	41	0	21	20	0	32
Santa Clara	19	0	8	11	0	8
Santo Domingo	67	1	27	39	1	47
Taos Pueblo	2	0	1	1	0	3
Tesuque	28	0	20	8	0	34
Zia	13	1	3	9	2	10
Zuni	88	1	25	62	1	37

New Mexico Crashes by County, 1997

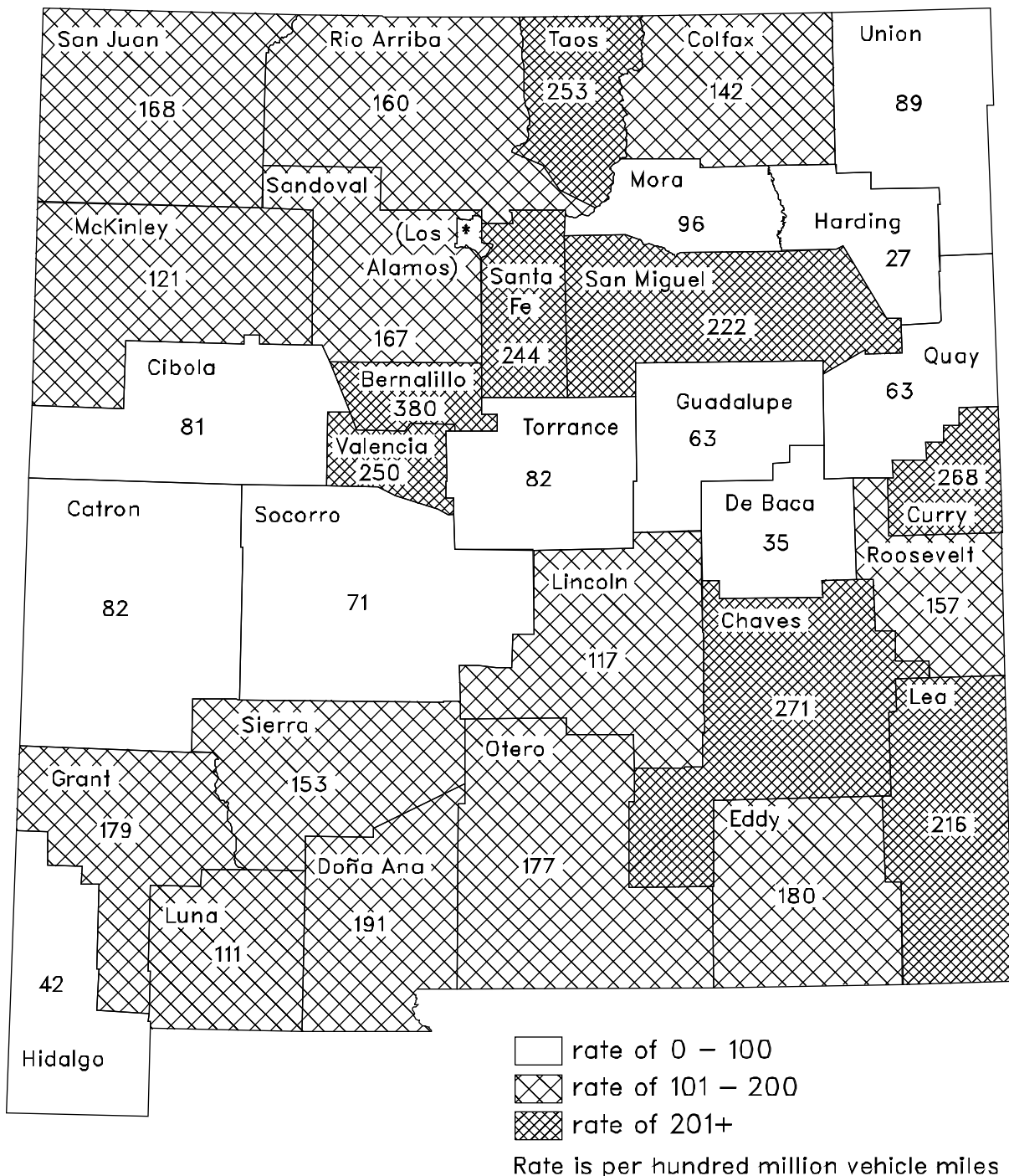
County	Crashes				People		Rates		Economic Loss ¹	100 MVM	Licensed Drivers	Population
	Total	Fatal	Injury	Property Damage	Killed	Injured	Crash Rate	Death Rate				
Bernalillo	19,989	71	7,434	12,484	86	11,159	380	1.64	1,106,862	52.6	376,425	526,088
Catron	108	2	35	71	2	58	82	1.52	14,892	1.3	2,715	2,795
Chaves	1,718	14	584	1,120	18	975	271	2.83	104,348	6.3	41,130	63,001
Cibola	570	14	193	363	17	329	81	2.42	65,908	7.0	14,935	25,928
Colfax	490	4	150	336	5	231	142	1.45	43,146	3.5	10,507	13,718
Curry	1,041	2	314	725	2	468	268	0.52	59,741	3.9	30,157	46,737
De Baca	83	3	16	64	4	47	35	1.71	4,893	2.3	1,729	2,311
Doña Ana	4,003	37	1,664	2,302	42	2,654	191	2.01	276,028	20.9	109,225	168,470
Eddy	1,637	5	532	1,100	5	865	180	0.55	90,761	9.1	37,404	53,256
Grant	828	7	263	558	10	418	179	2.16	63,851	4.6	22,038	31,350
Guadalupe	394	18	132	244	23	260	63	3.68	42,949	6.2	3,073	4,079
Harding	9	1	1	7	1	1	27	3.05	1,213	0.3	703	899
Hidalgo	150	5	54	91	7	104	42	1.95	14,925	3.6	4,566	6,354
Lea	1,390	4	481	905	4	764	216	0.62	90,457	6.4	39,919	56,387
Lincoln	656	9	200	447	11	318	117	1.97	48,045	5.6	14,107	16,000
Los Alamos	299	1	86	212	1	136	118	0.39	14,782	2.5	16,306	18,275
Luna	579	16	213	350	20	400	111	3.83	55,381	5.2	16,641	23,922
McKinley	1,701	27	550	1,124	29	905	121	2.07	161,588	14.0	36,352	67,644
Mora	147	2	55	90	2	97	96	1.30	19,210	1.5	3,229	4,778
Otero	1,259	14	414	831	14	660	177	1.97	93,289	7.1	36,783	55,759
Quay	322	11	100	211	14	174	63	2.72	41,204	5.1	8,083	10,107
Rio Arriba	1,000	20	382	598	27	693	160	4.32	95,673	6.3	26,637	37,780
Roosevelt	437	4	119	314	5	183	157	1.80	31,166	2.8	12,239	18,525
Sandoval	1,601	13	600	988	15	964	167	1.57	118,287	9.6	60,500	85,823
San Juan	2,833	25	1,046	1,762	32	1,726	168	1.90	209,265	16.9	67,794	103,520
San Miguel	975	8	315	652	9	474	222	2.05	74,735	4.4	17,496	28,925
Santa Fe	4,182	22	1,709	2,451	25	2,732	244	1.46	296,450	17.1	88,310	121,791
Sierra	342	6	99	237	6	134	153	2.68	34,302	2.2	9,187	10,989
Socorro	459	7	156	296	11	259	71	1.71	51,049	6.4	11,712	16,250
Taos	948	6	308	634	8	466	253	2.14	83,294	3.7	21,101	26,556
Torrance	422	6	148	268	6	240	82	1.17	44,334	5.1	9,242	14,697
Union	141	3	38	100	3	79	89	1.89	10,383	1.6	3,192	4,111
Valencia	1,111	13	462	636	20	746	250	4.50	101,338	4.4	40,929	62,926
Total	51,824	400	18,853	32,571	484	29,719	207	1.94	3,563,753	249.9	1,194,366	1,729,751

¹ Crash cost estimates are in thousands of dollars, and are based on FHWA Economic Loss Formulae (see page 36).

In 1997 ...

- The overall crash rate in New Mexico was 207.

Crash Rates in New Mexico by County, 1997



* Los Alamos County rate is 118.

WHERE

Crashes in New Mexico by City, 1997

City	Crashes				People	
	Total	Fatal	Injury	Property Damage	Killed	Injured
Alamogordo	735	2	230	503	2	346
Albuquerque	19,420	53	7,221	12,146	60	10,795
Angel Fire	21	0	4	17	0	6
Anthony	64	2	24	38	2	46
Artesia	336	0	81	255	0	137
Aztec	171	0	47	124	0	55
Bayard	53	0	7	46	0	18
Belen	251	1	95	155	1	148
Bernalillo	130	0	42	88	0	66
Bloomfield	122	0	37	85	0	51
Bosque Farms	61	0	28	33	0	41
Capitan	16	1	2	13	1	2
Carlsbad	938	1	325	612	1	531
Carrizozo	13	0	1	12	0	1
Causey	1	0	1	0	0	1
Central	30	0	10	20	0	16
Chama	9	2	4	3	2	5
Cimarron	5	0	0	5	0	0
Clayton	46	0	6	40	0	10
Cloudcroft	23	1	4	18	1	6
Clovis	867	0	247	620	0	368
Columbus	6	0	3	3	0	7
Corrales	79	0	25	54	0	41
Cuba	14	0	6	8	0	9
Deming	312	1	105	206	1	167
Des Moines	2	0	0	2	0	0
Dexter	1	0	1	0	0	3
Dora	1	0	1	0	0	1
Eagle Nest	1	0	1	0	0	1
Elida	2	0	0	2	0	0
Encino	2	0	2	0	0	3
Española	576	1	226	349	1	380
Estancia	2	0	0	2	0	0
Eunice	37	0	11	26	0	15
Farmington	1,593	5	611	977	5	986
Floyd	2	0	0	2	0	0
Fort Sumner	40	0	5	35	0	13
Gallup	919	3	266	650	3	404
Grady	1	0	0	1	0	0
Grants	194	2	67	125	2	99
Hatch	31	0	6	25	0	8
Hobbs	773	1	276	496	1	421
Hurley	1	0	0	1	0	0
Jal	22	0	3	19	0	4
Jemez Springs	1	0	0	1	0	0

Data from this table are not comparable to the data from page 14.

(continued on the next page)

Crashes in New Mexico by City, 1997 (cont.)

City	Crashes				People	
	Total	Fatal	Injury	Property Damage	Killed	Injured
Lake Arthur	2	0	1	1	0	1
Las Cruces	2,862	12	1,184	1,666	13	1,811
Las Vegas	662	2	191	469	2	280
Lordsburg	42	1	11	30	2	16
Los Alamos	293	0	83	210	0	132
Los Lunas	310	3	119	188	3	191
Loving	6	0	2	4	0	2
Lovington	214	0	48	166	0	81
Magdalena	3	0	1	2	0	1
Maxwell	1	0	0	1	0	0
Melrose	6	0	3	3	0	6
Milan	51	0	20	31	0	32
Moriarty	71	0	22	49	0	36
Mosquero	1	1	0	0	1	0
Mountainair	2	0	1	1	0	1
Pecos	8	0	4	4	0	5
Portales	283	0	68	215	0	90
Questa	34	1	11	22	1	17
Raton	184	0	47	137	0	74
Red River	3	0	1	2	0	1
Reserve	6	0	3	3	0	3
Rio Rancho	861	1	298	562	1	452
Roswell	1,308	4	427	877	4	707
Ruidoso	315	0	95	220	0	145
Ruidoso Downs	21	0	6	15	0	11
San Jon	4	0	1	3	0	1
San Ysidro	3	0	2	1	0	2
Santa Fe	2,729	8	1,111	1,610	9	1,726
Santa Rosa	65	1	17	47	1	35
Shiprock	90	2	32	56	2	67
Silver City	487	0	147	340	0	213
Socorro	187	1	47	139	1	79
Springer	8	0	1	7	0	2
Sunland Park	67	0	21	46	0	37
Taos	351	0	101	250	0	141
Tatum	8	0	3	5	0	3
Texico	19	0	6	13	0	8
Tijeras	20	0	11	9	0	17
T or C	184	0	47	137	0	58
Tucumcari	102	0	29	73	0	45
Tularosa	27	0	8	19	0	13
Vaughn	12	0	2	10	0	4
Willard	2	0	0	2	0	0
Williamsburg	3	0	0	3	0	0

Data from this table are not comparable to the data from page 14.

Crash Rates for Selected¹ New Mexico Cities, 1997

City ¹	Crashes ²		Rates ³		Estimated
	Total	Fatal and Injury ⁴	Total	Fatal and Injury ⁴	1996 Population ⁵
Alamogordo	722	90	24.9	3.10	29,036
Albuquerque	13,815	1,956	32.9	4.66	419,681
Artesia	318	36	28.4	3.22	11,197
Aztec	169	21	28.9	3.59	5,842
Belen	243	32	31.0	4.08	7,838
Bernalillo	105	14	14.1	1.88	7,450
Bloomfield	118	16	20.2	2.74	5,830
Bosque Farms	57	10	10.9	1.91	5,234
Carlsbad	926	110	34.9	4.15	26,535
Clovis	857	86	24.7	2.48	34,663
Corrales	76	13	13.0	2.22	5,845
Deming	298	50	21.1	3.53	14,155
Española	534	65	59.3	7.22	9,008
Farmington	1,570	237	41.4	6.25	37,936
Gallup	887	96	43.1	4.66	20,591
Grants	179	27	21.6	3.26	8,286
Hobbs	766	90	27.4	3.22	27,986
Las Cruces	2,663	411	35.6	5.50	74,779
Las Vegas	631	51	38.4	3.10	16,437
Los Alamos	291	33	16.0	1.81	18,212
Los Lunas	287	43	39.8	5.96	7,218
Lovington	207	27	20.9	2.72	9,914
Portales	271	24	23.9	2.11	11,356
Raton	167	16	21.5	2.06	7,766
Rio Rancho	849	97	18.2	2.08	46,565
Roswell	1,298	237	27.3	4.98	47,559
Ruidoso	296	43	51.8	7.53	5,714
Santa Fe	2,674	376	40.2	5.65	66,522
Silver City	471	36	39.2	3.00	12,007
Socorro	171	19	19.8	2.20	8,650
Sunland Park	64	10	6.9	1.08	9,265
Taos	327	26	62.0	4.93	5,270
T or C	172	28	25.9	4.21	6,644
Tucumcari	91	12	14.8	1.96	6,138

- 1 Cities selected are those with a population of 4,000 or more.
- 2 Only crashes investigated by local police departments are included. This is not comparable to previous years.
- 3 Rates are per 1,000 residents.
- 4 Fatal and injury crashes include crashes involving fatal, incapacitating, and visible injuries, but exclude crashes where there was only complaint of injury.
- 5 Population counts are from the Census Bureau (see page 36).

New Mexico's Seven Highest Fatal and Injury Crash Intersections, 1997

Intersection	City	Crashes		
		Total	Fatal	Injury
Airport at Cerrillos Rd	Santa Fe	86	0	39
Montgomery at San Mateo	Albuquerque	110	0	38
Juan Tabo at Lomas	Albuquerque	89	0	36
Coors at Irving	Albuquerque	79	0	36
Academy at Wyoming	Albuquerque	70	0	31
Central at Tramway	Albuquerque	68	0	31
Coors at Paseo Del Norte	Albuquerque	97	0	30

- Intersections are ranked by the total number of fatal and injury crashes. Busy intersections will tend to have the highest number of crashes, but will not necessarily have the highest number of fatal and injury crashes.

New Mexico's Highest Crash Rate Rural Highway Segments, 1997

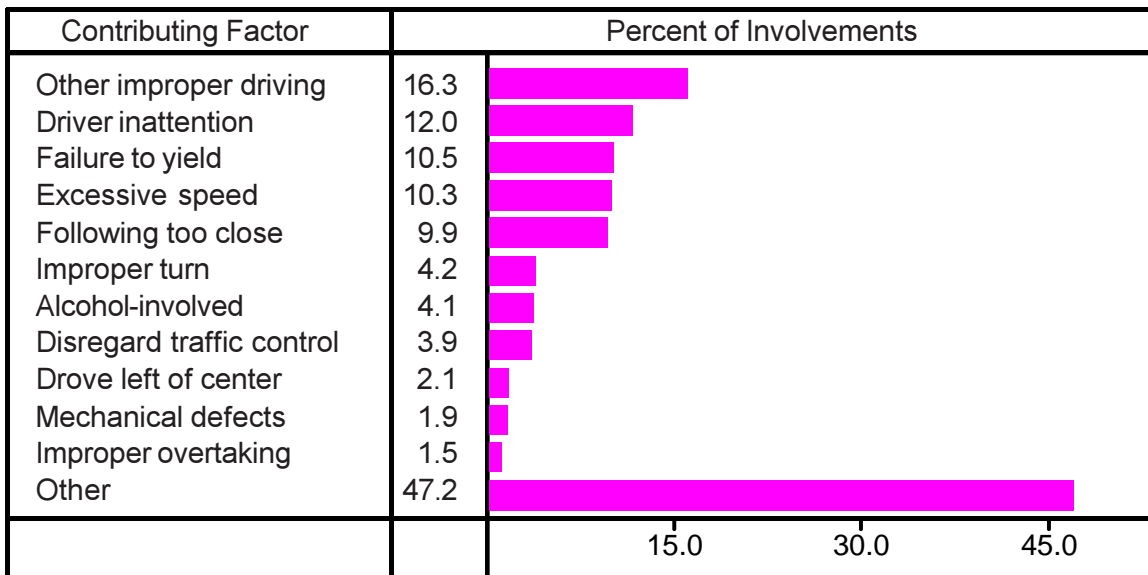
Highway	Milepost	County	Crashes			
			Total	Fatal	Injury	Rate
NM 76	4.6 to 7.8	Santa Fe	31	1	19	887.9
NM 608	0.5 to 2.0	McKinley	10	0	5	675.8
US 84	194.5 to 197.0	Rio Arriba	15	0	12	523.7
NM 76	1.6 to 4.6	Santa Fe	24	1	11	512.5
NM 75	13.4 to 20.5	Taos	16	0	10	455.0
US 84	192.0 to 194.5	Rio Arriba	25	2	8	435.0
US 64	21.9 to 22.7	San Juan	8	0	4	383.6

Map: see inside front cover.

- The highway segment ranking was done on the basis of fatal and injury crashes per million vehicle miles. The most heavily traveled segments are likely to have the most crashes, but will not necessarily have the highest crash rates. Segments selected have high rates compared to segments with similar characteristics.
- The two segments on NM 76 and the two segments on US 84 are adjacent, i.e. they form a single segment on each route. They are presented separately because segments are defined based on similar road characteristics.










CRASH DETAILS

Contributing Factors of Crashes in New Mexico, 1997



- Percent of involvements is the percentage of all vehicles in crashes for which each contributing factor was coded.
- More than one contributing factor may be coded for each vehicle. For 42 percent of all vehicles, no contributing factors were indicated.

Crash Involvements in New Mexico by Vehicle Type, 1997

Vehicle Type	Total	Fatal	Injury	Total
Passenger Car	52,366	229	20,474	
Pickup	27,519	172	9,646	
Van or 4WD	7,852	70	2,875	
Semi	2,355	50	681	
Motorcycle	763	23	643	
Pedestrian	665	69	579	
Pedalcyclist	411	5	363	
Bus	224	3	66	
Other	3,781	33	793	
Total	95,936	654	36,120	25,000 50,000

Crashes Involving Vehicle or Road Defects in New Mexico, 1991 - 1997

Year	All Crashes	Vehicle Defects	% With Vehicle Defects	Road Defects	% With Road Defects
1997	51,824	1,657	3.2	452	0.8
1996	52,166	1,767	3.4	364	0.7
1995	52,377	1,813	3.5	335	0.6
1994	50,275	1,754	3.5	393	0.8
1993	48,729	1,717	3.5	407	0.8
1992	50,227	1,691	3.4	720	1.4
1991	47,218	1,380	2.9	1,113	2.4

CRASH DETAILS

In 1997 ...

- "Other vehicle" and "Overturn" crashes caused 70% of fatalities.

Crashes in New Mexico by Class, 1997

Class	Crashes					People	
	Total	% of Total	Fatal	% of Fatal	Injury	Killed	Injured
Other Vehicle	35,814	69	132	33	13,577	175	22,336
Fixed Object	6,326	12	44	11	1,851	49	2,485
Overturn	3,249	6	131	33	1,832	162	2,992
Parked Vehicle	3,132	6	6	2	287	7	367
Animal	1,228	2	1	0	177	1	240
Other Non-collision	695	1	6	2	185	6	221
Pedestrian	604	1	63	16	526	63	564
Pedalcyclist	387	1	5	1	340	5	358
Other Object	305	1	1	0	42	1	60
Vehicle on Other Road	62	0	7	2	25	10	78
Railroad Train	22	0	4	1	11	5	18
Total	51,824	100	400	100	18,853	484	29,719

- Crash class is based on the first harmful event in the crash, such as colliding with something or overturning.

Among the fixed object crashes ...

- 49 percent involved signs, poles, meters, hydrants, or fences.
- 62 percent of fatal crashes involved trees, guard rails or posts.

Fixed Object Crashes in New Mexico, 1997

Object	Crashes			People	
	Total	Fatal	Injury	Killed	Injured
Sign, Pole, Meter, Hydrant	1,471	2	368	2	455
Fence	1,418	5	294	5	389
Guard Rail or Post	848	15	304	17	430
Median or Curb	631	2	182	2	242
Tree	396	11	174	12	250
Embankment	277	1	132	1	186
Building	125	0	32	0	43
Barricade	99	2	43	2	56
Culvert or Drain	86	1	35	1	51
Cattle Guard	26	0	5	0	6
Bridge or Pier	22	0	8	0	10
Other or Unknown	464	3	150	3	205
Total	5,863	42	1,727	45	2,323

CRASH DETAILS

In 1997 ...

- 77 percent of all **hit-and-run** crashes involved property damage only, compared to the 63 percent of **all** crashes which involved property damage only.
- 86 percent of all crashes happened in clear weather.
- 47 percent of the fatal crashes occurred during the night.

Hit and Run Crashes in New Mexico, 1993 - 1997

Year	Crashes			People	
	Total	Fatal	Injury	Killed	Injured
1997	7,083	9	1,644	9	2,239
1996	7,262	8	1,699	8	2,327
1995	7,467	16	1,732	16	2,382
1994	6,812	16	1,548	17	2,117
1993	6,061	19	1,241	19	1,671





Crashes by Weather Conditions in New Mexico, 1997

Weather Condition	Crashes				People	
	Total	Fatal	Injury	Property Damage	Killed	Injured
Clear	44,351	350	16,361	27,640	427	25,834
Rain	3,197	22	1,213	1,962	26	1,925
Snow, Sleet	3,009	14	843	2,152	16	1,261
Dust, Wind	582	6	198	378	7	301
Fog	139	1	43	95	1	76
Other	509	6	175	328	6	284
Total	51,787	399	18,833	32,555	483	29,681

Crashes by Lighting Conditions in New Mexico, 1997

Lighting Condition	Crashes				People	
	Total	Fatal	Injury	Property Damage	Killed	Injured
Daylight	37,563	193	13,686	23,684	245	21,352
Dark (Unlighted)	6,288	141	2,211	3,936	159	3,614
Dark (Lighted)	5,730	46	2,180	3,504	54	3,496
Dusk	1,543	11	570	962	15	924
Dawn	546	7	168	371	9	260
Other	116	0	19	97	0	29
Total	51,786	398	18,834	32,554	482	29,675












Residence of Drivers in New Mexico Crashes, 1997

Residence	Total	Fatal	Injury	Total
Local	52,613	204	21,379	
Elsewhere in NM	24,114	189	9,544	
Outside NM	7,229	128	2,680	
Unknown	2,650	109	914	
Total	86,606	630	34,517	25,000 50,000

Of drivers ...

- Teenagers ages 15-19 had the highest crash involvement rate.
- 69 drivers of every 1,000 drivers were in crashes during 1997.
- On average 10 drivers were involved in crashes every hour in 1997

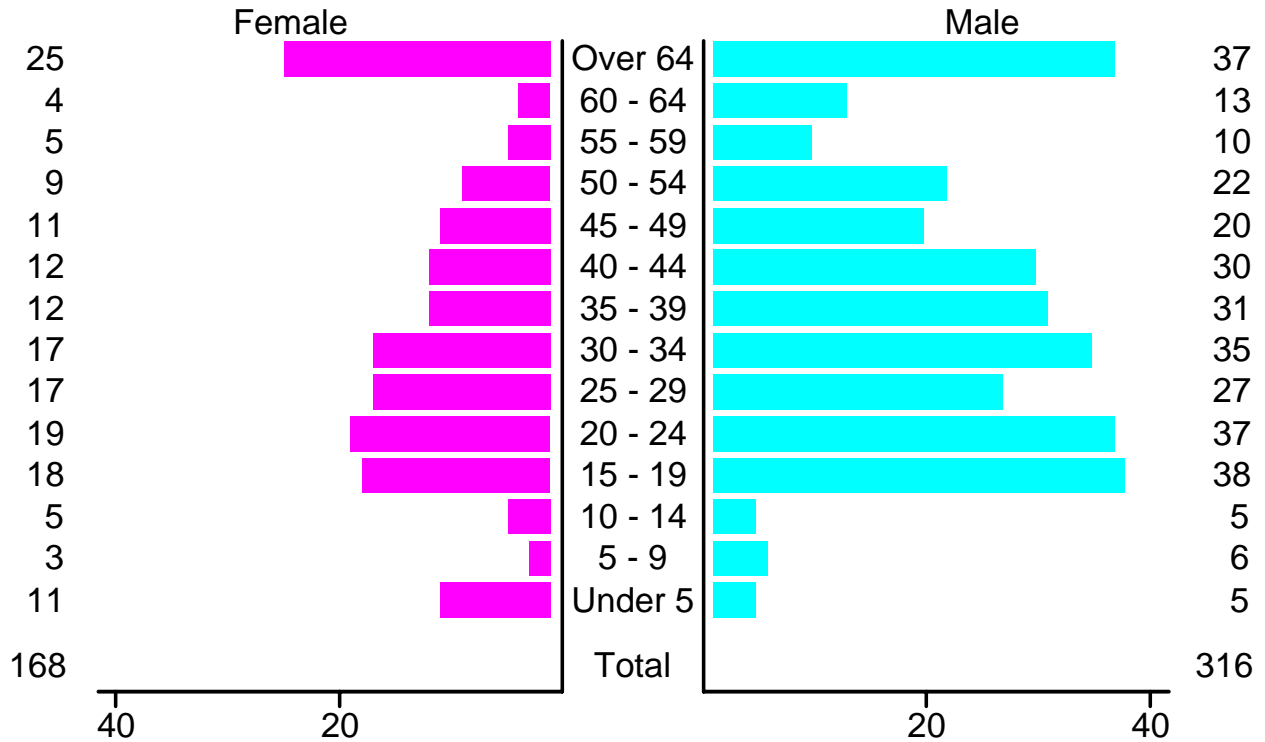
**New Mexico Drivers in Crashes, 1997
Involvements by Age**

Age	Driver Involvements	July 97 Drivers	Involvements per 1,000 drivers
15-19	13,414	77,561	172.95 
20-24	10,966	102,907	106.56 
25-29	9,603	113,752	84.42 
30-34	8,951	121,477	73.68 
35-39	8,874	137,747	64.42 
40-44	7,825	133,171	58.76 
45-49	6,265	121,428	51.59 
50-54	4,705	97,189	48.41 
55-59	3,219	74,480	43.22 
60-64	2,444	62,642	39.02 
Over 64	6,500	151,930	42.78 
Total	82,766	1,194,284	69.30

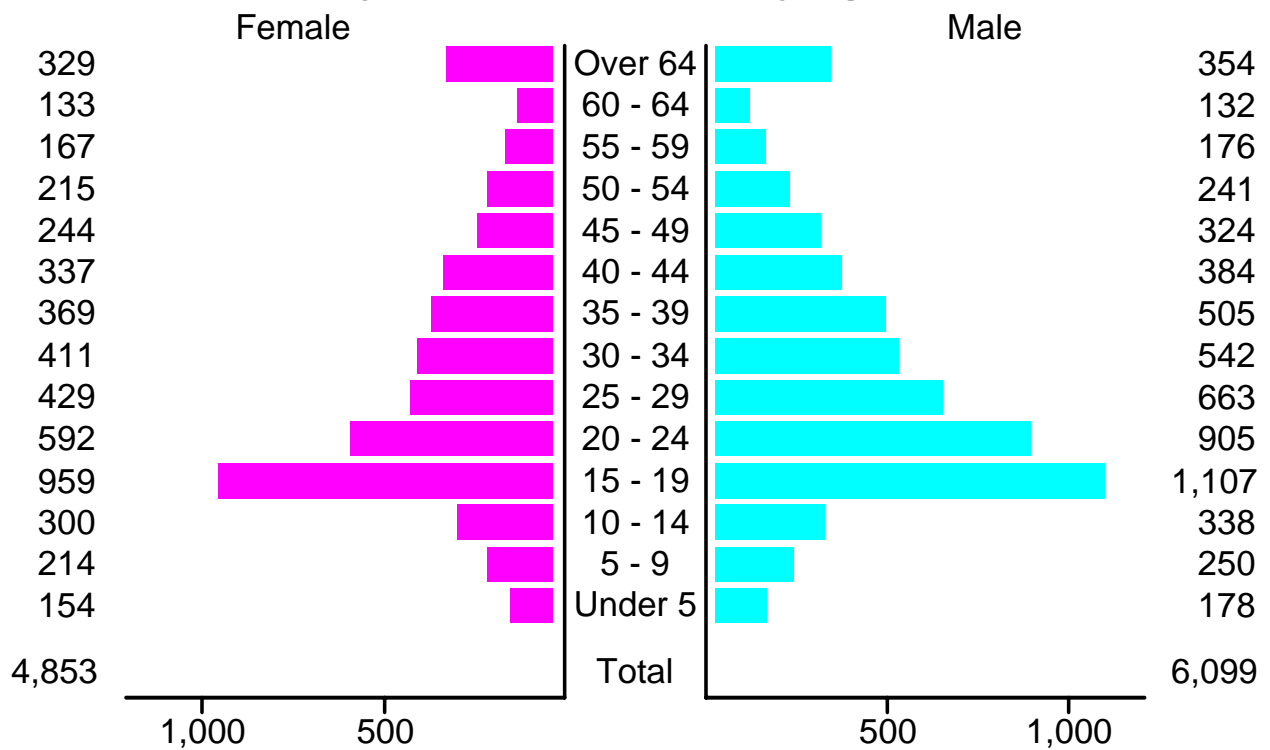
In 1997 ...

- People ages 15 through 19 accounted for 11 percent of all traffic deaths, and 19 percent of serious injuries even though they accounted for only 6 percent of licensed drivers.

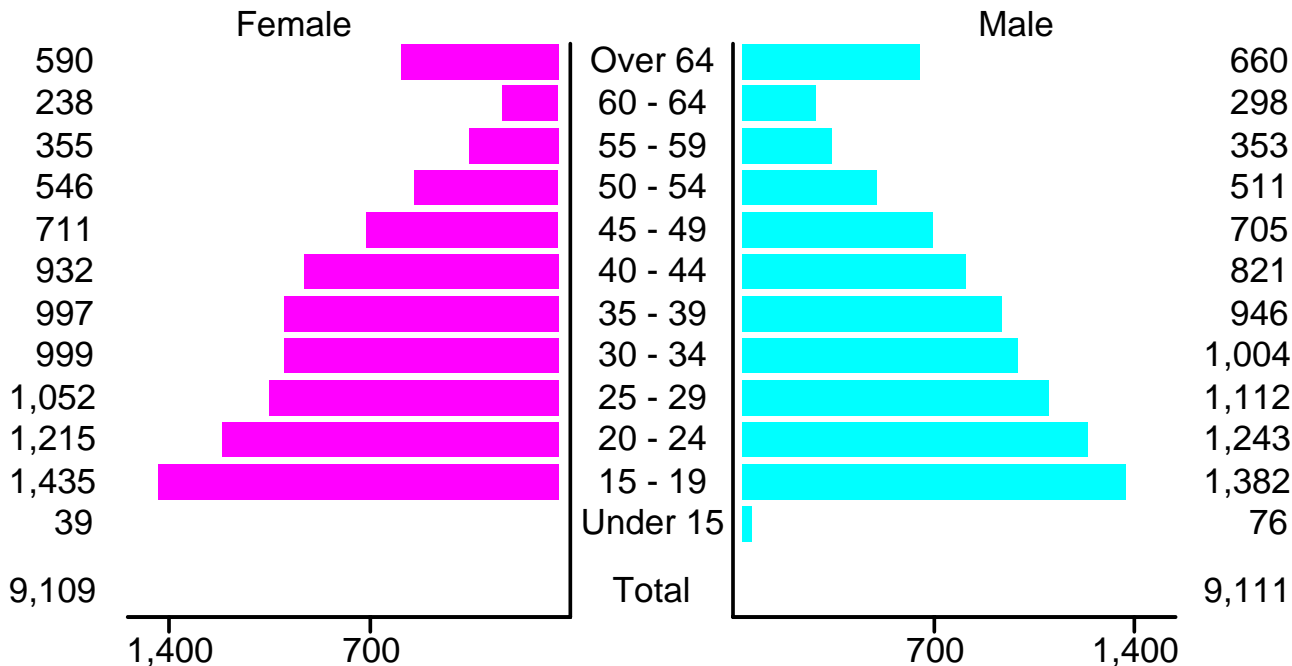
Crash Fatalities in New Mexico by Age and Sex, 1997



Serious Injuries in New Mexico by Age and Sex, 1997



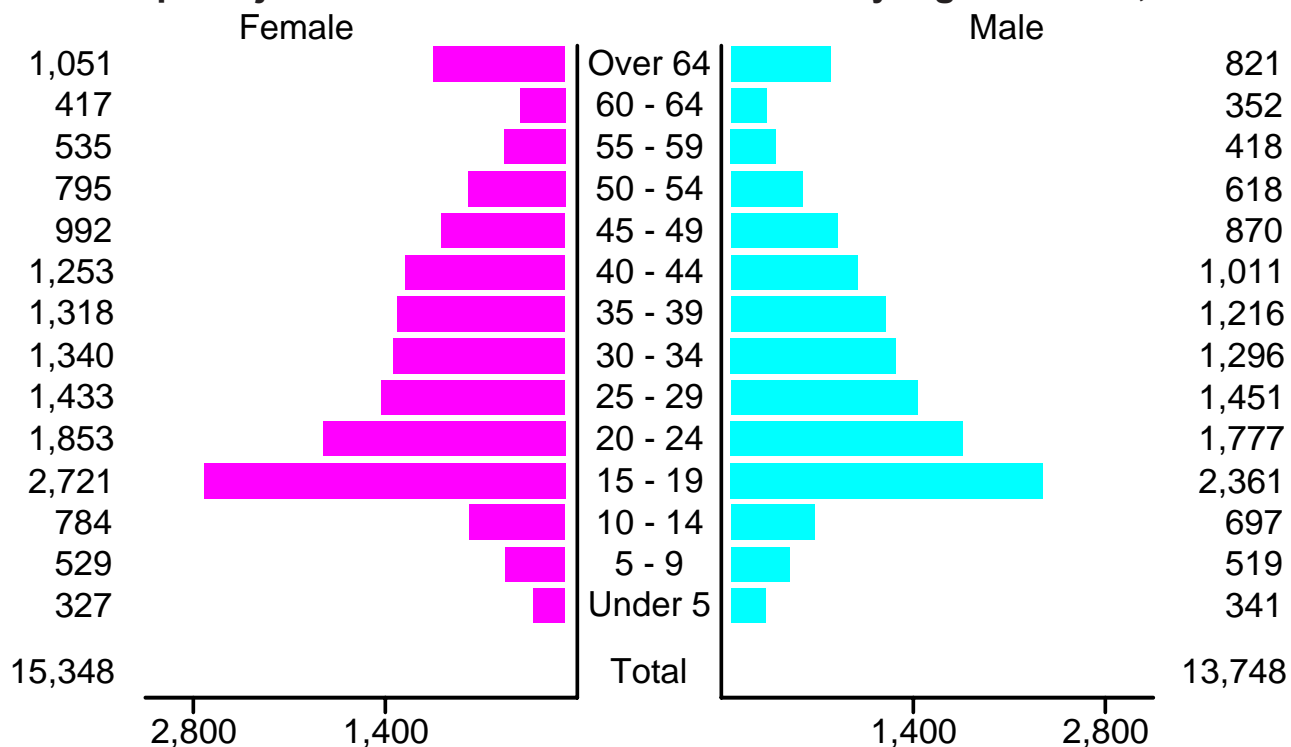
Drivers Injured in Crashes in New Mexico by Age and Sex, 1997



In 1997 ...

- 26 percent of all females involved in crashes were injured, compared to 19 percent of all males.

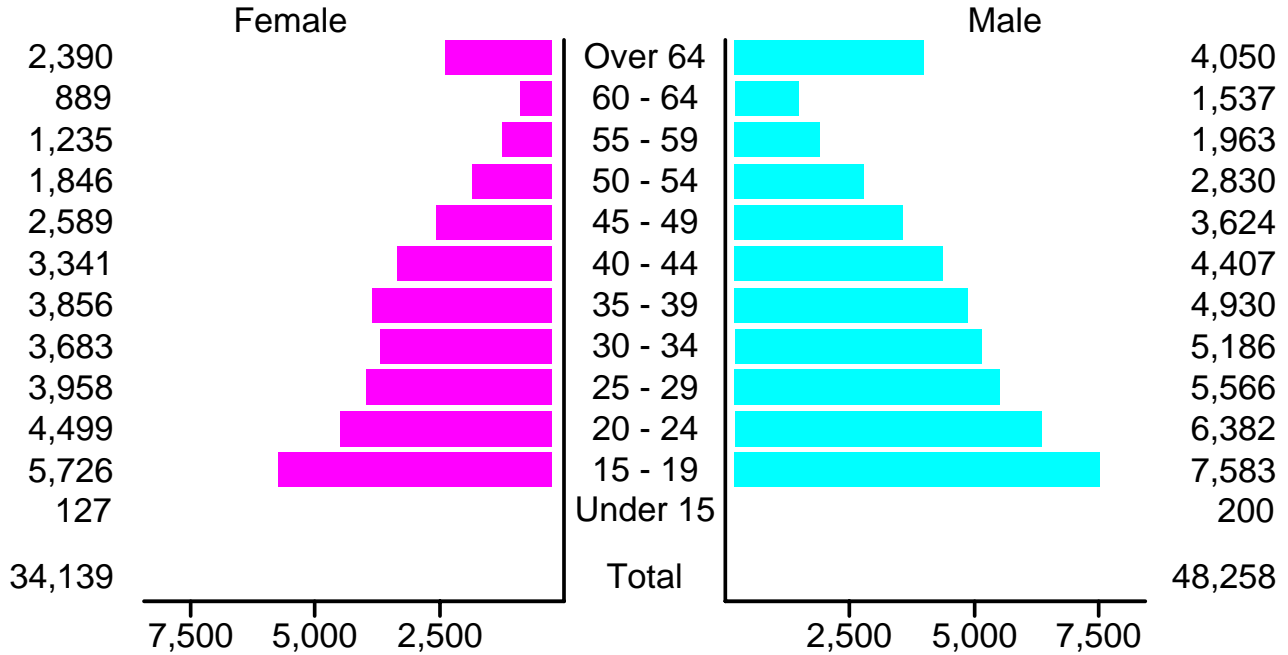
People Injured in Crashes in New Mexico by Age and Sex, 1997



In 1997 ...

- Males accounted for 59 percent of the drivers in crashes, but they represented only 50 percent of all licensed drivers in New Mexico.

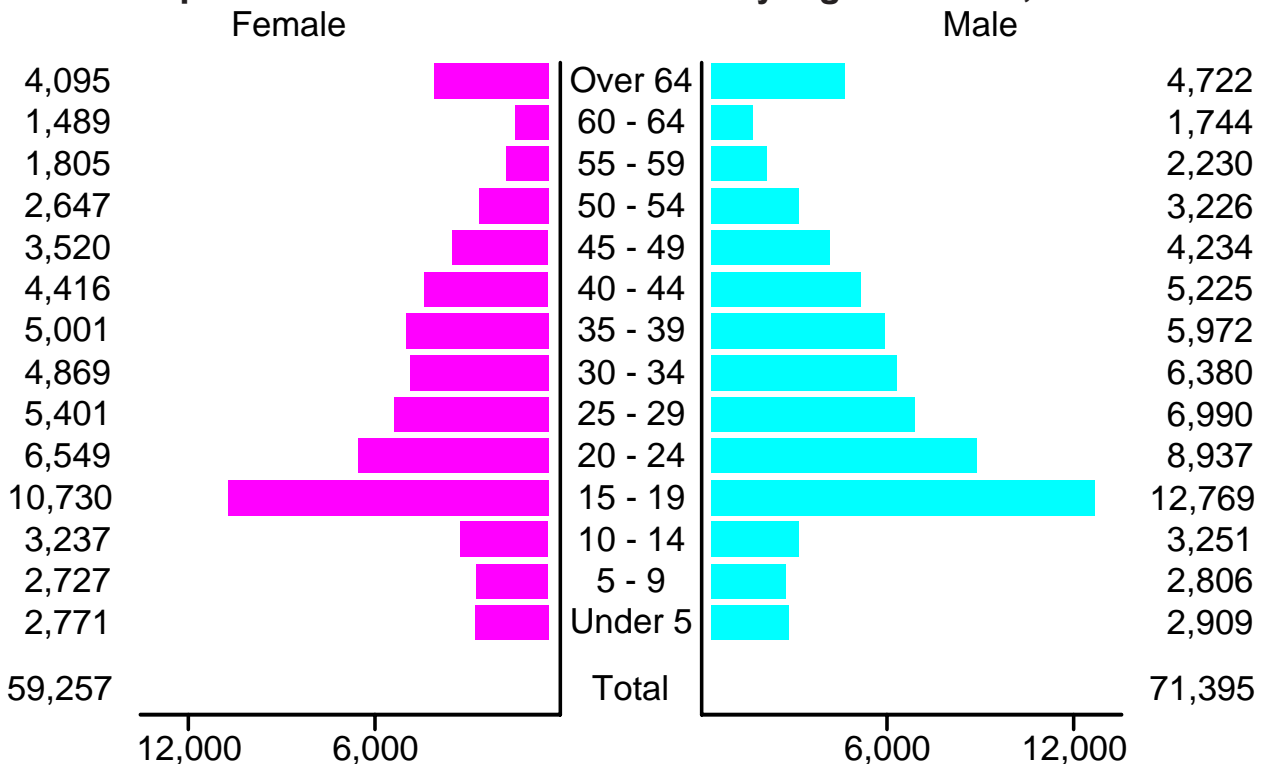
Drivers in Crashes in New Mexico by Age and Sex, 1997



In 1997 ...

- 18 percent of people in crashes are 15-19 year olds.

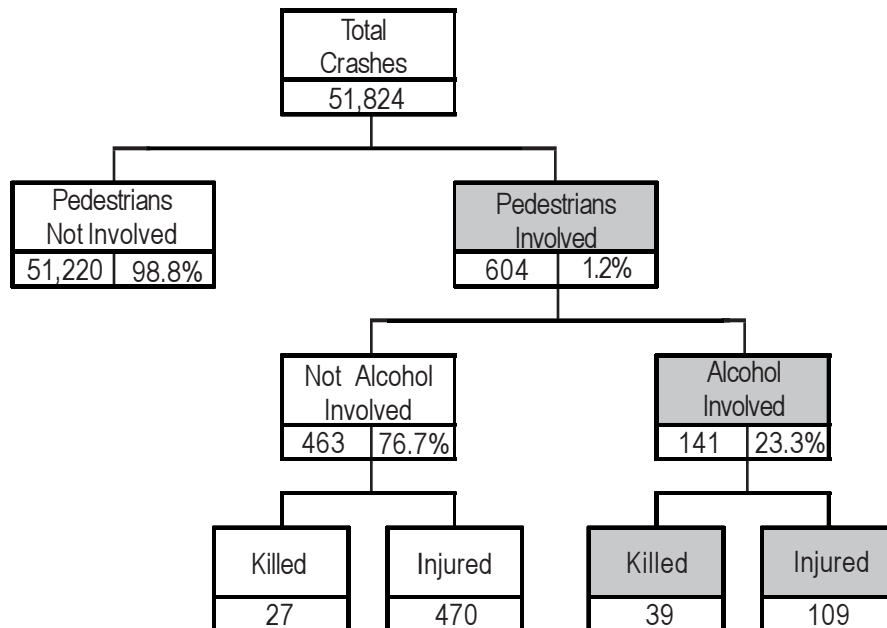
People in Crashes in New Mexico by Age and Sex, 1997



In 1997 ...

- 59 percent of pedestrian deaths were alcohol-involved.

Alcohol-involved Pedestrian Crashes in New Mexico, 1997



Seven Counties with Highest Pedestrian Death Rates, 1997

County	Pedestrians in Crashes			Deaths per 100 MVM
	Total	Killed	Injured	
Cibola	14	4	10	0.60
San Juan	45	10	35	0.60
McKinley	41	8	31	0.59
San Miguel	12	2	10	0.47
Sierra	7	1	6	0.46
Valencia	10	2	8	0.46
Otero	22	3	19	0.42

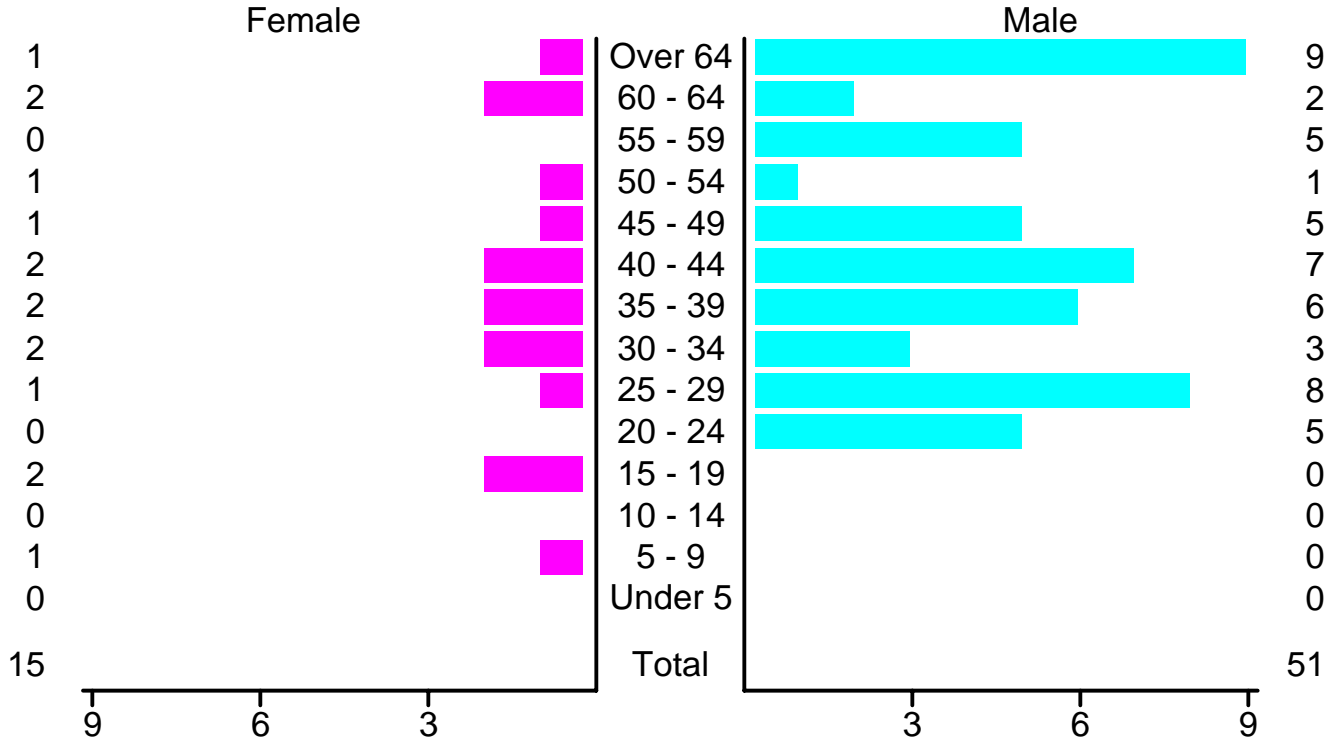
0.3 0.6

PEDESTRIANS

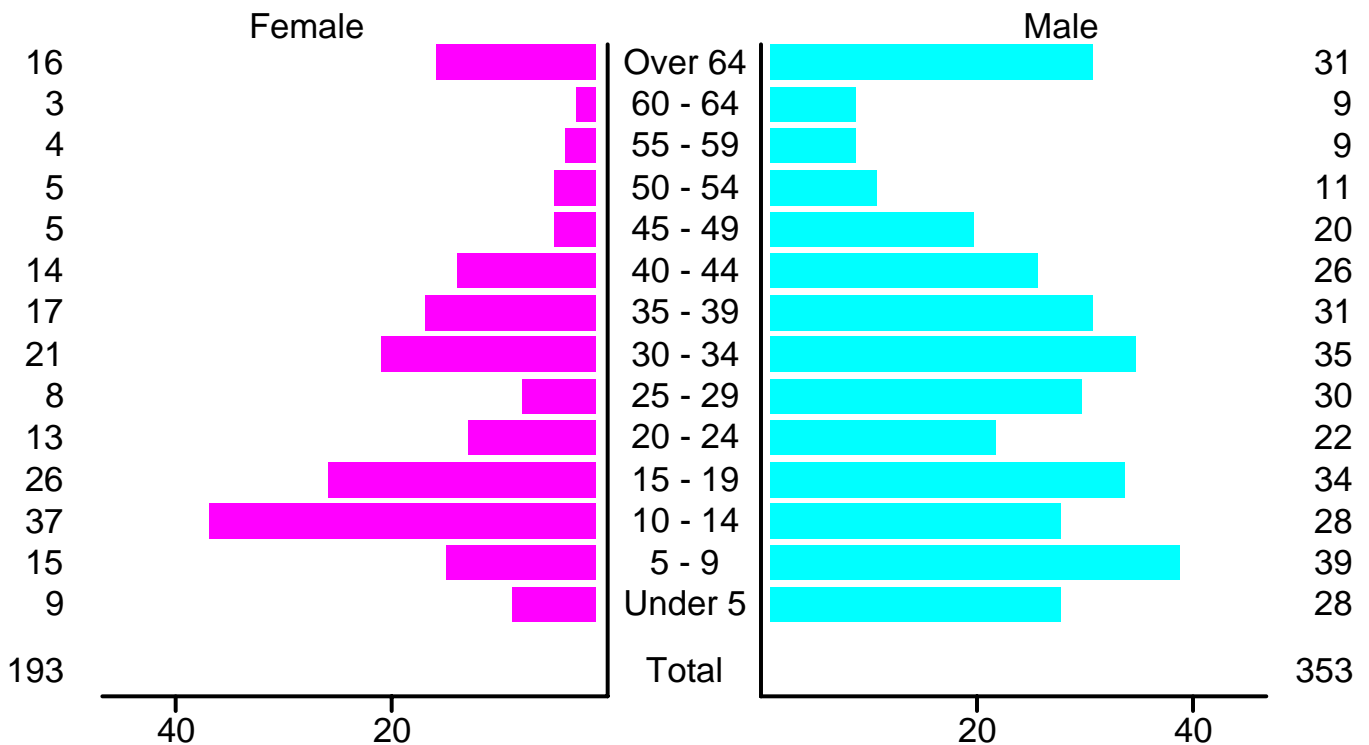
In 1997 ...

- 80 percent of pedestrian deaths involved pedestrian error.

Pedestrians Killed in Crashes in New Mexico by Age and Sex, 1997



Pedestrians Injured in Crashes in New Mexico by Age and Sex, 1997

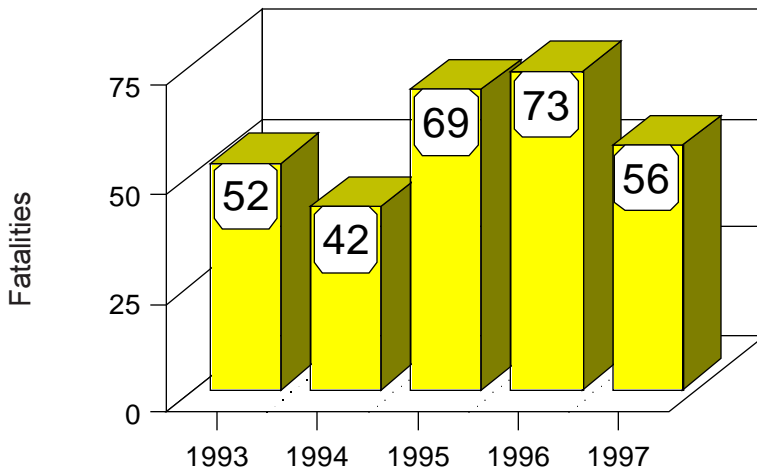


Teenagers in Crashes in New Mexico by Vehicle Type, 1997

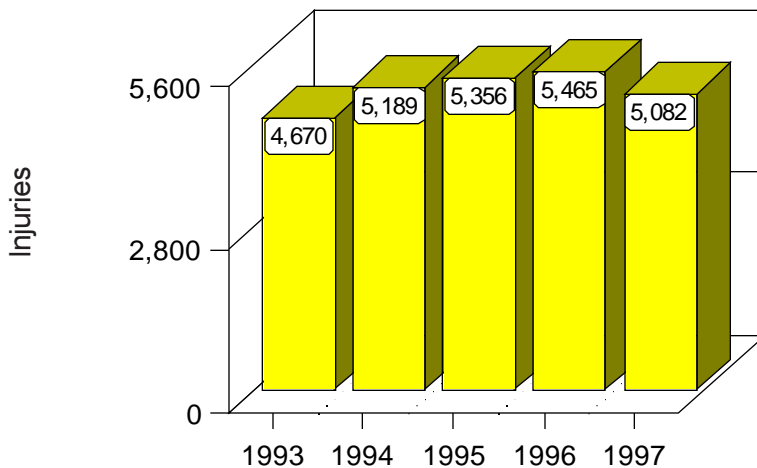
Vehicle Type	Drivers			Killed	Injured
	Total	Fatal	Injury		
Passenger Car	8,972	39	3,635	26	3,484
Pickup	3,500	17	1,287	9	1,101
Motorcycle	102	2	88	2	102
Van or 4WD	71	7	18	6	24
Pedestrian	62	2	60	2	60
Pedalcyclist	43	1	38	1	38
Semi	9	0	5	1	3
Bus	5	0	3	0	7
Other	655	5	251	9	263
Total	13,419	73	5,385	56	5,082

For this page, drivers and victims are teenagers (people between the ages of 15 and 19). Victims are teenagers killed or injured in crashes regardless of the age of the driver.

Teenagers Killed in Crashes in New Mexico, 1992 - 1997



Teenagers Injured in Crashes in New Mexico, 1992 - 1997



Teenage Crash Facts in New Mexico, 1997

- Of all drivers in crashes, 16 percent were teenagers, although teenagers comprised only 6 percent of New Mexico's drivers.
- The number of teenage fatalities decreased from 73 to 56 in 1997.
- Male teenagers died in crashes more than twice as often as female teenagers.
- 40 percent of teenage crash deaths involved alcohol.
- A teenager was killed in a traffic crash every seven days and one was injured every 103 minutes.
- Teenage occupants' self-reported seatbelt use was 89 percent, while that of all occupants was 95 percent.
- 23 percent of crashes involving teenage drivers occurred at night, while only 19 percent of all crashes occurred at night.

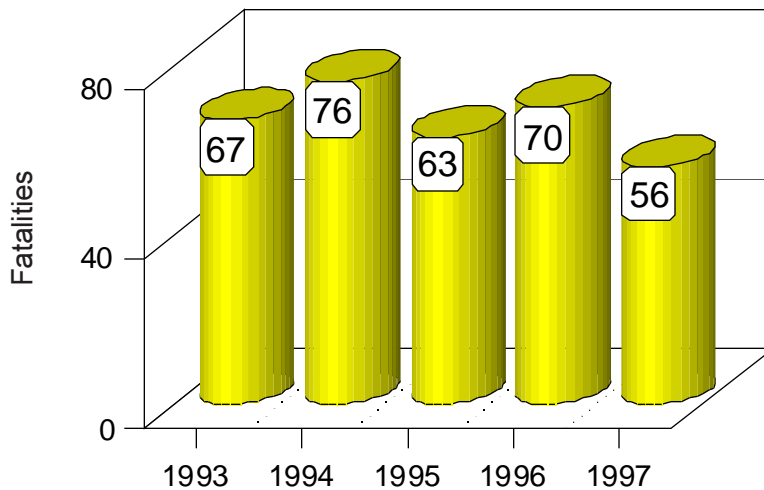
YOUNG ADULTS

Young Adults in Crashes in New Mexico by Vehicle Type, 1997

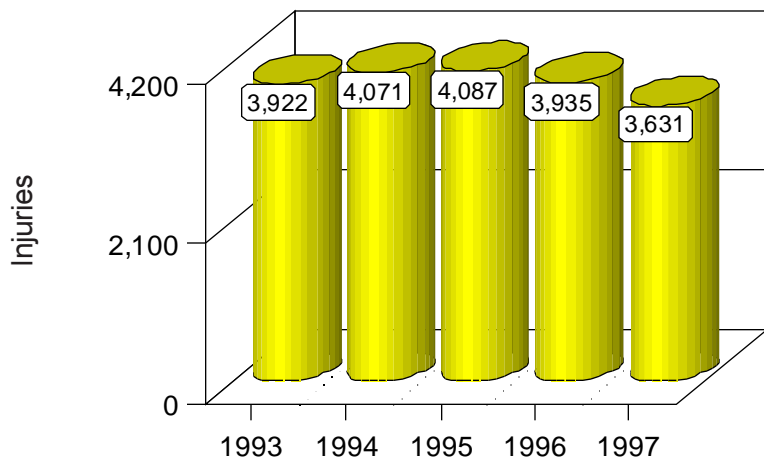
Vehicle Type	Drivers			Victims	
	Total	Crash Severity		Killed	Injured
		Fatal	Injury		
Passenger Car	6,906	32	2,807	25	2,401
Pickup	3,081	16	1,175	14	857
Semi	124	1	35	0	12
Motorcycle	113	3	96	4	105
Van or 4WD	110	1	43	1	24
Pedalcyclist	45	0	42	0	41
Pedestrian	40	5	35	5	35
Bus	17	0	5	0	1
Other	534	8	189	7	155
Total	10,970	66	4,427	56	3,631

For this page, drivers and victims are young adults (people between the ages of 20 and 24). Victims are all young adults killed or injured in crashes regardless of the age of the driver.

Young Adults Killed in Crashes in New Mexico, 1992 - 1997



Young Adults Injured in Crashes in New Mexico, 1992 - 1997



Young Adult Crash Facts in New Mexico, 1997

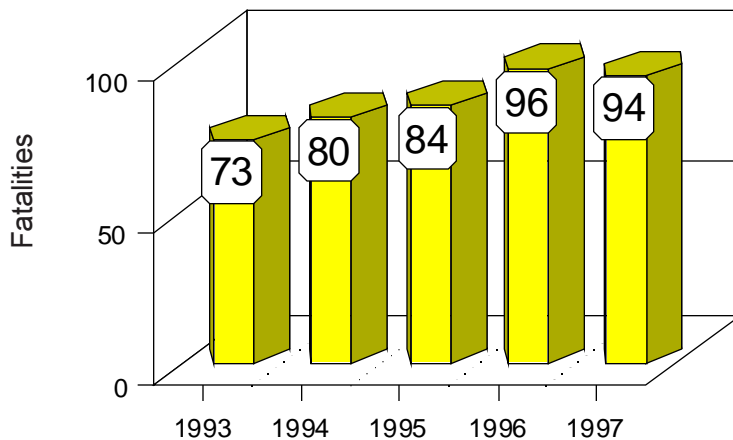
- 13 percent of all drivers in crashes were young adult drivers, although young adults comprised only 9 percent of New Mexico's drivers.
- The number of fatalities among young adults decreased from 70 to 56 in 1997.
- Young adult males died in crashes twice as often as young adult females.
- 55 percent of crash deaths among young adults involved alcohol.
- A young adult was killed in a traffic crash every seven days and one was injured every 145 minutes.
- Young adult occupants self-reported seatbelt use was 89 percent, while that of all occupants was 95 percent.

Senior Citizens in Crashes in New Mexico by Vehicle Type, 1997

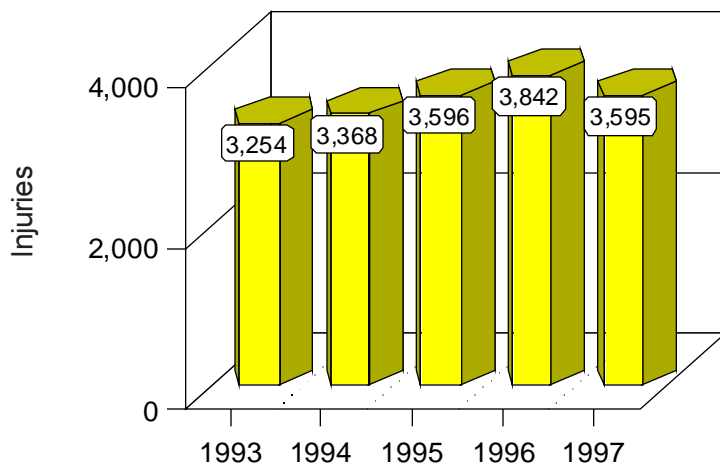
Vehicle Type	Drivers				Victims	
	Total	Crash Severity		Killed	Injured	
		Fatal	Injury			
Passenger Car	7,336	41	2,838	41	2,326	
Pickup	3,210	31	1,097	21	757	
Semi	288	13	88	2	39	
Van or 4WD	155	4	45	1	24	
Pedestrian	89	18	71	19	72	
Bus	40	2	9	1	6	
Motorcycle	35	0	31	0	31	
Pedalcyclist	10	1	9	1	9	
Other	1,001	9	370	8	331	
Total	12,164	119	4,558	94	3,595	

For this page, drivers and victims are senior citizens (people age 55 and older). Victims are all seniors killed or injured in crashes regardless of the age of the driver.

Senior Citizens Killed in Crashes in New Mexico, 1992 - 1997



Senior Citizens Injured in Crashes in New Mexico, 1992 - 1997



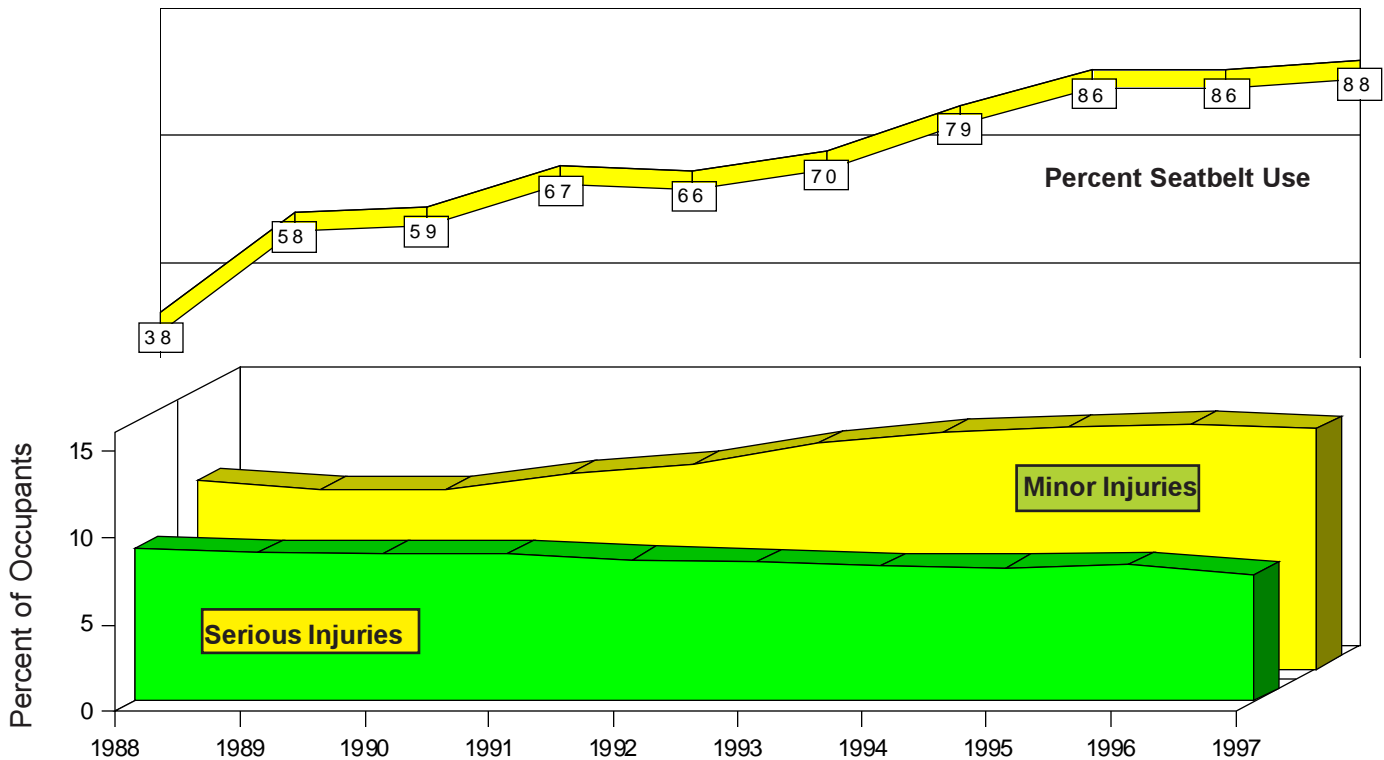
Senior Citizen Crash Facts in New Mexico, 1997

- 15 percent of all drivers in crashes were seniors, although seniors comprised 24 percent of New Mexico's drivers.
- The number of senior fatalities decreased from 96 to 94 in 1997.
- Male seniors died in crashes 76 percent more frequently than did female seniors.
- Alcohol was a contributing factor in 26 percent of all crash deaths involving seniors.
- A senior was killed in a traffic crash every four days and one was injured every 146 minutes.
- Senior occupants' self-reported seatbelt use was 94 percent while that of all occupants was 95 percent.

SEATBELT

The mandatory seatbelt law for drivers and front-seat passengers in cars became effective on January 1, 1986. A similar law for drivers and front-seat passengers riding in pickups became effective on June 16, 1989. The fine for non-compliance is \$25.00.

Observed Seatbelt Usage and Crash Injury Severity for Front-seat Occupants, 1988 - 1997



Source: see page 36.

Since 1991, the proportion of people injured in crashes has increased, perhaps due to higher driving speeds. However, as observed seatbelt usage has increased there has been a noticeable shift from more severe to less severe injuries. This is particularly evident between 1990 and 1995, where a steady increase in minor injuries coincided with a consistent decrease in serious injuries.

Crash Injuries in New Mexico by Reported Seatbelt Usage, 1997

Severity	Belt worn ¹		Belt not worn		Total	
	Number	Percent	Number	Percent	Number	Percent
Killed	118	0.1	219	3.4	337	0.3
Incapacitating injury	3,255	2.8	902	14.1	4,157	3.4
Visible injury	3,951	3.4	1,068	16.7	5,019	4.1
Complaint of injury	16,401	14.1	932	14.6	17,333	14.1
Unhurt	92,822	79.6	3,281	51.2	96,103	78.2
Total	116,547	100.0	6,402	100.0	122,949	100.0

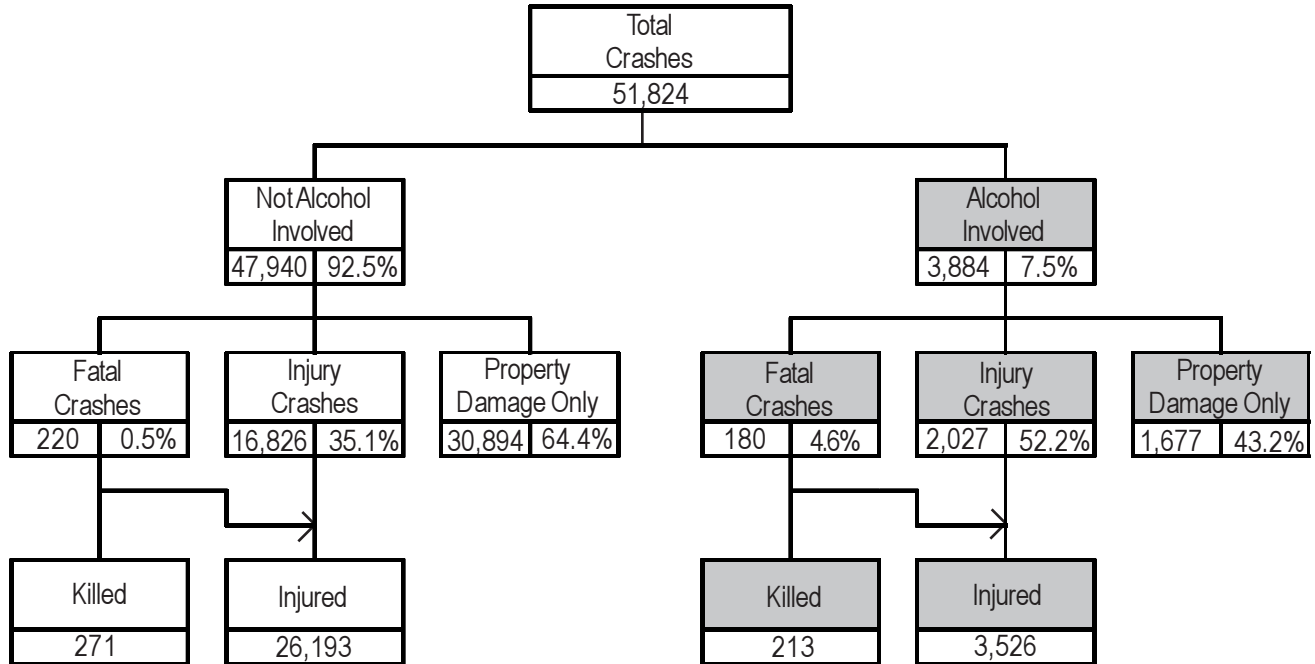
¹ In order to avoid citations, some people in less severe crashes may have reported wearing a seatbelt when they were not.

- Information on this page only includes passenger cars, pickups, and vans or 4WD.

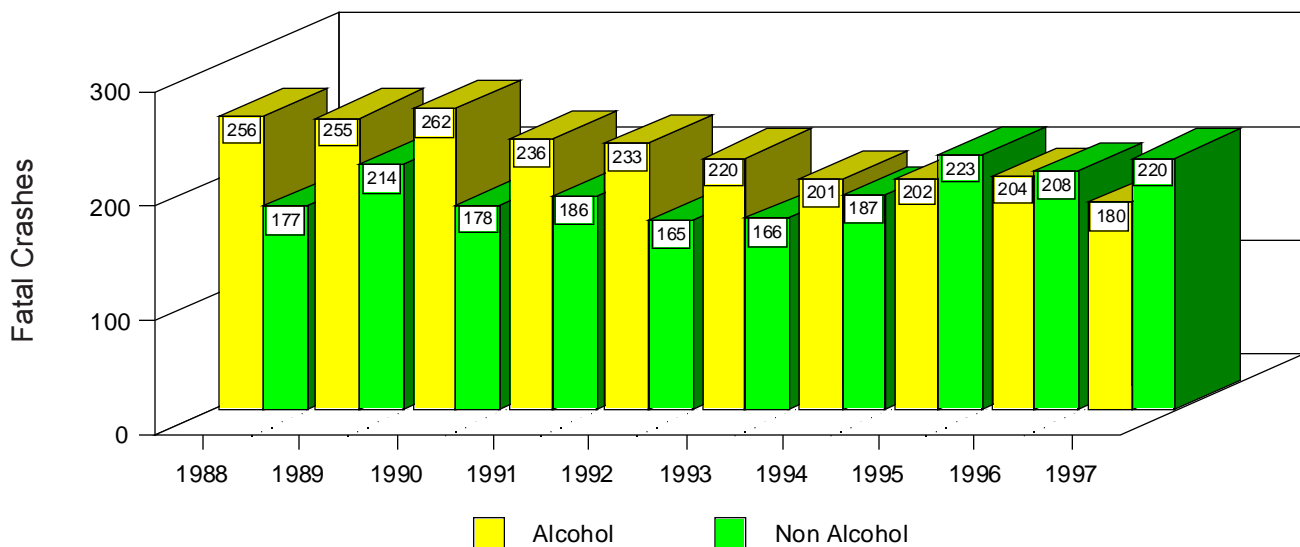
In 1997 ...

- 45 percent of all fatal crashes involved alcohol.
- A person died in an alcohol-involved crash every 41 hours.
- A person was injured in an alcohol-involved crash every 149 minutes.
- An alcohol-involved crash occurred every 135 minutes.

Crashes in New Mexico by Alcohol Involvement, 1997



Fatal Crashes in New Mexico by Alcohol Involvement, 1988 - 1997



ALCOHOL

In 1997 ...

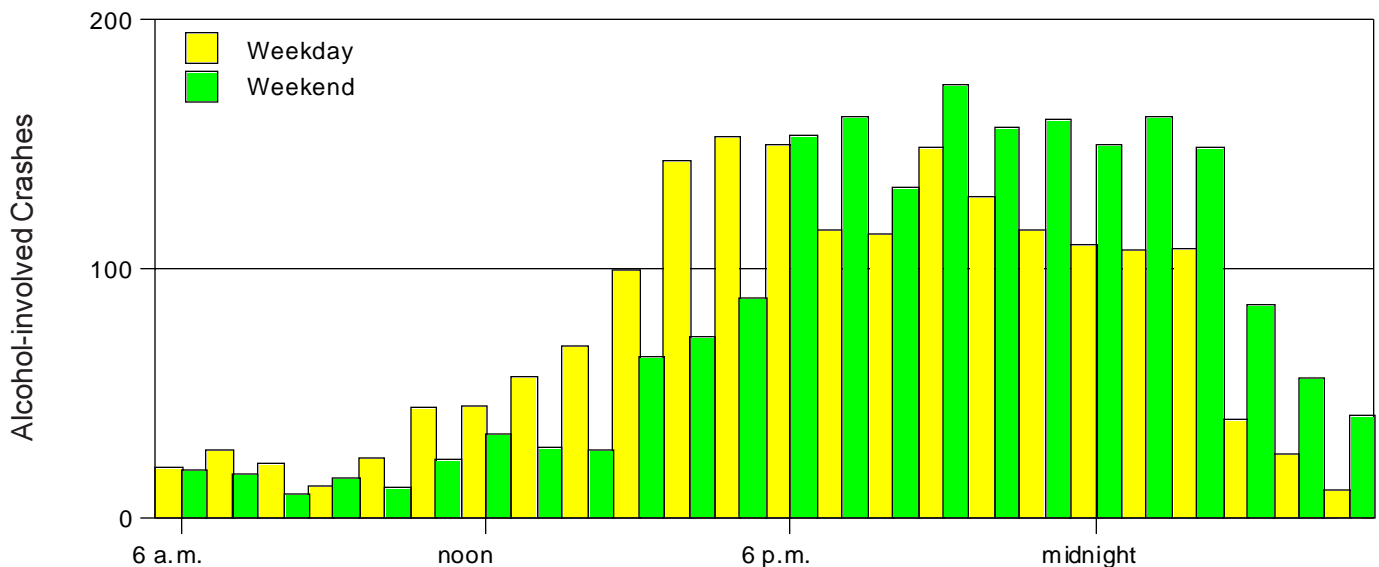
- 57 percent of all alcohol-involved fatal crashes occurred on Friday, Saturday, or Sunday.
- 43 percent of all alcohol-involved crashes happened on Friday or Saturday.
- More alcohol-involved crashes occurred between 4 p.m. and 5 p.m. than any other hour on weekdays.

Alcohol-involved Crashes in New Mexico by Day of the Week, 1997

Day	Total		Fatal	
Sunday	496		30	
Monday	353		18	
Tuesday	427		20	
Wednesday	424		16	
Thursday	521		24	
Friday	773		34	
Saturday	882		38	
Total	3,876		180	

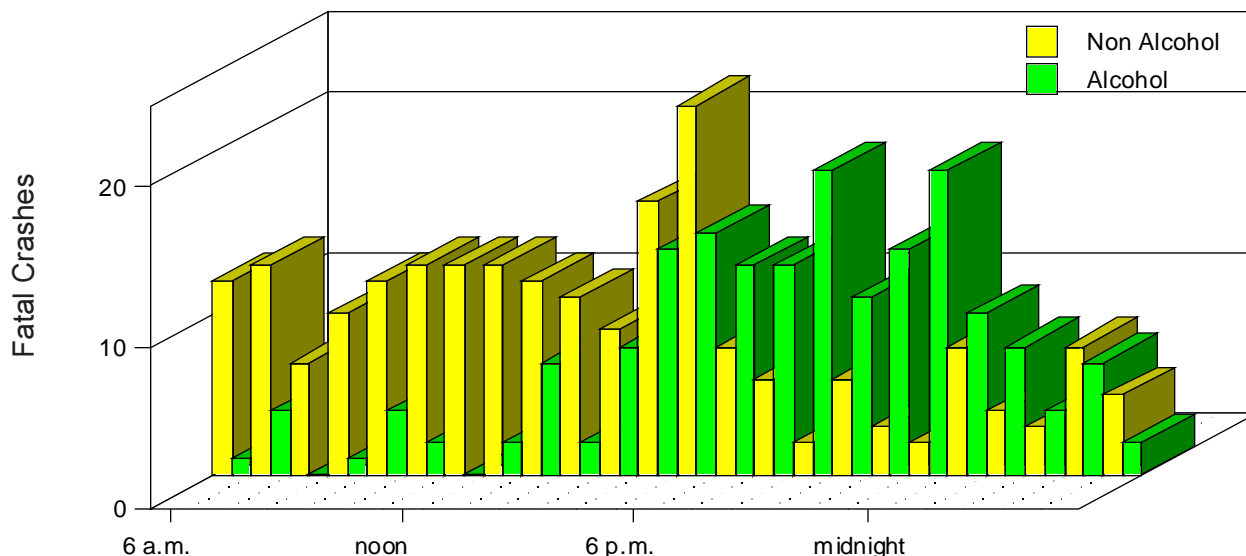
• For this table, each day was considered to run from 6:00 a.m. to 5:59 a.m. the following morning.

Alcohol-involved Crashes in New Mexico by Hour of the Day, 1997



• The weekend is defined as beginning on Friday evening at 6:00 p.m. and ending on Monday morning at 5:59 a.m. For perspective, the weekend period has 60 hours total, while the weekday period consists of 108 hours.

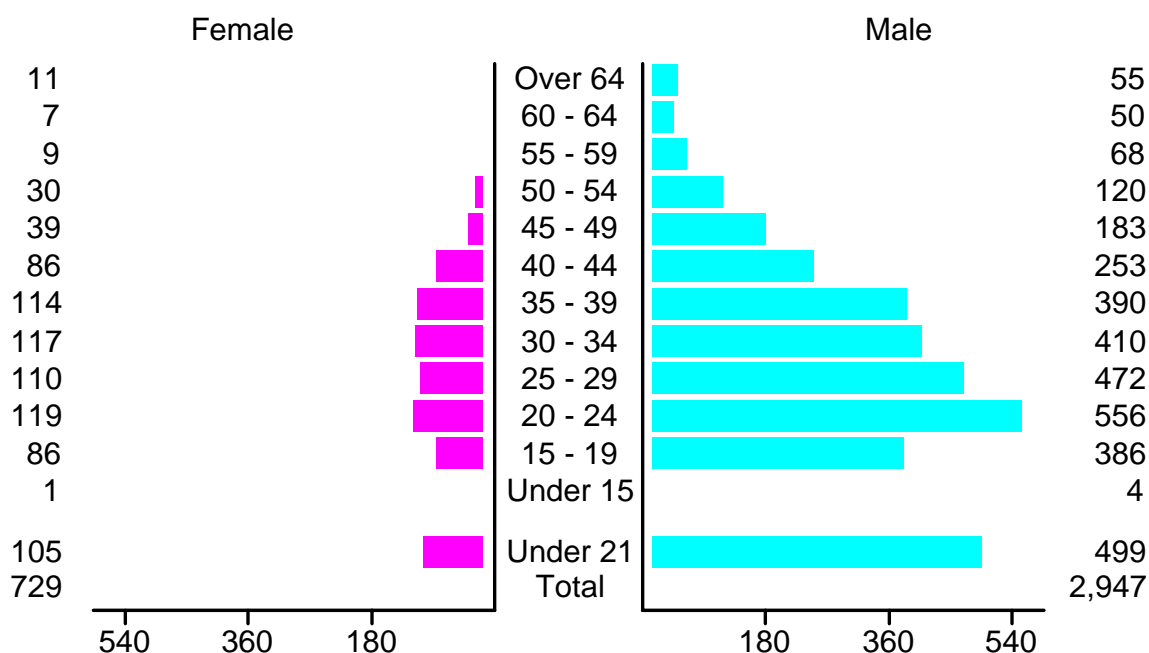
Fatal Crashes in New Mexico by Hour of the Day and Alcohol Involvement, 1997



In 1997 ...

- 16 percent of the alcohol-involved drivers in crashes were less than 21 years old; this percentage is down 2 percent from 1996 and up 2 percent from 1995.
- Male drivers are more than four times as likely as female drivers to be in alcohol-involved crashes.

Alcohol-involved Drivers in Crashes in New Mexico by Age and Sex, 1997

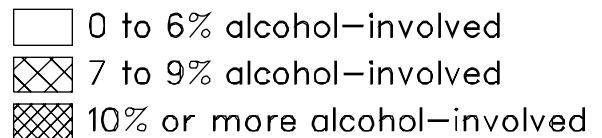
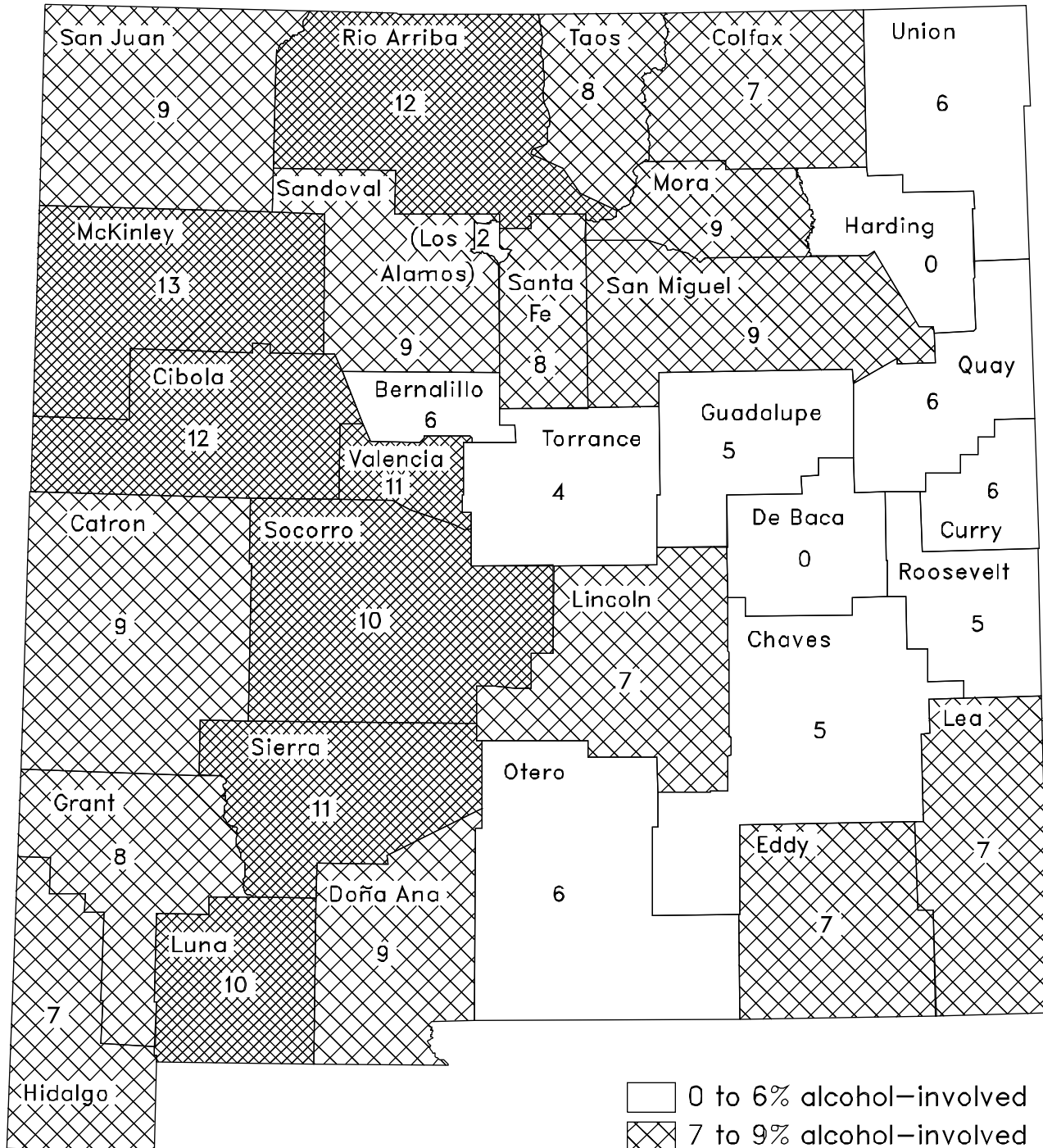


ALCOHOL

Percent Alcohol-involved Crashes in New Mexico by County, 1997

In 1997 ...

- 7.5 percent of the crashes in New Mexico were alcohol-involved crashes.



MOTORCYCLES

Motorcyclists in Crashes in New Mexico, 1988 - 1997

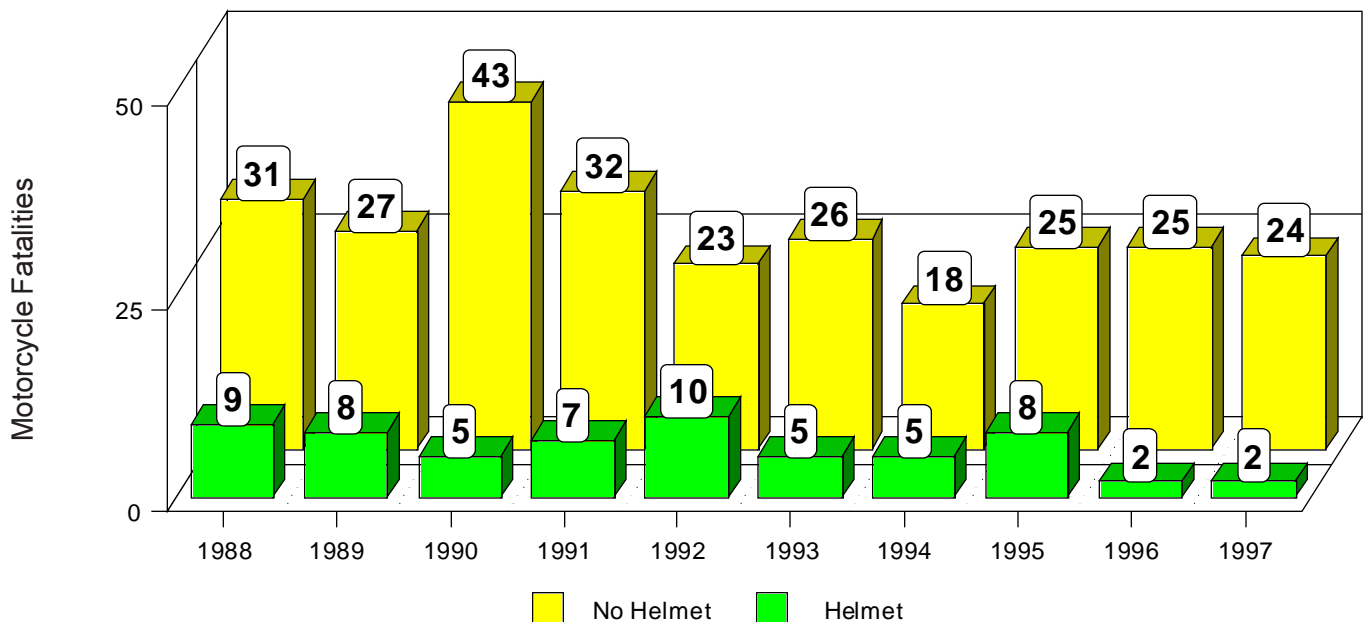
Year	Number of riders ¹	Number of fatalities	Motorcycle registrations
1997	870	26	31,512
1996	1,007	27	31,341
1995	1,117	33	31,146
1994	1,179	23	31,158
1993	1,273	31	31,217
1992	1,284	33	30,466
1991	1,290	39	31,975
1990	1,339	48	30,696
1989	1,525	35	38,528
1988	1,577	40	35,400

1 Riders include drivers and passengers on motorcycles.

In 1997 ...

- 92 percent of all the people who died in motorcycle crashes were not wearing helmets.

Motorcycle Fatalities in New Mexico, 1988 - 1997



MOTORCYCLES

Motorcyclists' Helmet Usage and Injuries in New Mexico, 1997







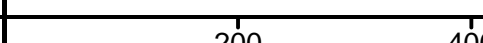
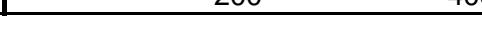
Injury	With helmet	Without helmet	Total
Killed	2	24	26
Incapacitating	72	145	217
Visible injury	129	227	356
Complaint	55	85	140
Unhurt	43	82	125
Total	301	563	864

Motorcyclists in Crashes in New Mexico by Age, 1997

Driver Age	Drivers			Riders ¹	
	Total	Crash Severity		Killed	Injured
		Fatal	Injury		
Under 15	36	0	36	0	51
15-19	102	2	88	2	100
20-24	113	3	96	3	104
25-29	96	3	84	3	92
30-34	81	4	69	4	78
35-39	88	4	77	5	84
40-44	72	4	60	5	67
45-49	72	2	63	3	68
50-54	32	1	27	1	28
55-59	19	0	16	0	18
60-64	7	0	7	0	8
Over 64	9	0	8	0	8
Total	727	23	631	26	706

¹ Riders include drivers and passengers on motorcycles.

Motorcycle Crash Involvements in New Mexico by Class, 1997

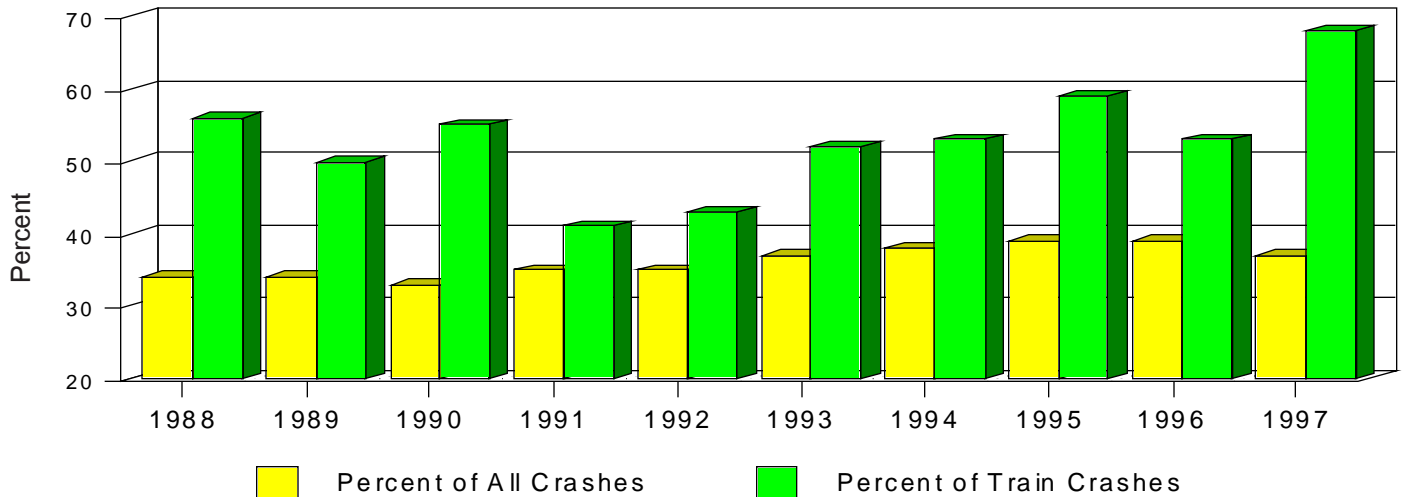
Class	Total	Fatal	Injury	Total
Other Vehicle	413	13	337	
Overturn	172	2	162	
Fixed Object	94	8	78	
Other Non-collision	34	0	33	
Parked Vehicle	22	0	7	
Animal	18	0	16	
Pedestrian	8	0	8	
Other Object	2	0	2	
Total	763	23	643	200 400

All vehicles: see page 17.

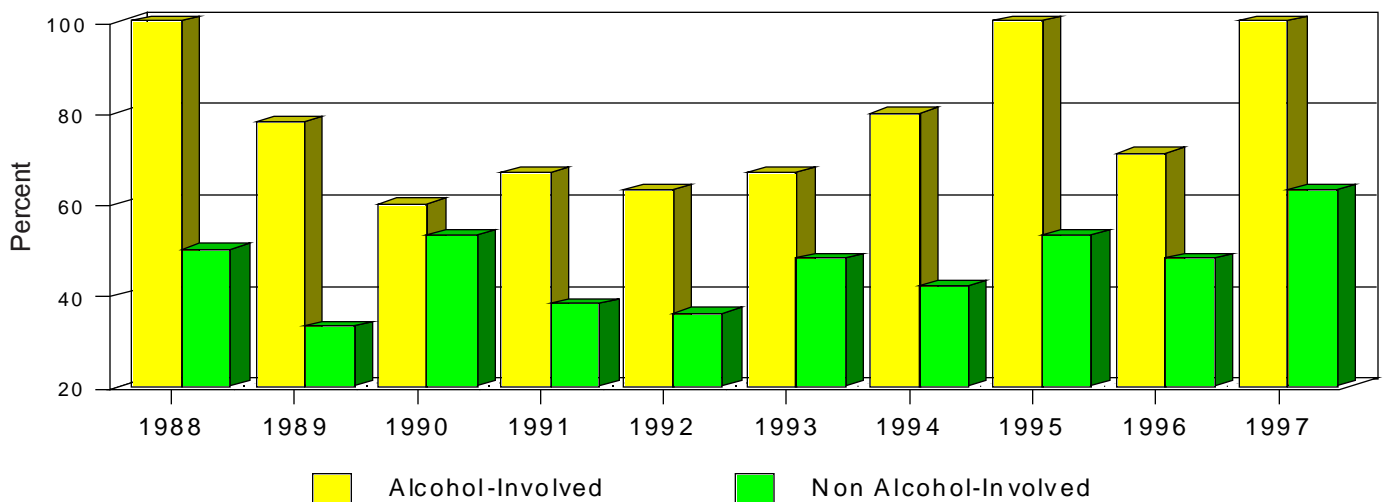
Traffic Crashes Involving Trains by Severity in New Mexico, 1988 - 1997

Year	Crashes				People	
	Total	Fatal	Injury	Property Damage	Killed	Injured
1997	22	4	11	7	5	18
1996	30	4	12	14	8	21
1995	17	4	6	7	4	11
1994	17	2	7	8	2	13
1993	29	3	12	14	4	22
1992	30	1	12	17	1	22
1991	29	3	9	17	3	11
1990	22	1	11	10	1	12
1989	24	6	6	12	7	11
1988	16	2	7	7	2	9

Percent of Crashes Resulting in Fatalities or Injuries by Train Involvement, 1988-1997



Percent of Train Crashes Resulting in Fatalities or Injuries by Alcohol-involvement, 1988-1997



SOURCES

The data sources are:

Crash Files - information from crash reports submitted by the many law enforcement agencies in the state, which are compiled and processed by the Transportation Statistics Bureau and analyzed by the Division of Government Research, UNM.

Licensed Drivers - driver's license data maintained by the Motor Vehicle Division of the New Mexico Taxation and Revenue Department. Counts are current as of July 1997.

Motor Vehicle Registrations - counts are from the Motor Vehicle Division of the New Mexico Taxation and Revenue Department, which are published by the Bureau of Business and Economic Research, UNM (*University of New Mexico, Institute of Applied Research Services, Data Bank, 1997*).

Population - counts are from U.S. Department of Commerce, Bureau of the Census, Population Estimates Branch, December 1997.

Cost Estimates - the cost of crashes in New Mexico is based on Federal Highway Administration estimation formulae (*The Cost of Highway Crashes*, FHWA-RD-91-055, Federal Highway Administration, 1991). These are estimates, not actual dollar amounts. Included are direct costs such as lost wages and medical expenses, and indirect "willingness to pay" estimates of lost quality of life.

Million Vehicle Miles (MVM) - computations are based on the daily average vehicle miles traveled and system mileages by county and functional classification from the Highway Planning and Research Division of the New Mexico State Highway and Transportation Department. In 1988, the Highway Planning and Research Division made changes in its traffic monitoring methodology. These changes mean that discretion must be used in directly comparing previous and current years' MVMs and any rates based on MVMs. Also, the MVM figures for 1997 are estimates for the federal fiscal year of 1997, projected from past years data.

National Death Rates - figures are calculated using fatalities from *the Monthly Traffic Fatality Report*, the National Center for Statistics & Analysis - Research & Development, the National Highway Traffic Safety Administration, the U.S. Department of Transportation, and the population counts from the Census Bureau.

National Crash Rates - The data for the national crash rates are derived from the General Estimates System (GES) which began operation in 1988. Care should be taken when comparing National and New Mexico crash rates because the statistics obtained from the GES are estimates based on a sample of crashes.

Seatbelt - data for seatbelts was prepared by the Division of Epidemiology, Evaluation and Planning of the New Mexico Department of Health (*Occupant Protection Survey State of New Mexico, Department of Health, 1997*).

Age	19-22, 24-27, 31, 34	Minor Injuries	28
Alcohol Involvement/ Alcohol-Involved	1, 23, 25-27, 29-32, 35	Month	5
City	12-15	Motorcycle	33-34
Class	17, 34	Motorcyclists	33-34
Contributing Factors	16	Motor Vehicle Registrations	2, 33, 36
County	10-11, 23, 32	Pedestrians	23-24
Day of Week	5-6, 8, 30	People	21-22
Deaths	3, 20, 23, 25-27, 33	Population	10, 14, 36
Density	15	Pueblos	9
Defects	16	Property Damage Only	1-2, 9-10, 12-13, 18, 29, 35
Drivers	19, 20-22, 31	Rates	1-3, 10-11, 14-15, 19, 23, 36
Economic Loss	10	Residence of Drivers	19
Fatal Crashes	1-2, 5, 7, 9-10, 12-19, 25-27, 29-31, 34-35	Reservations	9
Fatalities	1-2, 4, 7-10, 12-13, 17-18, 20, 23-27, 29, 33-35	Riders	33, 34
Fixed Objects	17	Road Systems	9
Helmet Usage	33-34	Rural	1, 9, 15
Highway	15	Seatbelt	28
Hit and Run	18	Senior Citizens	27
Holidays	7	Severity	2, 25-27, 28, 34-35
Hour(s) of the Day	6, 30-31	Sex	20-22, 24-27, 31
Injured	1-2, 7, 9-10, 12-13, 17-18, 21, 23-27, 29, 34-35	Serious Injuries	20, 28
Injury Crashes	1-2, 7, 9-10, 12-19, 23, 25-29, 34-35	Teenagers	25
Intersections	15	Trains	35
Killed	(see fatalities)	Urban	1, 6, 9
Lighting	18	Vehicle Miles	1-2, 10, 23, 36
Licensed Drivers	10, 36	Vehicle Registrations	2, 33, 36
Local Resident	1	Vehicle Type	16, 25-27
		Weather	18
		Young Adults	26

Services provided by the

DIVISION OF GOVERNMENT RESEARCH
at the
UNIVERSITY OF NEW MEXICO

The Division of Government Research (DGR) provides specialized information processing services and data analysis to a wide range of clients in New Mexico and around the nation. We are happy to have prepared this annual report for the New Mexico Traffic Safety Bureau for the eighteenth year. This report displays a very small fraction of the data and information which are available about traffic crashes and highway conditions in New Mexico. The preparation of this publication entailed the extensive use of computerized files which are maintained by DGR, but owned by the New Mexico State Highway and Transportation Department. Hence, special requests for the use of crash data should be directed to:

The New Mexico Traffic Safety Bureau (505) 827-0427.

DGR has produced a number of traffic and highway safety publications for the Traffic Safety Bureau over our long association. For further information on these products and our specialized services in these and other fields, please contact:

Mr. James Davis, Director - DGR (505) 277-3305.
email: dgrint@unm.edu
web site: <http://www.unm.edu/~dgrint/dgr.html>

ACKNOWLEDGEMENTS

This report was produced by: Brian Bowers, Marsha Kuhnley, Darlene Mayette, and RenaA. Yazzie. Bich-Hanh Nguyen was the project leader and editor.

Printed by University of New Mexico Printing Services

Traffic Fatalities in New Mexico by County, 1997

